

**Anti-Serpin C1/Antithrombin-III Antibody**  
**Catalog # ABO11528****Specification**

---

**Anti-Serpin C1/Antithrombin-III Antibody - Product Information**

Application	WB
Primary Accession	<a href="#">P01008</a>
Host	Rabbit
Reactivity	Human, Mouse, Rat
Clonality	Polyclonal
Format	Lyophilized

**Description**

Rabbit IgG polyclonal antibody for Antithrombin-III(SERPINC1) detection. Tested with WB in Human;Mouse;Rat.

**Reconstitution**

Add 0.2ml of distilled water will yield a concentration of 500ug/ml.

**Anti-Serpin C1/Antithrombin-III Antibody - Additional Information**

**Gene ID** 462

**Other Names**

Antithrombin-III, ATIII, Serpin C1, SERPINC1, AT3

**Calculated MW**

52602 MW KDa

**Application Details**

Western blot, 0.1-0.5 µg/ml, Human, Rat, Mouse<br>

**Subcellular Localization**

Secreted, extracellular space.

**Tissue Specificity**

Found in plasma.

**Protein Name**

Antithrombin-III

**Contents**

Each vial contains 5mg BSA, 0.9mg NaCl, 0.2mg Na<sub>2</sub>HPO<sub>4</sub>, 0.05mg Thimerosal, 0.05mg NaN<sub>3</sub>.

**Immunogen**

A synthetic peptide corresponding to a sequence at the N-terminus of human Antithrombin III(93-107aa TFYQHLADSKNDNDN), different from the related mouse and rat sequences by one amino acid.

**Purification**

Immunogen affinity purified.

**Cross Reactivity**

No cross reactivity with other proteins

**Storage**

**At -20°C for one year. After r°Constitution, at 4°C for one month. It°Can also be aliquotted and stored frozen at -20°C for a longer time.Avoid repeated freezing and thawing.**

**Sequence Similarities**

Belongs to the serpin family.

**Anti-Serpin C1/Antithrombin-III Antibody - Protein Information**

**Name** SERPINC1

**Synonyms** AT3

**Function**

Most important serine protease inhibitor in plasma that regulates the blood coagulation cascade (PubMed:<a href="http://www.uniprot.org/citations/15140129" target="\_blank">15140129</a>, PubMed:<a href="http://www.uniprot.org/citations/15853774" target="\_blank">15853774</a>). AT-III inhibits thrombin, matriptase-3/TMPRSS7, as well as factors IXa, Xa and XIa (PubMed:<a href="http://www.uniprot.org/citations/15140129" target="\_blank">15140129</a>). Its inhibitory activity is greatly enhanced in the presence of heparin.

**Cellular Location**

Secreted, extracellular space.

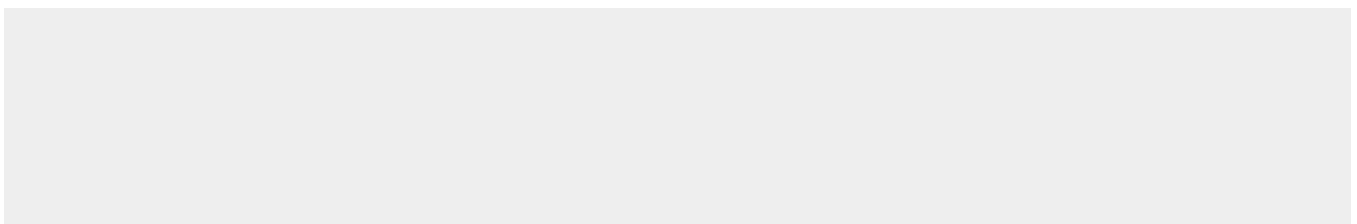
**Tissue Location**

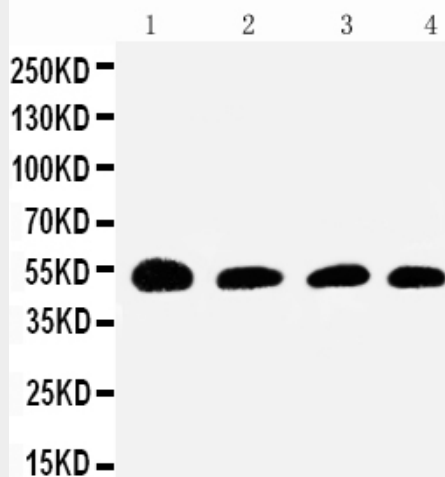
Found in plasma.

**Anti-Serpin C1/Antithrombin-III Antibody - Protocols**

Provided below are standard protocols that you may find useful for product applications.

- [Western Blot](#)
- [Blocking Peptides](#)
- [Dot Blot](#)
- [Immunohistochemistry](#)
- [Immunofluorescence](#)
- [Immunoprecipitation](#)
- [Flow Cytometry](#)
- [Cell Culture](#)

**Anti-Serpin C1/Antithrombin-III Antibody - Images**



Anti-Antithrombin III antibody, ABO11528, Western blotting  
Lane 1: Rat Testis Tissue Lysate  
Lane 2: SMMC Cell Lysate  
Lane 3: JURKAT Cell Lysate  
Lane 4: RAJI Cell Lysate

### Anti-Serpin C1/Antithrombin-III Antibody - Background

Serpin peptidase inhibitor, clade C(antithrombin), member 1, also known as Antithrombin III(AT3) is the most important inhibitor of thrombin OMBIN III and other coagulation proteinases. This gene is mapped to 1q25.1. The protein encoded by this gene is a plasma protease inhibitor and a member of the serpin superfamily. This protein inhibits thrombin as well as other activated serine proteases of the coagulation system, and it regulates the blood coagulation cascade. The protein includes two functional domains: the heparin binding-domain at the N-terminus of the mature protein, and the reactive site domain at the C-terminus. The inhibitory activity is enhanced by the presence of heparin. More than 120 mutations have been identified for this gene, many of which are known to cause antithrombin-III deficiency.