

Anti-Cortisol Binding Globulin Antibody
Catalog # ABO11540**Specification**

Anti-Cortisol Binding Globulin Antibody - Product Information

Application	WB, IHC-P, ICC
Primary Accession	P08185
Host	Rabbit
Reactivity	Human
Clonality	Polyclonal
Format	Lyophilized

Description

Rabbit IgG polyclonal antibody for Corticosteroid-binding globulin(SERPINA6) detection. Tested with WB, IHC-P, ICC in Human.

Reconstitution

Add 0.2ml of distilled water will yield a concentration of 500ug/ml.

Anti-Cortisol Binding Globulin Antibody - Additional Information

Gene ID 866

Other Names

Corticosteroid-binding globulin, CBG, Serpin A6, Transcortin, SERPINA6, CBG

Calculated MW

45141 MW KDa

Application Details

Immunocytochemistry , 0.5-1 µg/ml, Human, -
Immunohistochemistry(Paraffin-embedded Section), 0.5-1 µg/ml, Human, By Heat
Western blot, 0.1-0.5 µg/ml, Human

Subcellular Localization

Secreted.

Tissue Specificity

Plasma; synthesized in liver. Has also been identified in a number of glycocorticoid responsive cells.

Protein Name

Corticosteroid-binding globulin

Contents

Each vial contains 5mg BSA, 0.9mg NaCl, 0.2mg Na₂HPO₄, 0.05mg Thimerosal, 0.05mg NaN₃.

Immunogen

A synthetic peptide corresponding to a sequence at the N-terminus of human Cortisol Binding Globulin(102-120aa ETEIHQGFQHLHQLFAKSD).

Purification

Immunogen affinity purified.

Cross Reactivity

No cross reactivity with other proteins

Storage

At -20°C for one year. After reconstitution, at 4°C for one month. It can also be aliquotted and stored frozen at -20°C for a longer time. Avoid repeated freezing and thawing.

Sequence Similarities

Belongs to the serpin family.

Anti-Cortisol Binding Globulin Antibody - Protein Information

Name SERPINA6

Synonyms CBG

Function

Major transport protein for glucocorticoids and progestins in the blood of almost all vertebrate species.

Cellular Location

Secreted.

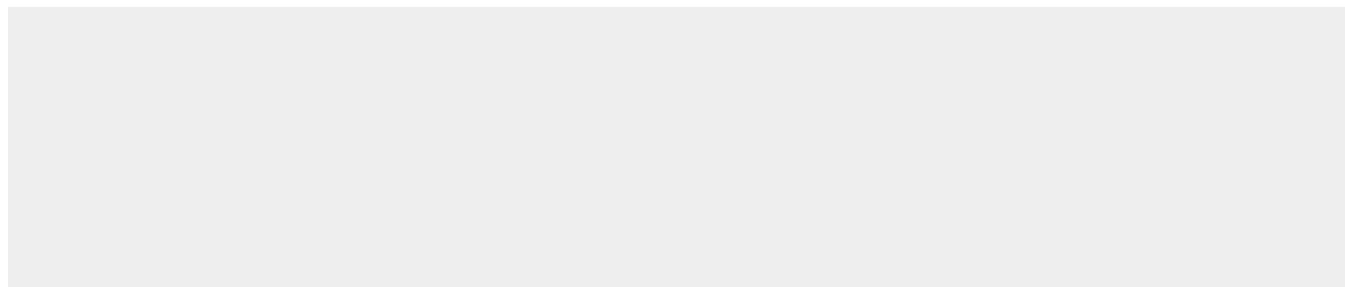
Tissue Location

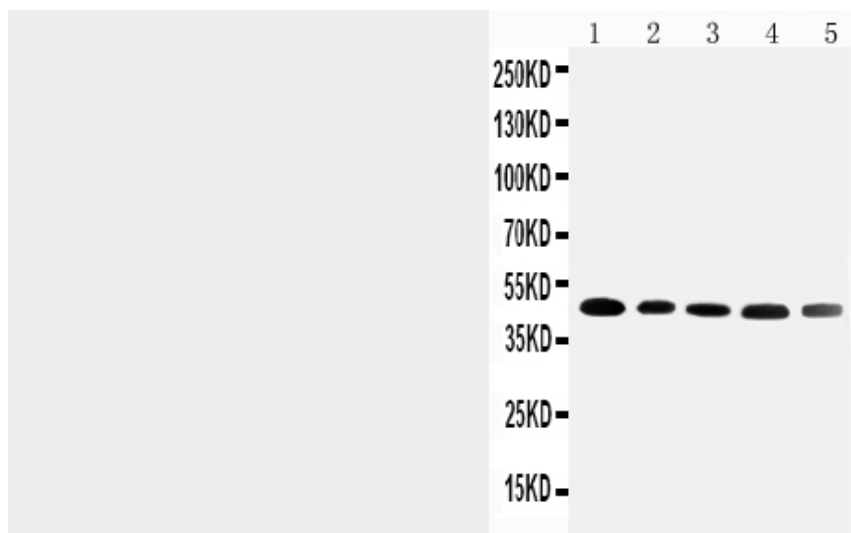
Plasma; synthesized in liver. Has also been identified in a number of glucocorticoid responsive cells

Anti-Cortisol Binding Globulin Antibody - Protocols

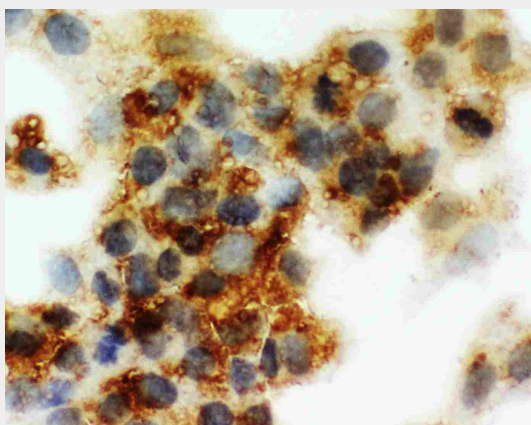
Provided below are standard protocols that you may find useful for product applications.

- [Western Blot](#)
- [Blocking Peptides](#)
- [Dot Blot](#)
- [Immunohistochemistry](#)
- [Immunofluorescence](#)
- [Immunoprecipitation](#)
- [Flow Cytometry](#)
- [Cell Culture](#)

Anti-Cortisol Binding Globulin Antibody - Images



Anti-Cortisol Binding Globulin antibody, ABO11540, Western blotting
Lane 1: HELA Cell Lysate
Lane 2: A431 Cell Lysate
Lane 3: U87 Cell Lysate
Lane 4: 22RV1 Cell Lysate
Lane 5: PANC Cell Lysate



Anti-Cortisol Binding Globulin antibody, ABO11540, ICCICC: HEPG2 Cell

Anti-Cortisol Binding Globulin Antibody - Background

Corticosteroid-binding globulin(CBG), also known as Serpin A6 is a protein that in humans is encoded by the SERPINA6 gene. It is mapped 14q32.13. This gene encodes an alpha-globulin protein with corticosteroid-binding properties. This is the major transport protein for glucocorticoids and progestins in the blood of most vertebrates. The gene localizes to a chromosomal region containing several closely related serine protease inhibitors which may have evolved by duplication events.