

**Anti-AVPR1A Antibody**  
**Catalog # ABO11558****Specification**

---

**Anti-AVPR1A Antibody - Product Information**

Application	WB
Primary Accession	<a href="#">P30560</a>
Host	Rabbit
Reactivity	Human, Mouse, Rat
Clonality	Polyclonal
Format	Lyophilized

**Description**

Rabbit IgG polyclonal antibody for Vasopressin V1a receptor(AVPR1A) detection. Tested with WB in Human;Mouse;Rat.

**Reconstitution**

Add 0.2ml of distilled water will yield a concentration of 500ug/ml.

**Anti-AVPR1A Antibody - Additional Information**

**Gene ID** 25107

**Other Names**

Vasopressin V1a receptor, V1aR, AVPR V1a, Antidiuretic hormone receptor 1a, Vascular/hepatic-type arginine vasopressin receptor, Avpr1a

**Calculated MW**

47655 MW KDa

**Application Details**

Western blot, 0.1-0.5 µg/ml, Human, Rat, Mouse<br>

**Subcellular Localization**

Cell membrane; Multi-pass membrane protein. Cytoplasmic vesicle membrane; Multi-pass membrane protein. Located in cytoplasmic vesicles dispersed throughout the cell cytoplasm and to the plasma membrane.

**Tissue Specificity**

Localized within gonadotropes of the anterior pituitary of the brain. Broadly distributed throughout the cerebral cortex. .

**Protein Name**

Vasopressin V1a receptor

**Contents**

Each vial contains 5mg BSA, 0.9mg NaCl, 0.2mg Na2HPO4, 0.05mg Thimerosal, 0.05mg NaN3.

**Immunogen**

A synthetic peptide corresponding to a sequence in the middle region of rat AVPR1A(155-173aa

HPLKTLQQPARRSRLMIAT), different from the related human and mouse sequences by one amino acid.

**Purification**

Immunogen affinity purified.

**Cross Reactivity**

No cross reactivity with other proteins

**Storage**

**At -20°C for one year. After reconstitution, at 4°C for one month. It can also be aliquotted and stored frozen at -20°C for a longer time. Avoid repeated freezing and thawing.**

**Sequence Similarities**

Belongs to the G-protein coupled receptor 1 family. Vasopressin/oxytocin receptor subfamily.

**Anti-AVPR1A Antibody - Protein Information**

**Name** Avpr1a

**Function**

Receptor for arginine vasopressin. The activity of this receptor is mediated by G proteins which activate a phosphatidyl- inositol-calcium second messenger system. Involved in social memory formation.

**Cellular Location**

Cell membrane; Multi-pass membrane protein. Cytoplasmic vesicle membrane; Multi-pass membrane protein. Note=Located in cytoplasmic vesicles dispersed throughout the cell cytoplasm and to the plasma membrane

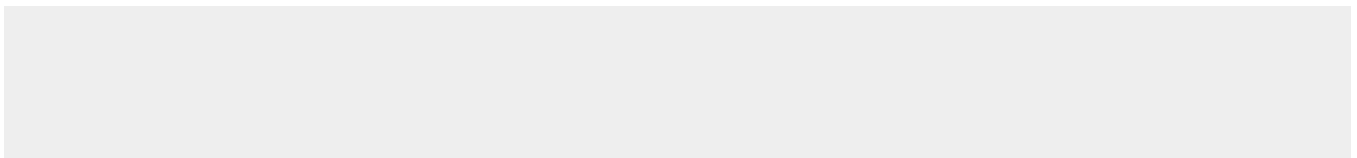
**Tissue Location**

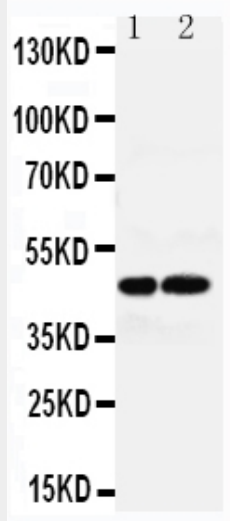
Localized within gonadotropes of the anterior pituitary of the brain. Broadly distributed throughout the cerebral cortex.

**Anti-AVPR1A Antibody - Protocols**

Provided below are standard protocols that you may find useful for product applications.

- [Western Blot](#)
- [Blocking Peptides](#)
- [Dot Blot](#)
- [Immunohistochemistry](#)
- [Immunofluorescence](#)
- [Immunoprecipitation](#)
- [Flow Cytometry](#)
- [Cell Culture](#)

**Anti-AVPR1A Antibody - Images**



Anti-AVPR1A antibody, ABO11558, All Western blotting  
All lanes: Anti-AVPR1A(ABO11558) at 0.5ug/ml  
Lane 1: Rat Liver Tissue Lysate at 40ug  
Lane 2: Rat Kidney Tissue Lysate at 40ug  
Predicted bind size: 47KD  
Observed bind size: 47KD

#### **Anti-AVPR1A Antibody - Background**

Arginine vasopressin receptor 1A(officially called AVPR1A) is one of the three major receptor types for arginine vasopressin (AVPR1B and AVPR2 being the others). It belongs to the subfamily of G-protein coupled receptors which includes AVPR1B, V2R and OXT receptors. This gene is mapped to 12q14.2. AVPR1A is present throughout the brain, as well as in the periphery, in the liver, kidney, and vasculature. The protein encoded by this gene acts as receptor for arginine vasopressin. Its activity is mediated by G proteins which stimulate a phosphatidylinositol-calcium second messenger system. The receptor mediates cell contraction and proliferation, platelet aggregation, release of coagulation factor and glycogenolysis.