

Anti-Reticulon 1 Antibody
Catalog # ABO11565**Specification**

Anti-Reticulon 1 Antibody - Product Information

Application	WB
Primary Accession	Q16799
Host	Rabbit
Reactivity	Human, Mouse, Rat
Clonality	Polyclonal
Format	Lyophilized

Description

Rabbit IgG polyclonal antibody for Reticulon-1(RTN1) detection. Tested with WB in Human;Mouse;Rat.

Reconstitution

Add 0.2ml of distilled water will yield a concentration of 500ug/ml.

Anti-Reticulon 1 Antibody - Additional Information

Gene ID 6252

Other Names

Reticulon-1, Neuroendocrine-specific protein, RTN1, NSP

Calculated MW

83618 MW KDa

Application Details

Western blot, 0.1-0.5 µg/ml, Rat, Human, Mouse

Subcellular Localization

Endoplasmic reticulum membrane; Multi-pass membrane protein.

Tissue Specificity

Expressed in neural and neuroendocrine tissues and cell cultures derived therefrom. Expression of isoform RTN1-C is strongly correlated with neuronal differentiation. .

Protein Name

Reticulon-1

Contents

Each vial contains 5mg BSA, 0.9mg NaCl, 0.2mg Na₂HPO₄, 0.05mg Thimerosal, 0.05mg NaN₃.

Immunogen

A synthetic peptide corresponding to a sequence at the N-terminus of human Reticulon 1(121-136aa TYFTGILQKENGHVTI), different from the related mouse and rat sequences by three amino acids.

Purification

Immunogen affinity purified.

Cross Reactivity

No cross reactivity with other proteins

Storage

At -20°C for one year. After reconstitution, at 4°C for one month. It can also be aliquotted and stored frozen at -20°C for a longer time. Avoid repeated freezing and thawing.

Anti-Reticulon 1 Antibody - Protein Information

Name RTN1

Synonyms NSP

Function

Inhibits amyloid precursor protein processing, probably by blocking BACE1 activity.

Cellular Location

Endoplasmic reticulum membrane; Multi-pass membrane protein. Golgi apparatus membrane; Multi-pass membrane protein

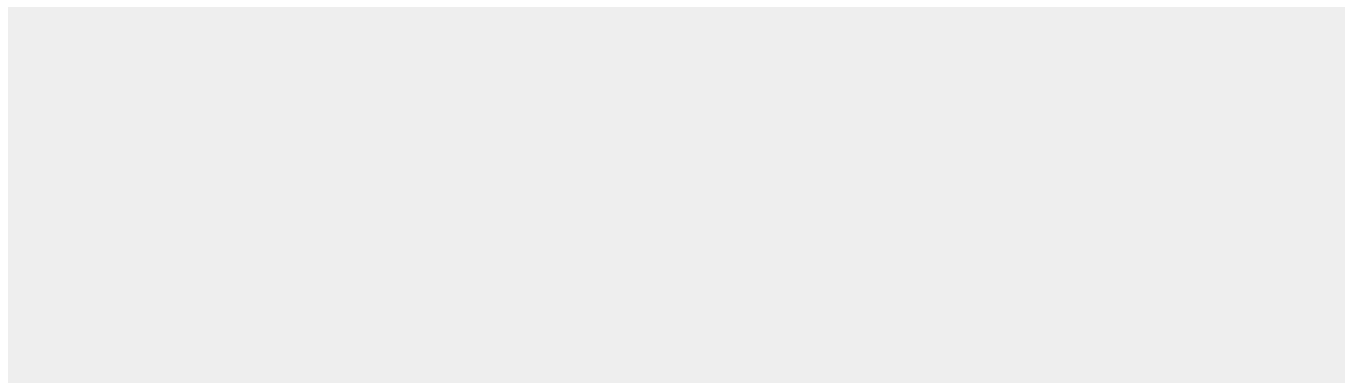
Tissue Location

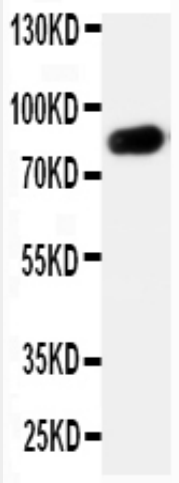
Expressed in neural and neuroendocrine tissues and cell cultures derived therefrom. Expression of isoform RTN1-C is strongly correlated with neuronal differentiation

Anti-Reticulon 1 Antibody - Protocols

Provided below are standard protocols that you may find useful for product applications.

- [Western Blot](#)
- [Blocking Peptides](#)
- [Dot Blot](#)
- [Immunohistochemistry](#)
- [Immunofluorescence](#)
- [Immunoprecipitation](#)
- [Flow Cytometry](#)
- [Cell Culture](#)

Anti-Reticulon 1 Antibody - Images



Anti-Reticulon 1 antibody, ABO11565, All Western blotting
All lanes: Anti-RTN1(ABO11565) at 0.5ug/ml
Lane 1: Rat Lung Tissue Lysate at 40ug
Predicted bind size: 84KD
Observed bind size: 84KD

Anti-Reticulon 1 Antibody - Background

Reticulon-1, also called RTN1 or NSP, is a protein that in humans is encoded by the RTN1 gene. It is mapped to 14q23.1. This gene belongs to the family of reticulon-encoding genes. Reticulons are associated with the endoplasmic reticulum, and are involved in neuroendocrine secretion or in membrane trafficking in neuroendocrine cells. RTN1 has been shown to interact with BCL2-like 1, UGCG and spastin which is mutated in hereditary spastic paraplegia-4.