

Anti-EPB41L1 Antibody
Catalog # ABO11575**Specification**

Anti-EPB41L1 Antibody - Product Information

Application	WB
Primary Accession	Q9H4G0
Host	Rabbit
Reactivity	Human, Mouse, Rat
Clonality	Polyclonal
Format	Lyophilized

Description

Rabbit IgG polyclonal antibody for Band 4.1-like protein 1(EPB41L1) detection. Tested with WB in Human;Mouse;Rat.

Reconstitution

Add 0.2ml of distilled water will yield a concentration of 500ug/ml.

Anti-EPB41L1 Antibody - Additional Information

Gene ID 2036

Other Names

Band 4.1-like protein 1, Neuronal protein 4.1, 4.1N, EPB41L1, KIAA0338

Calculated MW

98503 MW KDa

Application Details

Western blot, 0.1-0.5 µg/ml, Mouse, Rat, Human

Subcellular Localization

Cytoplasm, cytoskeleton.

Tissue Specificity

Highest expression in brain, lower in heart, kidney, pancreas, placenta, lung and skeletal muscle.

Protein Name

Band 4.1-like protein 1

Contents

Each vial contains 5mg BSA, 0.9mg NaCl, 0.2mg Na₂HPO₄, 0.05mg Thimerosal, 0.05mg NaN₃.

Immunogen

A synthetic peptide corresponding to a sequence at the C-terminus of human EPB41L1(585-604aa QDQERDTVFLKDNHLAIERK), different from the related mouse and rat sequences by one amino acid.

Purification

Immunogen affinity purified.

Cross Reactivity

No cross reactivity with other proteins

Storage

At -20°C for one year. After reconstitution, at 4°C for one month. It can also be aliquotted and stored frozen at -20°C for a longer time. Avoid repeated freezing and thawing.

Sequence Similarities

Contains 1 FERM domain.

Anti-EPB41L1 Antibody - Protein Information

Name EPB41L1 ([HGNC:3378](#))

Function

May function to confer stability and plasticity to neuronal membrane via multiple interactions, including the spectrin-actin-based cytoskeleton, integral membrane channels and membrane-associated guanylate kinases.

Cellular Location

Cytoplasm, cytoskeleton.

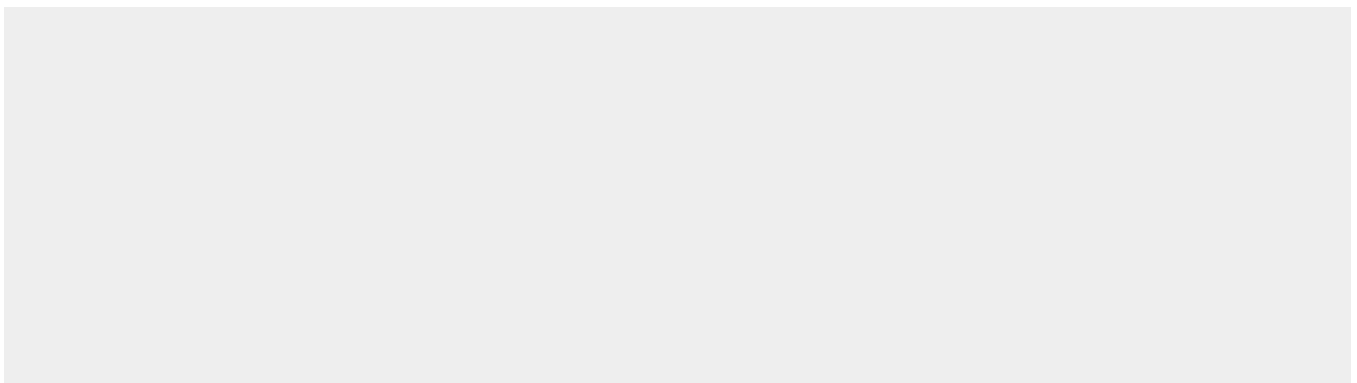
Tissue Location

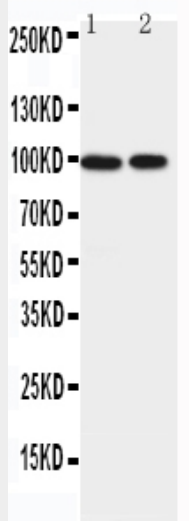
Highest expression in brain, lower in heart, kidney, pancreas, placenta, lung and skeletal muscle

Anti-EPB41L1 Antibody - Protocols

Provided below are standard protocols that you may find useful for product applications.

- [Western Blot](#)
- [Blocking Peptides](#)
- [Dot Blot](#)
- [Immunohistochemistry](#)
- [Immunofluorescence](#)
- [Immunoprecipitation](#)
- [Flow Cytometry](#)
- [Cell Culture](#)

Anti-EPB41L1 Antibody - Images



Anti-EPB41L1 antibody, ABO11575, All Western blotting All lanes: Anti-EPB41L1 (ABO11575) at 0.5ug/ml Lane 1: Rat Brain Tissue Lysate at 40ug Lane 2: Mouse Brain Tissue Lysate at 40ug Predicted bind size: 99KD Observed bind size: 99KD

Anti-EPB41L1 Antibody - Background

Band 4.1-like protein 1 is a protein that in humans is encoded by the EPB41L1 gene. This gene is mapped to 20q11.23. It is found that a heterozygous missense mutation in the EPB41L1 gene causing nonsyndromic intellectual disability. This gene may function to confer stability and plasticity to neuronal membrane via multiple interactions, including the spectrin-actin-based cytoskeleton, integral membrane channels and membrane-associated guanylate kinases. EPB41L1 has been shown to interact with ITPR1, Dopamine receptor D2, Dopamine receptor D3, CENTG1 and Nuclear mitotic apparatus protein 1.