

Anti-HNF1 Beta Antibody
Catalog # ABO11576**Specification**

Anti-HNF1 Beta Antibody - Product Information

Application	WB
Primary Accession	P35680
Host	Rabbit
Reactivity	Human, Mouse, Rat
Clonality	Polyclonal
Format	Lyophilized

Description

Rabbit IgG polyclonal antibody for Hepatocyte nuclear factor 1-beta(HNF1B) detection. Tested with Adiponectin in Human;Mouse;Rat.

Reconstitution

Add 0.2ml of distilled water will yield a concentration of 500ug/ml.

Anti-HNF1 Beta Antibody - Additional Information

Gene ID 6928

Other Names

Hepatocyte nuclear factor 1-beta, HNF-1-beta, HNF-1B, Homeoprotein LFB3, Transcription factor 2, TCF-2, Variant hepatic nuclear factor 1, vHNF1, HNF1B, TCF2

Calculated MW

61324 MW KDa

Application Details

Immunohistochemistry(Paraffin-embedded Section), 0.5-1 µg/ml, Mouse, Human, Rat, By Heat
Western blot, 0.1-0.5 µg/ml, Mouse, Human, Rat

Subcellular Localization

Nucleus.

Protein Name

Hepatocyte nuclear factor 1-beta

Contents

Each vial contains 5mg BSA, 0.9mg NaCl, 0.2mg Na₂HPO₄, 0.05mg Thimerosal, 0.05mg NaN₃.

Immunogen

A synthetic peptide corresponding to a sequence at the C-terminus of human HNF1 beta(494-509aa HMAQQPFMAAVTQLQN), identical to the related mouse and rat sequences.

Purification

Immunogen affinity purified.

Cross Reactivity

No cross reactivity with other proteins

Storage

At -20°C for one year. After reconstitution, at 4°C for one month. It can also be aliquotted and stored frozen at -20°C for a longer time. Avoid repeated freezing and thawing.

Sequence Similarities

Belongs to the HNF1 homeobox family.

Anti-HNF1 Beta Antibody - Protein Information

Name HNF1B

Synonyms TCF2

Function

Transcription factor that binds to the inverted palindrome 5'-GTTAATNATTAAC-3' (PubMed: [7900999](http://www.uniprot.org/citations/7900999), PubMed: [17924661](http://www.uniprot.org/citations/17924661)). Binds to the FPC element in the cAMP regulatory unit of the PLAU gene (By similarity). Transcriptional activity is increased by coactivator PCBD1 (PubMed: [24204001](http://www.uniprot.org/citations/24204001)).

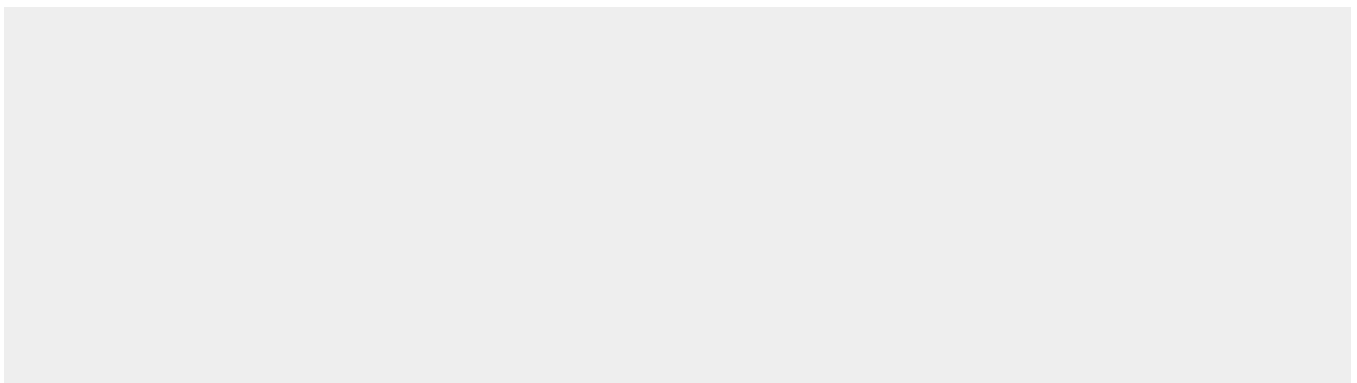
Cellular Location

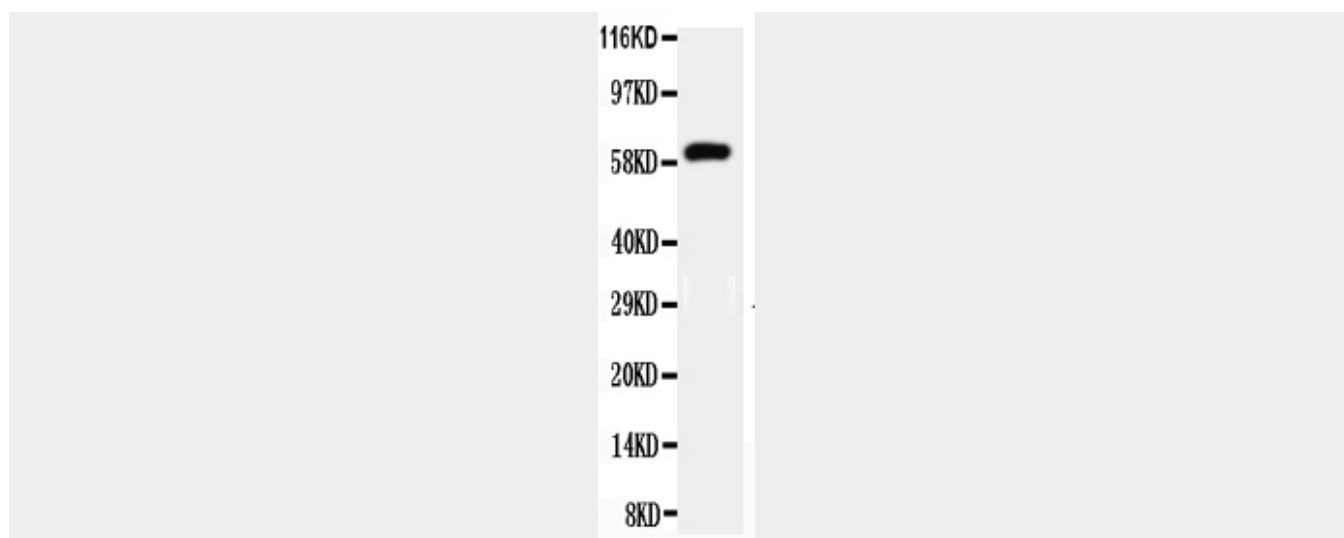
Nucleus.

Anti-HNF1 Beta Antibody - Protocols

Provided below are standard protocols that you may find useful for product applications.

- [Western Blot](#)
- [Blocking Peptides](#)
- [Dot Blot](#)
- [Immunohistochemistry](#)
- [Immunofluorescence](#)
- [Immunoprecipitation](#)
- [Flow Cytometry](#)
- [Cell Culture](#)

Anti-HNF1 Beta Antibody - Images



Anti-HNF1 beta antibody, ABO11576, All Western blottingAll lanes: Anti-HNF1B(ABO11576) at 0.5ug/mlLane 1: Mouse Liver Tissue Lysate at 40ugPredicted bind size: 61KDObserved bind size: 61KD

Anti-HNF1 Beta Antibody - Background

HNF1 homeobox B(hepatocyte nuclear factor 1 homeobox B), also known as HNF1B or transcription factor 2(TCF2), is a human gene. It is a member of the homeodomain-containing superfamily of transcription factors. This gene is mapped to 17q12. The HNF1B protein is believed to form heterodimers with another liver-specific member of this transcription factor family, TCF1. HNF1B functions as both a classic transcriptional activator and as a bookmarking factor that marks target genes for rapid transcriptional reactivation after mitosis. HNF1B also can regulate renal tubulogenesis by controlling expression of SOC3. Mutation of HNF1B that disrupts normal function has been identified as the cause of MODY5(Maturity-Onset of Diabetes, Type 5).