

**Anti-Rab3C Antibody**  
**Catalog # ABO11588****Specification**

---

**Anti-Rab3C Antibody - Product Information**

Application	WB
Primary Accession	<a href="#">Q96E17</a>
Host	Rabbit
Reactivity	Human, Mouse, Rat
Clonality	Polyclonal
Format	Lyophilized

**Description**

Rabbit IgG polyclonal antibody for Ras-related protein Rab-3C(RAB3C) detection. Tested with WB in Human;Mouse;Rat.

**Reconstitution**

Add 0.2ml of distilled water will yield a concentration of 500ug/ml.

**Anti-Rab3C Antibody - Additional Information**

**Gene ID** 115827

**Other Names**

Ras-related protein Rab-3C, RAB3C

**Calculated MW**

25952 MW KDa

**Application Details**

Western blot, 0.1-0.5 µg/ml, Human, Rat, Mouse<br>

**Subcellular Localization**

Cell membrane ; Lipid-anchor ; Cytoplasmic side .

**Tissue Specificity**

Expressed in brain, placenta and lung. .

**Protein Name**

Ras-related protein Rab-3C

**Contents**

Each vial contains 5mg BSA, 0.9mg NaCl, 0.2mg Na<sub>2</sub>HPO<sub>4</sub>, 0.05mg Thimerosal, 0.05mg NaN<sub>3</sub>.

**Immunogen**

A synthetic peptide corresponding to a sequence at the C-terminus of human Rab3C(204-217aa AITAAKQNTRLKET), different from the related mouse and rat sequences by one amino acid.

**Purification**

Immunogen affinity purified.

**Cross Reactivity**

No cross reactivity with other proteins

**Storage**

At -20°C for one year. After reconstitution, at 4°C for one month. It can also be aliquotted and stored frozen at -20°C for a longer time. Avoid repeated freezing and thawing.

**Anti-Rab3C Antibody - Protein Information**

**Name** RAB3C

**Function**

Protein transport. Probably involved in vesicular traffic (By similarity).

**Cellular Location**

Cell membrane; Lipid-anchor; Cytoplasmic side

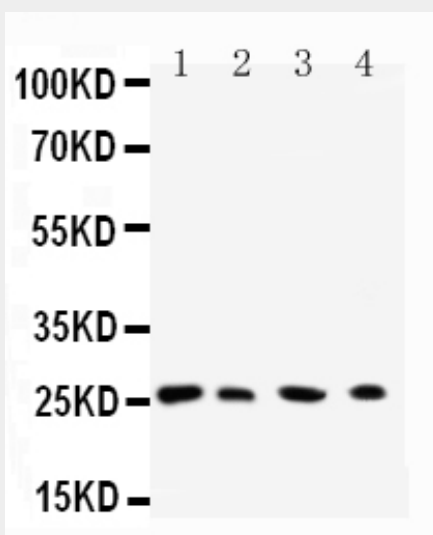
**Tissue Location**

Expressed in brain, placenta and lung.

**Anti-Rab3C Antibody - Protocols**

Provided below are standard protocols that you may find useful for product applications.

- [Western Blot](#)
- [Blocking Peptides](#)
- [Dot Blot](#)
- [Immunohistochemistry](#)
- [Immunofluorescence](#)
- [Immunoprecipitation](#)
- [Flow Cytometry](#)
- [Cell Culture](#)

**Anti-Rab3C Antibody - Images**

Anti-Rab3C antibody, ABO11588, All Western blottingAll lanes: Anti-RAB3C(ABO11588) at 0.5ug/mlLane 1: Rat Brain Tissue Lysate at 40ugLane 2: HELA Whole Cell Lysate at 40ugLane 3: 293T Whole Cell Lysate at 40ugLane 4: COLO320 Whole Cell Lysate at 40ugPredicted bind size: 26KDObserved bind size: 26KD

#### **Anti-Rab3C Antibody - Background**

Ras-related protein Rab-3C is a protein that in humans is encoded by the RAB3C gene. It is mapped to 5q11.2. RAB3C is found in brain, adrenal gland and pituitary. This gene is one of the small GTPases implicated in the regulation of vesicular trafficking between membrane compartments. RAB3C gene contains 6 exons and spans more than 310 kb. The function of this gene is transporting protein, and probably involved in vesicular traffic. RAB3C can interact with RIMS2, RPH3A and RPH3AL.