

Anti-complement C5a Antibody
Catalog # ABO11616**Specification**

Anti-complement C5a Antibody - Product Information

Application	WB, IHC-P
Primary Accession	P08650
Host	Rabbit
Reactivity	Mouse, Rat
Clonality	Polyclonal
Format	Lyophilized

Description

Rabbit IgG polyclonal antibody for Complement C5(C5) detection. Tested with WB, IHC-P in Mouse;Rat.

Reconstitution

Add 0.2ml of distilled water will yield a concentration of 500ug/ml.

Anti-complement C5a Antibody - Additional Information**Other Names**

Complement C5, C5a anaphylatoxin, C5

Calculated MW

8981 MW KDa

Application Details

Immunohistochemistry(Paraffin-embedded Section), 0.5-1 µg/ml, Mouse, Rat, By Heat
Western blot, 0.1-0.5 µg/ml, Mouse, Rat

Subcellular Localization

Secreted.

Protein Name

Complement C5

Contents

Each vial contains 5mg BSA, 0.9mg NaCl, 0.2mg Na₂HPO₄, 0.05mg Thimerosal, 0.05mg NaN₃.

Immunogen

A synthetic peptide corresponding to a sequence at the N-terminus of rat C5a(1-18aa DLQLLHQKVVEEQAAYKH), different from the related mouse sequence by four amino acids.

Purification

Immunogen affinity purified.

Cross Reactivity

No cross reactivity with other proteins

Storage

At -20°C for one year. After reconstitution, at 4°C for one month. It can also be aliquotted and stored frozen at -20°C for a longer time. Avoid repeated freezing and thawing.

Anti-complement C5a Antibody - Protein Information**Name** C5**Function**

Precursor of the C5a anaphylatoxin and complement C5b components of the complement pathways, which consist in a cascade of proteins that leads to phagocytosis and breakdown of pathogens and signaling that strengthens the adaptive immune system. Activated downstream of classical, alternative, lectin and GZMK complement pathways.

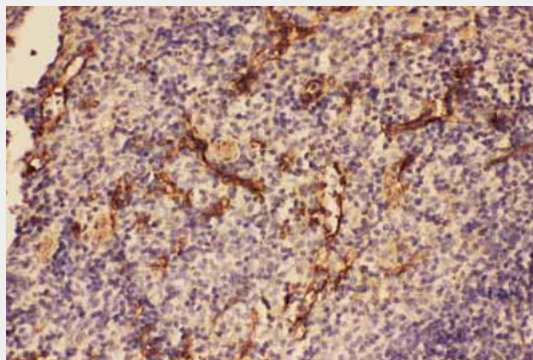
Cellular Location

Secreted. [C5a anaphylatoxin]: Secreted {ECO:0000250|UniProtKB:P01031}

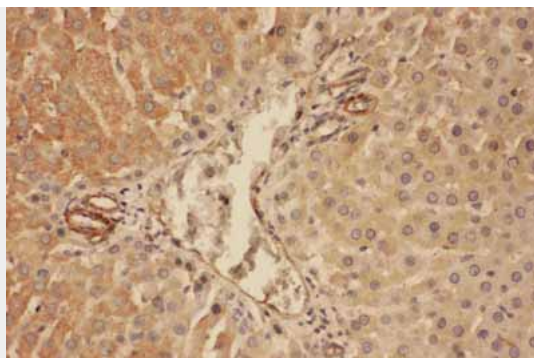
Anti-complement C5a Antibody - Protocols

Provided below are standard protocols that you may find useful for product applications.

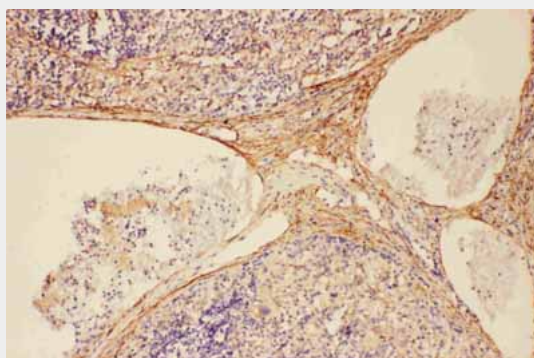
- [Western Blot](#)
- [Blocking Peptides](#)
- [Dot Blot](#)
- [Immunohistochemistry](#)
- [Immunofluorescence](#)
- [Immunoprecipitation](#)
- [Flow Cytometry](#)
- [Cell Culture](#)

Anti-complement C5a Antibody - Images

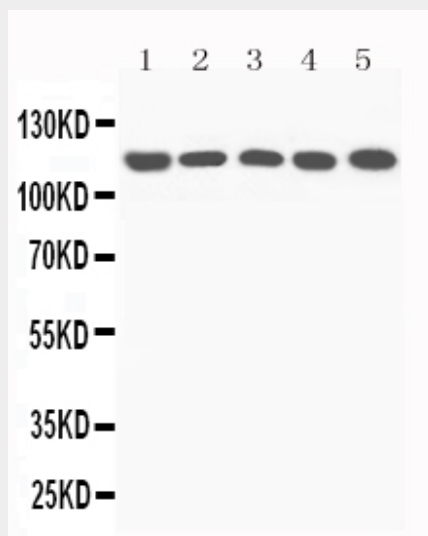
Anti-C5/C5a antibody, ABO11616, IHC(P)IHC(P): Mouse Spleen Tissue



Anti-C5/C5a antibody, ABO11616, IHC(P)IHC(P): Rat Liver Tissue



Anti-C5/C5a antibody, ABO11616, IHC(P)IHC(P): Rat Spleen Tissue



Anti-C5/C5a antibody, ABO11616, All Western blottingAll lanes: Anti-C5a(ABO11616) at 0.5ug/mlLane 1: Rat Liver Tissue Lysate at 40ugLane 2: Mouse Liver Tissue Lysate at 40ugLane 3: NIH Whole Cell Lysate at 40ugLane 4: HEPA Whole Cell Lysate at 40ugLane 5: PC12 Whole Cell Lysate at 40ugPredicted bind size: 115KDObserved bind size: 115KD

Anti-complement C5a Antibody - Background

C5a is a protein fragment released from complement component C5. This gene is mapped to 9q33.2. The protein encoded by this gene is the fifth component of complement, which plays an important role in inflammatory and cell killing processes. This protein is comprised of alpha and beta polypeptide chains that are linked by a disulfide bridge. An activation peptide, C5a, which is an anaphylatoxin that possesses potent spasmogenic and chemotactic activity, is derived from the alpha polypeptide via cleavage with a convertase. The C5b macromolecular cleavage product can

form a complex with the C6 complement component, and this complex is the basis for formation of the membrane attack complex, which includes additional complement components. Mutations in this gene cause complement component 5 deficiency, a disease where patients show a propensity for severe recurrent infections. Defects in this gene have also been linked to susceptibility to liver fibrosis and to rheumatoid arthritis.