

Anti-complement C5a Antibody
Catalog # ABO11617**Specification**

Anti-complement C5a Antibody - Product Information

Application	WB
Primary Accession	P08650
Host	Rabbit
Reactivity	Rat
Clonality	Polyclonal
Format	Lyophilized

Description

Rabbit IgG polyclonal antibody for Complement C5(C5) detection. Tested with WB in Rat.

Reconstitution

Add 0.2ml of distilled water will yield a concentration of 500ug/ml.

Anti-complement C5a Antibody - Additional Information**Other Names**

Complement C5, C5a anaphylatoxin, C5

Calculated MW

8981 MW KDa

Application Details

Western blot, 0.1-0.5 µg/ml, Rat

Subcellular Localization

Secreted.

Protein Name

Complement C5

Contents

Each vial contains 5mg BSA, 0.9mg NaCl, 0.2mg Na₂HPO₄, 0.05mg Thimerosal, 0.05mg NaN₃.

Immunogen

A synthetic peptide corresponding to a sequence at the C-terminus of rat C5a(59-77aa TIADKIRKESHHKGMLLGR), different from the related mouse sequence by five amino acids.

Purification

Immunogen affinity purified.

Cross Reactivity

No cross reactivity with other proteins

Storage

**At -20°C for one year. After r°Constitution,
at 4°C for one month. It°Can also be**

aliquotted and stored frozen at -20°C for a longer time. Avoid repeated freezing and thawing.

Anti-complement C5a Antibody - Protein Information

Name C5

Function

Activation of C5 by a C5 convertase initiates the spontaneous assembly of the late complement components, C5-C9, into the membrane attack complex. C5b has a transient binding site for C6. The C5b-C6 complex is the foundation upon which the lytic complex is assembled.

Cellular Location

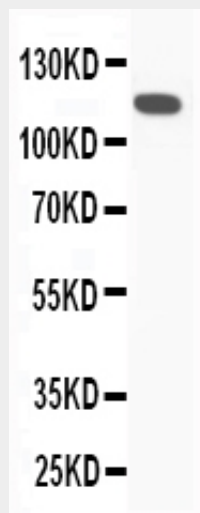
Secreted.

Anti-complement C5a Antibody - Protocols

Provided below are standard protocols that you may find useful for product applications.

- [Western Blot](#)
- [Blocking Peptides](#)
- [Dot Blot](#)
- [Immunohistochemistry](#)
- [Immunofluorescence](#)
- [Immunoprecipitation](#)
- [Flow Cytometry](#)
- [Cell Culture](#)

Anti-complement C5a Antibody - Images



Anti-C5/C5a antibody, ABO11617, All Western blottingAll lanes: Anti-C5a(ABO11617) at 0.5ug/mlWB: Rat Liver Tissue Lysate at 40ugPredicted bind size: 115KDObserved bind size: 115KD

Anti-complement C5a Antibody - Background

C5a is a protein fragment released from complement component C5. This gene is mapped to

9q33.2. The protein encoded by this gene is the fifth component of complement, which plays an important role in inflammatory and cell killing processes. This protein is comprised of alpha and beta polypeptide chains that are linked by a disulfide bridge. An activation peptide, C5a, which is an anaphylatoxin that possesses potent spasmogenic and chemotactic activity, is derived from the alpha polypeptide via cleavage with a convertase. The C5b macromolecular cleavage product can form a complex with the C6 complement component, and this complex is the basis for formation of the membrane attack complex, which includes additional complement components. Mutations in this gene cause complement component 5 deficiency, a disease where patients show a propensity for severe recurrent infections. Defects in this gene have also been linked to susceptibility to liver fibrosis and to rheumatoid arthritis.