

Anti-ALDH1B1 Picoband Antibody
Catalog # ABO11655**Specification**

Anti-ALDH1B1 Picoband Antibody - Product Information

Application	WB
Primary Accession	P30837
Host	Rabbit
Reactivity	Human, Mouse, Rat
Clonality	Polyclonal
Format	Lyophilized

Description

Rabbit IgG polyclonal antibody for Aldehyde dehydrogenase X, mitochondrial(ALDH1B1) detection. Tested with WB in Human;Mouse;Rat.

Reconstitution

Add 0.2ml of distilled water will yield a concentration of 500ug/ml.

Anti-ALDH1B1 Picoband Antibody - Additional Information

Gene ID 219

Other Names

Aldehyde dehydrogenase X, mitochondrial, 1.2.1.3, Aldehyde dehydrogenase 5, Aldehyde dehydrogenase family 1 member B1, ALDH1B1, ALDH5, ALDHX

Calculated MW

57206 MW KDa

Application Details

Western blot, 0.1-0.5 µg/ml, Human, Mouse, Rat

Subcellular Localization

Mitochondrion matrix.

Tissue Specificity

Liver, testis and to a lesser extent in brain.

Protein Name

Aldehyde dehydrogenase X, mitochondrial

Contents

Each vial contains 5mg BSA, 0.9mg NaCl, 0.2mg Na₂HPO₄, 0.05mg NaN₃.

Immunogen

A synthetic peptide corresponding to a sequence at the N-terminus of human ALDH1B1 (116-156aa RYVLASLETLDNGKPFQESYALDLDEVIKVYRYFAGWADK W), different from the related mouse sequence by one amino acid, and from the related rat sequence by two amino acids.

Purification

Immunogen affinity purified.

Cross Reactivity

No cross reactivity with other proteins.

Storage

At -20°C for one year. After reconstitution, at 4°C for one month. It can also be aliquotted and stored frozen at -20°C for a longer time. Avoid repeated freezing and thawing.

Anti-ALDH1B1 Picoband Antibody - Protein Information

Name ALDH1B1

Synonyms ALDH5, ALDHX

Function

ALDHs play a major role in the detoxification of alcohol- derived acetaldehyde. They are involved in the metabolism of corticosteroids, biogenic amines, neurotransmitters, and lipid peroxidation.

Cellular Location

Mitochondrion matrix.

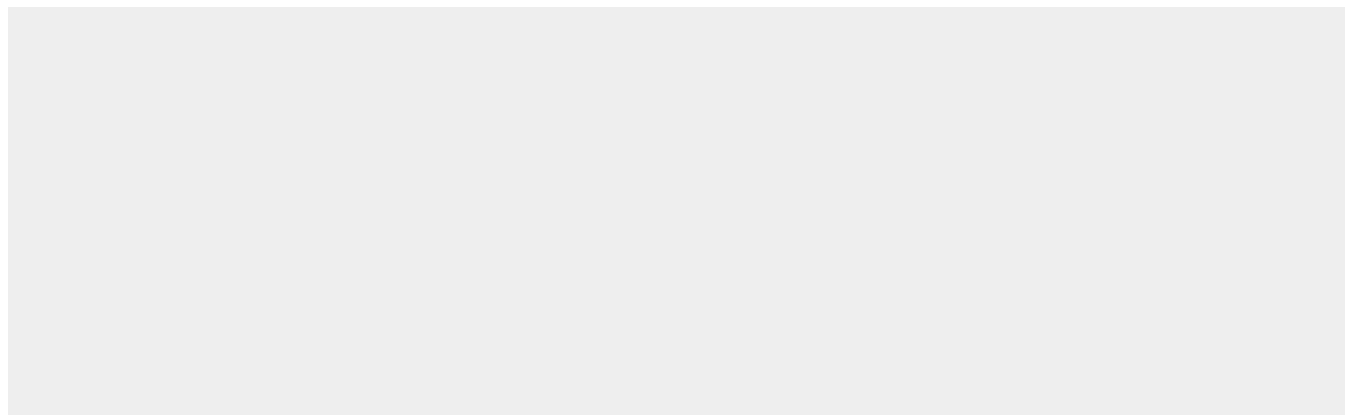
Tissue Location

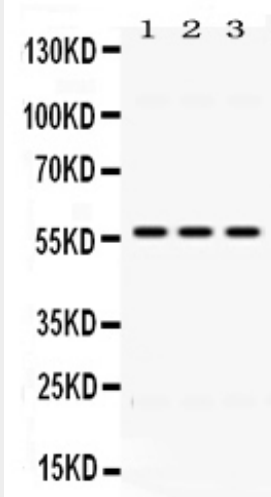
Liver, testis and to a lesser extent in brain.

Anti-ALDH1B1 Picoband Antibody - Protocols

Provided below are standard protocols that you may find useful for product applications.

- [Western Blot](#)
- [Blocking Peptides](#)
- [Dot Blot](#)
- [Immunohistochemistry](#)
- [Immunofluorescence](#)
- [Immunoprecipitation](#)
- [Flow Cytometry](#)
- [Cell Culture](#)

Anti-ALDH1B1 Picoband Antibody - Images



Western blot analysis of ALDH1B1 expression in rat liver extract (lane 1), mouse liver extract (lane 2) and HELA whole cell lysates (lane 3). ALDH1B1 at 57KD was detected using rabbit anti-ALDH1B1 Antigen Affinity purified polyclonal antibody (Catalog # ABO11655) at 0.5 µg/mL. The blot was developed using chemiluminescence (ECL) method .

Anti-ALDH1B1 Picoband Antibody - Background

Aldehyde dehydrogenase X, mitochondrial is an enzyme that in humans is encoded by the ALDH1B1 gene. This protein belongs to the aldehyde dehydrogenases family of proteins. Aldehyde dehydrogenase is the second enzyme of the major oxidative pathway of alcohol metabolism. This gene does not contain introns in the coding sequence. The variation of this locus may affect the development of alcohol-related problems.