

Anti-RPL19 Picoband Antibody
Catalog # ABO11710**Specification**

Anti-RPL19 Picoband Antibody - Product Information

Application	WB
Primary Accession	P84098
Host	Rabbit
Reactivity	Human, Mouse, Rat
Clonality	Polyclonal
Format	Lyophilized

Description

Rabbit IgG polyclonal antibody for 60S ribosomal protein L19(RPL19) detection. Tested with WB in Human;Mouse;Rat.

Reconstitution

Add 0.2ml of distilled water will yield a concentration of 500ug/ml.

Anti-RPL19 Picoband Antibody - Additional Information

Gene ID 6143

Other Names

60S ribosomal protein L19, RPL19

Calculated MW

23466 MW KDa

Application Details

Western blot, 0.1-0.5 µg/ml, Human, Mouse, Rat

Protein Name

60S ribosomal protein L19

Contents

Each vial contains 5mg BSA, 0.9mg NaCl, 0.2mg Na₂HPO₄, 0.05mg NaN₃.

Immunogen

A synthetic peptide corresponding to a sequence at the C-terminus of human RPL19 (132-170aa FKNKRILMEHIHKLKADKARKLLADQAEARRSKTKEAR), identical to the related mouse and rat sequences.

Purification

Immunogen affinity purified.

Cross Reactivity

No cross reactivity with other proteins.

Storage

At -20°C for one year. After r°Constitution,

at 4°C for one month. It can also be aliquotted and stored frozen at -20°C for a longer time. Avoid repeated freezing and thawing.

Anti-RPL19 Picoband Antibody - Protein Information

Name RPL19

Function

Component of the large ribosomal subunit (PubMed: [23636399](http://www.uniprot.org/citations/23636399), PubMed: [32669547](http://www.uniprot.org/citations/32669547)). The ribosome is a large ribonucleoprotein complex responsible for the synthesis of proteins in the cell (PubMed: [23636399](http://www.uniprot.org/citations/23636399), PubMed: [32669547](http://www.uniprot.org/citations/32669547)).

Cellular Location

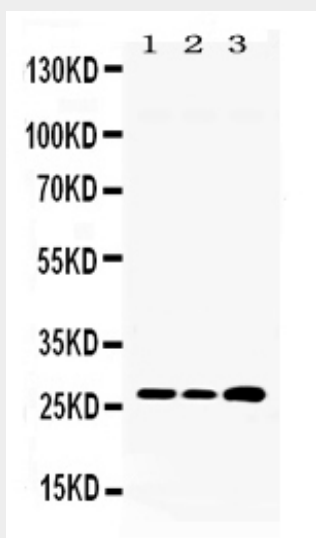
Cytoplasm.

Anti-RPL19 Picoband Antibody - Protocols

Provided below are standard protocols that you may find useful for product applications.

- [Western Blot](#)
- [Blocking Peptides](#)
- [Dot Blot](#)
- [Immunohistochemistry](#)
- [Immunofluorescence](#)
- [Immunoprecipitation](#)
- [Flow Cytometry](#)
- [Cell Culture](#)

Anti-RPL19 Picoband Antibody - Images



Western blot analysis of RPL19 expression in rat liver extract (lane 1) HEPA whole cell lysates

(lane 2) and HEPG2 whole cell lysates (lane 3). RPL19 at 28KD was detected using rabbit anti-RPL19 Antigen Affinity purified polyclonal antibody (Catalog # ABO11710) at 0.5 µg/mL. The blot was developed using chemiluminescence (ECL) method .

Anti-RPL19 Picoband Antibody - Background

60S ribosomal protein L19 is a protein that in humans is encoded by the RPL19 gene. Ribosomes, the organelles that catalyze protein synthesis, consist of a small 40S subunit and a large 60S subunit. Together these subunits are composed of 4 RNA species and approximately 80 structurally distinct proteins. This gene encodes a ribosomal protein that is a component of the 60S subunit. The protein belongs to the L19E family of ribosomal proteins. It is located in the cytoplasm. As is typical for genes encoding ribosomal proteins, there are multiple processed pseudogenes of this gene dispersed through the genome.