

Anti-GM-CSF Picoband Antibody
Catalog # ABO11728**Specification**

Anti-GM-CSF Picoband Antibody - Product Information

Application	WB, IHC-P
Primary Accession	P01587
Host	Rabbit
Reactivity	Mouse
Clonality	Polyclonal
Format	Lyophilized

Description

Rabbit IgG polyclonal antibody for Granulocyte-macrophage colony-stimulating factor(CSF2) detection. Tested with WB, IHC-P in Mouse.

Reconstitution

Add 0.2ml of distilled water will yield a concentration of 500ug/ml.

Anti-GM-CSF Picoband Antibody - Additional Information

Gene ID 12981

Other Names

Granulocyte-macrophage colony-stimulating factor, GM-CSF, Colony-stimulating factor, CSF, Csf2, Csfgm

Calculated MW

16091 MW KDa

Application Details

Immunohistochemistry(Paraffin-embedded Section), 0.5-1 µg/ml, Mouse, By Heat
Western blot, 0.1-0.5 µg/ml, Mouse

Subcellular Localization

Secreted.

Protein Name

Granulocyte-macrophage colony-stimulating factor

Contents

Each vial contains 4mg Trehalose, 0.9mg NaCl, 0.2mg Na2HPO4, 0.05mg NaN3.

Immunogen

E.coli-derived mouse GM-CSF recombinant protein (Position: A18-K141). Mouse GM-CSF shares 54% and 70% amino acid (aa) sequences identity with human and rat GM-CSF, respectively.

Purification

Immunogen affinity purified.

Cross Reactivity

No cross reactivity with other proteins

Storage

At -20°C for one year. After reconstitution, at 4°C for one month. It can also be aliquotted and stored frozen at -20°C for a longer time. Avoid repeated freezing and thawing.

Sequence Similarities

Belongs to the GM-CSF family.

Anti-GM-CSF Picoband Antibody - Protein Information

Name Csf2

Synonyms Csfgm

Function

Cytokine that stimulates the growth and differentiation of hematopoietic precursor cells from various lineages, including granulocytes, macrophages, eosinophils and erythrocytes.

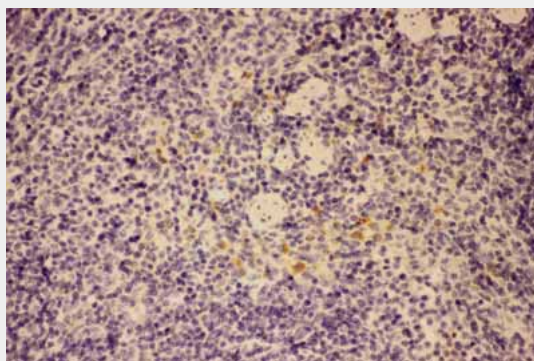
Cellular Location

Secreted.

Anti-GM-CSF Picoband Antibody - Protocols

Provided below are standard protocols that you may find useful for product applications.

- [Western Blot](#)
- [Blocking Peptides](#)
- [Dot Blot](#)
- [Immunohistochemistry](#)
- [Immunofluorescence](#)
- [Immunoprecipitation](#)
- [Flow Cytometry](#)
- [Cell Culture](#)

Anti-GM-CSF Picoband Antibody - Images

Anti-GM-CSF Picoband antibody, ABO11728-1.JPGIHC(P): Mouse Spleen Tissue



Anti-GM-CSF Picoband antibody, ABO11728-2.jpg All lanes: Anti-GM-CSF (ABO11728) at 0.5ug/ml WB: Recombinant Mouse GM-CSF Protein 0.5ng Predicted bind size: 17KD Observed bind size: 17KD

Anti-GM-CSF Picoband Antibody - Background

GM-CSF, Granulocyte-macrophage colony-stimulating factor, is a protein secreted by macrophages, T cells, mast cells, endothelial cells, and fibroblasts. By fluorescence in situ hybridization, the GM-CSF gene is mapped to 5q31.1. GM-CSF is a cytokine that functions as a white blood cell growth factor. GM-CSF stimulates stem cells to produce granulocytes (neutrophils, eosinophils, and basophils) and monocytes. GM-CSF is an essential regulator of neutrophil function.