

Anti-SAP/PTX2 Antibody
Catalog # ABO11744**Specification**

Anti-SAP/PTX2 Antibody - Product Information

Application	IHC, WB
Primary Accession	P12246
Host	Rabbit
Reactivity	Mouse
Clonality	Polyclonal
Format	Lyophilized

Description

Rabbit IgG polyclonal antibody for Serum amyloid P-component(APCS) detection. Tested with WB, IHC-P, ELISA in Mouse.

Reconstitution

Add 0.2ml of distilled water will yield a concentration of 500ug/ml.

Anti-SAP/PTX2 Antibody - Additional Information

Gene ID 20219

Other Names

Serum amyloid P-component, SAP, Apcs, Ptx2, Sap

Calculated MW

Serum amyloid P-component;SAP;Apcs;Ptx2, Sap; KDa

Application Details

ELISA , 0.1-0.5 µg/ml, Mouse, -
Immunohistochemistry(Paraffin-embedded Section), 0.5-1 µg/ml, Mouse, By Heat
Western blot, 0.1-0.5 µg/ml, Mouse

Subcellular Localization

26247 MW

Source

Secreted.

Contents

Each vial contains 0.9mg NaCl, 0.2mg Na2HPO4, 0.05mg NaN3. Carrier free (No BSA) form available in stock. If you want this antibody carrier free please specify "Carrier Free" or "No BSA" in your order note. "

Immunogen

E.coli-derived mouse Serum Amyloid P recombinant protein (Position: Q21-D224). Mouse Serum Amyloid P shares 70% and 80% amino acid (aa) sequences identity with human and rat Serum Amyloid P, respectively.

Purification

Immunogen affinity purified.

Cross Reactivity

No cross reactivity with other proteins

Storage

At -20°C for one year. After reconstitution, at 4°C for one month. It can also be aliquotted and stored frozen at -20°C for a longer time. Avoid repeated freezing and thawing.

Sequence Similarities

Serum amyloid P-component

Anti-SAP/PTX2 Antibody - Protein Information

Name Apcs

Synonyms Ptx2, Sap

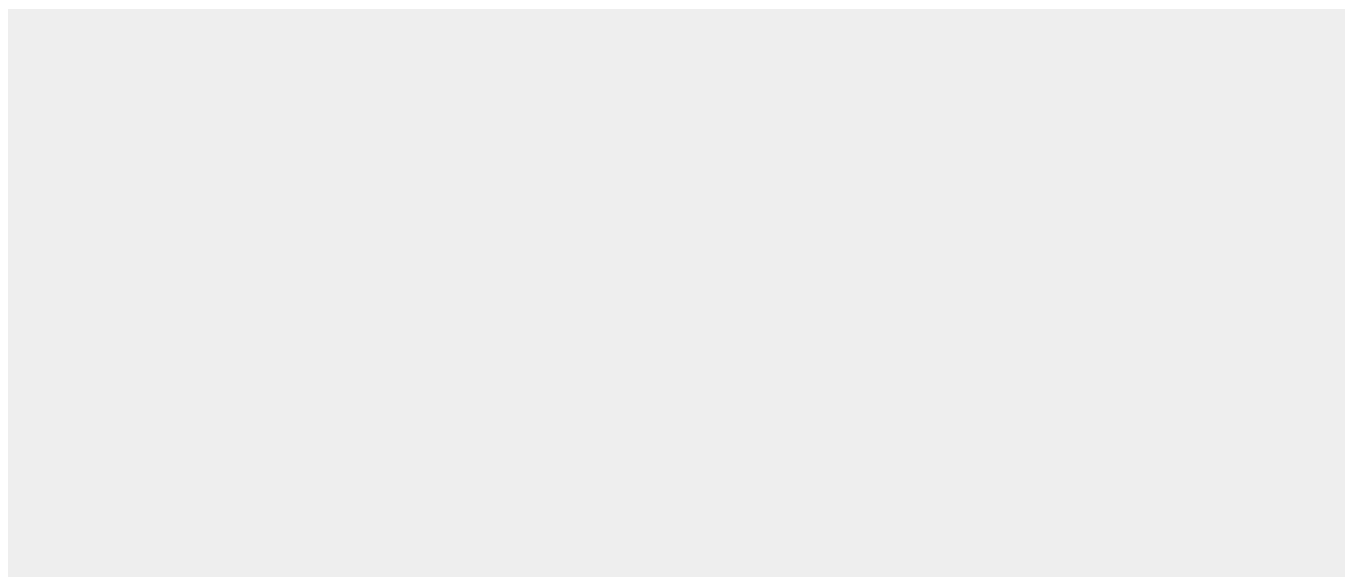
Cellular Location

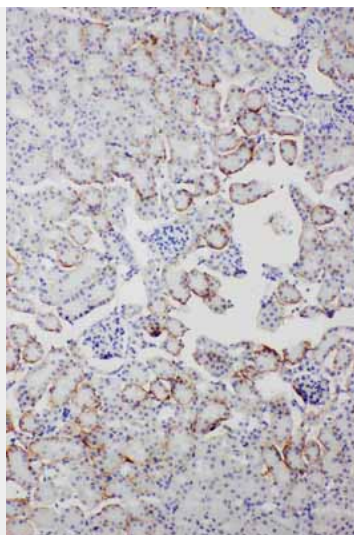
Secreted.

Anti-SAP/PTX2 Antibody - Protocols

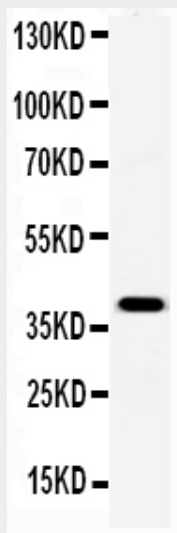
Provided below are standard protocols that you may find useful for product applications.

- [Western Blot](#)
- [Blocking Peptides](#)
- [Dot Blot](#)
- [Immunohistochemistry](#)
- [Immunofluorescence](#)
- [Immunoprecipitation](#)
- [Flow Cytometry](#)
- [Cell Culture](#)

Anti-SAP/PTX2 Antibody - Images



Anti-Serum Amyloid P Picoband antibody, ABO11744-1.JPGIHC(P): Mouse Kidney Tissue



Anti-Serum Amyloid P Picoband antibody, ABO11744-2.jpgAll lanes: Anti-Serum Amyloid P (ABO11744) at 0.5ug/mlWB: Recombinant Mouse Serum Amyloid P Protein 0.5ngPredicted bind size: 39KDObserved bind size: 39KD

Anti-SAP/PTX2 Antibody - Background

Amyloid P component, serum(SAP), also known as PTX2 or APCS, is the identical serum form of amyloid P component(AP), a 25kDa pentameric protein first identified as the pentagonal constituent of in vivo pathological deposits called amyloid". It belongs to the pentraxins family