

Anti-Cathepsin D Picoband Antibody
Catalog # ABO11769**Specification**

Anti-Cathepsin D Picoband Antibody - Product Information

Application	IHC
Primary Accession	P18242
Host	Rabbit
Reactivity	Mouse, Rat
Clonality	Polyclonal
Format	Lyophilized

Description

Rabbit IgG polyclonal antibody for Cathepsin D(CTSD) detection. Tested with WB, IHC-P in Mouse;Rat.

Reconstitution

Add 0.2ml of distilled water will yield a concentration of 500ug/ml.

Anti-Cathepsin D Picoband Antibody - Additional Information

Gene ID 13033

Other Names

Cathepsin D, 3.4.23.5, Ctsd

Calculated MW

44954 MW KDa

Application Details

Immunohistochemistry(Paraffin-embedded Section), 0.5-1 µg/ml, Mouse, Rat, By Heat
Western blot, 0.1-0.5 µg/ml, Mouse

Subcellular Localization

Lysosome. Melanosome . Secreted, extracellular space .

Protein Name

Cathepsin D

Contents

Each vial contains 5mg BSA, 0.9mg NaCl, 0.2mg Na₂HPO₄, 0.05mg NaN₃.

Immunogen

E.coli-derived mouse Cathepsin D recombinant protein (Position: E65-L410). Mouse Cathepsin D shares 85% and 91% amino acid (aa) sequences identity with human and rat Cathepsin D, respectively.

Purification

Immunogen affinity purified.

Cross Reactivity

No cross reactivity with other proteins

Storage

At -20°C for one year. After r°Constitution, at 4°C for one month. It°Can also be aliquotted and stored frozen at -20°C for a longer time.Avoid repeated freezing and thawing.

Anti-Cathepsin D Picoband Antibody - Protein Information**Name** Ctsd**Function**

Acid protease active in intracellular protein breakdown. Plays a role in APP processing following cleavage and activation by ADAM30 which leads to APP degradation.

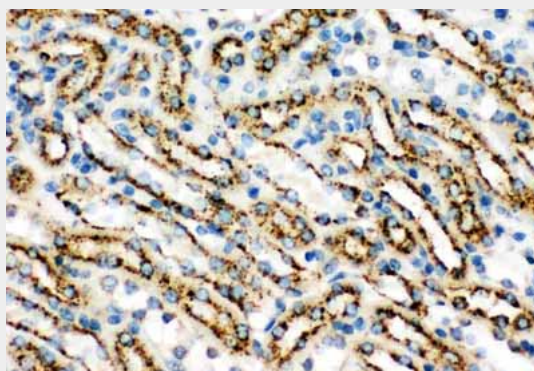
Cellular Location

Lysosome. Melanosome. Secreted, extracellular space

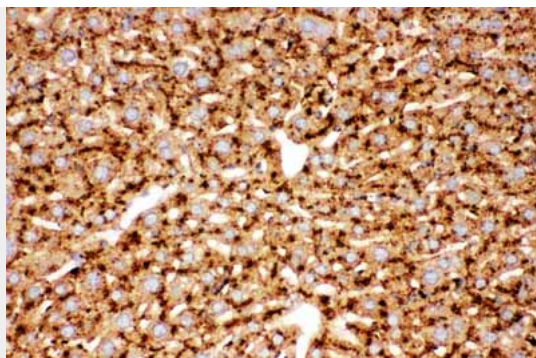
Anti-Cathepsin D Picoband Antibody - Protocols

Provided below are standard protocols that you may find useful for product applications.

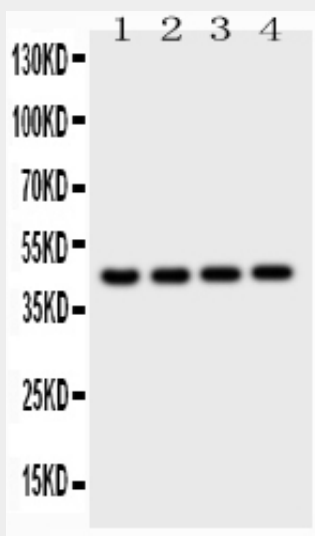
- [Western Blot](#)
- [Blocking Peptides](#)
- [Dot Blot](#)
- [Immunohistochemistry](#)
- [Immunofluorescence](#)
- [Immunoprecipitation](#)
- [Flow Cytometry](#)
- [Cell Culture](#)

Anti-Cathepsin D Picoband Antibody - Images

Anti-Cathepsin D Picoband antibody, ABO11769-1.JPGIHC(P): Mouse Kidney Tissue



Anti-Cathepsin D Picoband antibody, ABO11769-2.JPGIHC(P): Mouse Liver Tissue



Anti-Cathepsin D Picoband antibody, ABO11769-3.jpgAll lanes: Anti-Cathepsin D(ABO11769) at 0.5ug/mlLane 1: Mouse Liver Tissue Lysate at 40ugLane 2: Mouse Brain Tissue Lysate at 40ugLane 3: Mouse Thymus Tissue Lysate at 40ugLane 4: NEURO Whole Cell Lysate at 40ugPredicted bind size: 45KDObserved bind size: 45KD

Anti-Cathepsin D Picoband Antibody - Background

Cathepsin D is a protein that in humans is encoded by the CTSD gene. This proteinase is a member of the peptidase C1 family, having a specificity similar to but narrower than that of pepsin A. It is mapped to 11p15.5. The cDNA encodes a 412-amino acid protein with 20 and 44 amino acids in a pre- and prosegment, respectively. Cathepsin D is one of the lysosomal proteinases. It is ubiquitously expressed and is involved in proteolytic degradation, cell invasion, and apoptosis. Mutations in this gene are involved in the pathogenesis of several diseases, including breast cancer and possibly Alzheimer disease and it has been considered as a breast cancer tumor marker.