

Anti-CCL4/MIP-1 beta Antibody
Catalog # ABO11780**Specification**

Anti-CCL4/MIP-1 beta Antibody - Product Information

Application	WB
Primary Accession	P50230
Host	Rabbit
Reactivity	Rat
Clonality	Polyclonal
Format	Lyophilized

Description

Rabbit IgG polyclonal antibody for C-C motif chemokine 4(CCL4) detection. Tested with WB in Rat.

Reconstitution

Add 0.2ml of distilled water will yield a concentration of 500ug/ml.

Anti-CCL4/MIP-1 beta Antibody - Additional Information

Gene ID 116637

Other Names

C-C motif chemokine 4, Macrophage inflammatory protein 1-beta, MIP-1-beta, Small-inducible cytokine A4, Ccl4, Mip1b, Scya4

Calculated MW

10234 MW KDa

Application Details

Western blot, 0.1-0.5 µg/ml, Rat

Subcellular Localization

Secreted.

Protein Name

C-C motif chemokine 4

Contents

Each vial contains 5mg BSA, 0.9mg NaCl, 0.2mg Na₂HPO₄, 0.05mg NaN₃.

Immunogen

E.coli-derived rat CCL4 recombinant protein (Position: A24-N92). Rat CCL4 shares 80% and 86% amino acid (aa) sequences identity with human and mouse CCL4, respectively.

Purification

Immunogen affinity purified.

Cross Reactivity

No cross reactivity with other proteins

Storage

At -20°C for one year. After reconstitution, at 4°C for one month. It can also be aliquotted and stored frozen at -20°C for a longer time. Avoid repeated freezing and thawing.

Anti-CCL4/MIP-1 beta Antibody - Protein Information

Name Ccl4

Synonyms Mip1b, Scya4

Function

Monokine with inflammatory and chemokinetic properties.

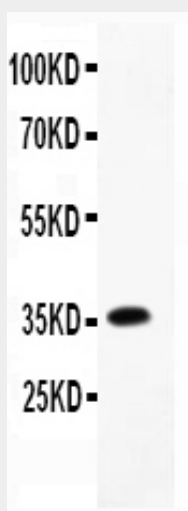
Cellular Location

Secreted.

Anti-CCL4/MIP-1 beta Antibody - Protocols

Provided below are standard protocols that you may find useful for product applications.

- [Western Blot](#)
- [Blocking Peptides](#)
- [Dot Blot](#)
- [Immunohistochemistry](#)
- [Immunofluorescence](#)
- [Immunoprecipitation](#)
- [Flow Cytometry](#)
- [Cell Culture](#)

Anti-CCL4/MIP-1 beta Antibody - Images

Anti-CCL4 Picoband antibody, ABO11780-1.jpg All lanes: Anti-CCL4(ABO11780) at 0.5ug/ml WB: Recombinant Rat CCL4 Protein 0.5ng Predicted bind size: 36KD Observed bind size: 36KD

Anti-CCL4/MIP-1 beta Antibody - Background

Chemokine(C-C motif) ligand 4, also known as CCL4, is a protein which in human is encoded by the CCL4 gene. By analysis of somatic cell hybrids and by in situ hybridization, the CCL4 gene was assigned to 17q21-q23. It is a CC chemokine with specificity for CCR5 receptors. It is a chemoattractant for natural killer cells, monocytes and a variety of other immune cells. CCL4 is a major HIV-suppressive factor produced by CD8+ T cells. Performing-low memory CD8+ T cells that normally synthesize CCL4. Based on functional analysis of CCL4, one or more additional beta chemokine receptors that transduce CCL4 signals must also exist. MIP-1alpha and CCL4 have been shown to lack affinity for the erythrocyte surface chemokine receptor/Duffy antigen that binds many alpha as well as beta chemokines(11, 14).