

**Anti-CREB Picoband Antibody**  
**Catalog # ABO11807****Specification**

---

**Anti-CREB Picoband Antibody - Product Information**

Application	WB
Primary Accession	<a href="#">P16220</a>
Host	Rabbit
Reactivity	Human, Rat
Clonality	Polyclonal
Format	Lyophilized

**Description**

Rabbit IgG polyclonal antibody for Cyclic AMP-responsive element-binding protein 1(CREB1) detection. Tested with WB in Human;Rat.

**Reconstitution**

Add 0.2ml of distilled water will yield a concentration of 500ug/ml.

**Anti-CREB Picoband Antibody - Additional Information**

**Gene ID** 1385

**Other Names**

Cyclic AMP-responsive element-binding protein 1, CREB-1, cAMP-responsive element-binding protein 1, CREB1

**Calculated MW**

36688 MW KDa

**Application Details**

Western blot, 0.1-0.5 µg/ml, Human, Rat<br>

**Subcellular Localization**

Nucleus .

**Protein Name**

Cyclic AMP-responsive element-binding protein 1

**Contents**

Each vial contains 5mg BSA, 0.9mg NaCl, 0.2mg Na<sub>2</sub>HPO<sub>4</sub>, 0.05mg NaN<sub>3</sub>.

**Immunogen**

E.coli-derived human CREB recombinant protein (Position: M1-T177). Human CREB shares 99% and 98% amino acid (aa) sequences identity with mouse and rat CREB, respectively.

**Purification**

Immunogen affinity purified.

**Cross Reactivity**

No cross reactivity with other proteins

Storage

**At -20°C for one year. After r°Constitution, at 4°C for one month. It°Can also be aliquotted and stored frozen at -20°C for a longer time.Avoid repeated freezing and thawing.**

#### **Sequence Similarities**

Belongs to the bZIP family.

### **Anti-CREB Picoband Antibody - Protein Information**

**Name** CREB1

#### **Function**

Phosphorylation-dependent transcription factor that stimulates transcription upon binding to the DNA cAMP response element (CRE), a sequence present in many viral and cellular promoters (By similarity). Transcription activation is enhanced by the TORC coactivators which act independently of Ser-119 phosphorylation (PubMed:<a href="http://www.uniprot.org/citations/14536081" target="\_blank">14536081</a>). Involved in different cellular processes including the synchronization of circadian rhythmicity and the differentiation of adipose cells (By similarity). Regulates the expression of apoptotic and inflammatory response factors in cardiomyocytes in response to ERFE-mediated activation of AKT signaling (By similarity).

#### **Cellular Location**

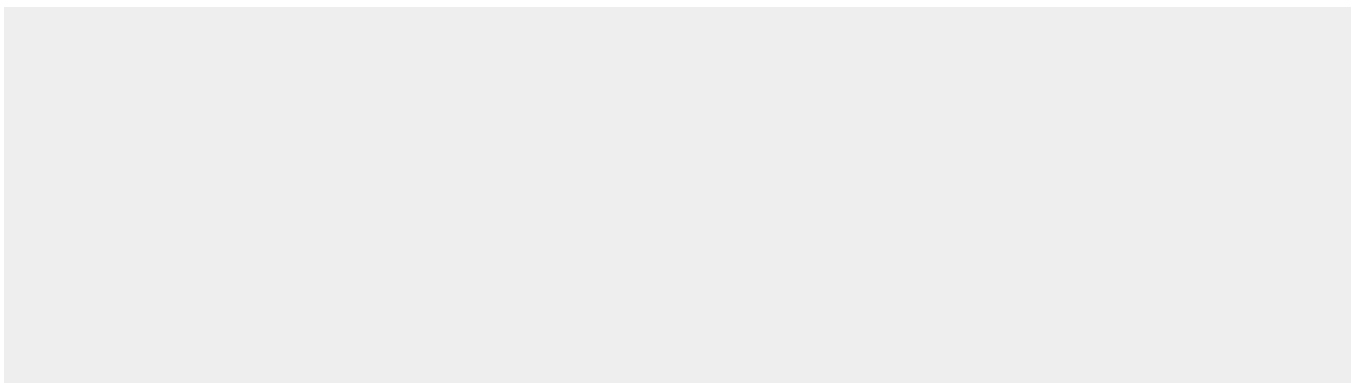
Nucleus {ECO:0000255|PROSITE-ProRule:PRU00312, ECO:0000255|PROSITE-ProRule:PRU00978, ECO:0000269|PubMed:12552083}

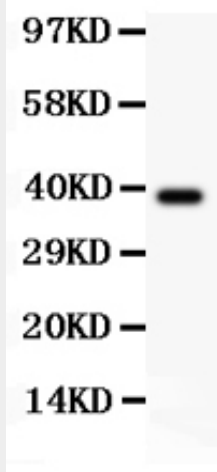
### **Anti-CREB Picoband Antibody - Protocols**

Provided below are standard protocols that you may find useful for product applications.

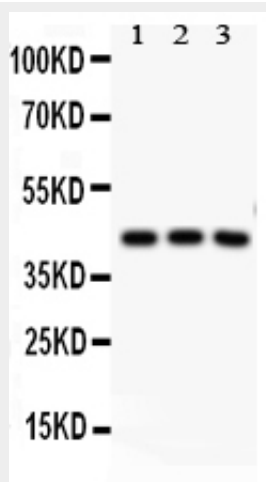
- [Western Blot](#)
- [Blocking Peptides](#)
- [Dot Blot](#)
- [Immunohistochemistry](#)
- [Immunofluorescence](#)
- [Immunoprecipitation](#)
- [Flow Cytometry](#)
- [Cell Culture](#)

### **Anti-CREB Picoband Antibody - Images**





Anti-CREB Picoband antibody, ABO11807-1.jpg All lanes: Anti CREB (ABO11807) at 0.5ug/ml WB: Recombinant Human CREB Protein 0.5ng Predicted bind size: 38KD Observed bind size: 38KD



Anti-CREB Picoband antibody, ABO11807-2.jpg All lanes: Anti CREB (ABO11807) at 0.5ug/ml Lane 1: Rat Thymus Tissue Lysate at 50ug Lane 2: Rat Brain Tissue Lysate at 50ug Lane 3: HT1080 Whole Cell Lysate at 40ug Predicted bind size: 43KD Observed bind size: 43KD

### Anti-CREB Picoband Antibody - Background

CREB1, also known as cAMP responsive element binding protein 1, is a protein that in humans is encoded by the CREB1 gene. It is mapped to 2q33.3. This protein binds the cAMP response element, a DNA nucleotide sequence present in many viral and cellular promoters. The binding of CREB1 stimulates transcription. This protein is a CREB transcription factor that is a member of the leucine zipper family of DNA-binding proteins. This protein binds as a homodimer to the cAMP-responsive element, an octameric palindrome. The protein is phosphorylated by several protein kinases, and induces transcription of genes in response to hormonal stimulation of the cAMP pathway.