

**Anti-EPB41L1 Picoband Antibody**  
**Catalog # ABO11871****Specification**

---

**Anti-EPB41L1 Picoband Antibody - Product Information**

Application	WB
Primary Accession	<a href="#">Q9H4G0</a>
Host	Rabbit
Reactivity	Human, Mouse, Rat
Clonality	Polyclonal
Format	Lyophilized

**Description**

Rabbit IgG polyclonal antibody for Band 4.1-like protein 1(EPB41L1) detection. Tested with WB in Human;Mouse;Rat.

**Reconstitution**

Add 0.2ml of distilled water will yield a concentration of 500ug/ml.

**Anti-EPB41L1 Picoband Antibody - Additional Information**

**Gene ID** 2036

**Other Names**

Band 4.1-like protein 1, Neuronal protein 4.1, 4.1N, EPB41L1, KIAA0338

**Calculated MW**

98503 MW KDa

**Application Details**

Western blot, 0.1-0.5 µg/ml, Human, Mouse, Rat<br>

**Subcellular Localization**

Cytoplasm, cytoskeleton.

**Tissue Specificity**

Highest expression in brain, lower in heart, kidney, pancreas, placenta, lung and skeletal muscle.

**Protein Name**

Band 4.1-like protein 1

**Contents**

Each vial contains 5mg BSA, 0.9mg NaCl, 0.2mg Na<sub>2</sub>HPO<sub>4</sub>, 0.05mg Na<sub>3</sub>.

**Immunogen**

E.coli-derived human EPB41L1 recombinant protein (Position: Q691-S881). Human EPB41L1 shares 91% amino acid (aa) sequence identity with both mouse and rat EPB41L1.

**Purification**

Immunogen affinity purified.

**Cross Reactivity**

No cross reactivity with other proteins

**Storage**

**At -20°C for one year. After reconstitution, at 4°C for one month. It can also be aliquotted and stored frozen at -20°C for a longer time. Avoid repeated freezing and thawing.**

**Sequence Similarities**

Contains 1 FERM domain.

**Anti-EPB41L1 Picoband Antibody - Protein Information**

**Name** EPB41L1 ([HGNC:3378](#))

**Function**

May function to confer stability and plasticity to neuronal membrane via multiple interactions, including the spectrin-actin-based cytoskeleton, integral membrane channels and membrane-associated guanylate kinases.

**Cellular Location**

Cytoplasm, cytoskeleton.

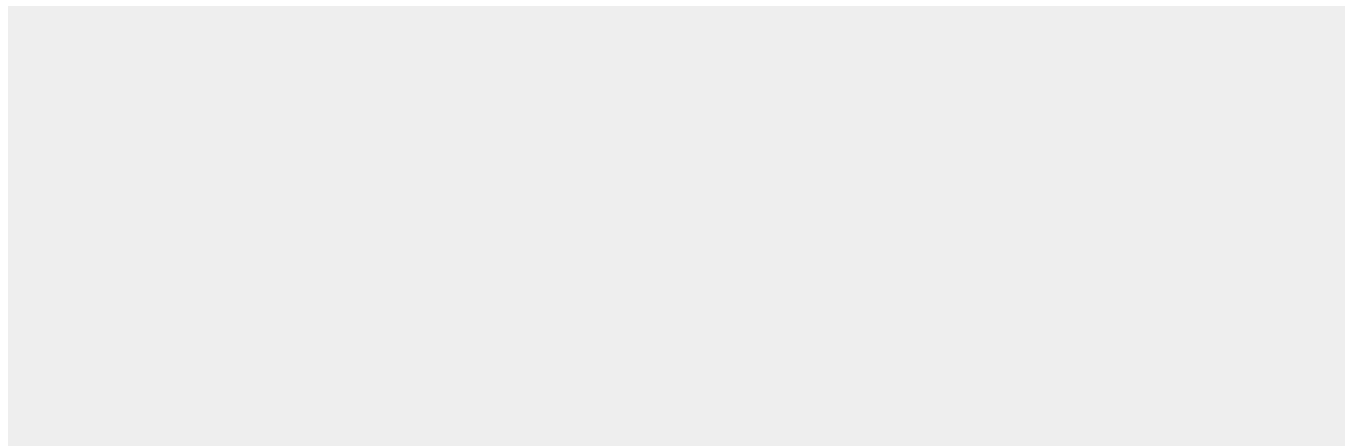
**Tissue Location**

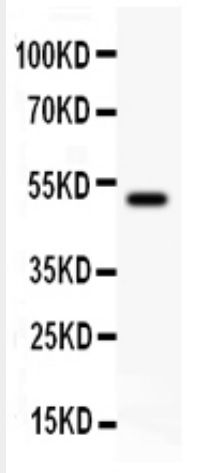
Highest expression in brain, lower in heart, kidney, pancreas, placenta, lung and skeletal muscle

**Anti-EPB41L1 Picoband Antibody - Protocols**

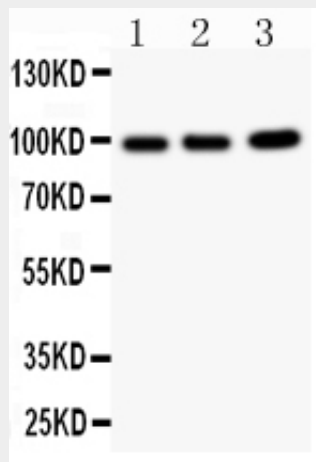
Provided below are standard protocols that you may find useful for product applications.

- [Western Blot](#)
- [Blocking Peptides](#)
- [Dot Blot](#)
- [Immunohistochemistry](#)
- [Immunofluorescence](#)
- [Immunoprecipitation](#)
- [Flow Cytometry](#)
- [Cell Culture](#)

**Anti-EPB41L1 Picoband Antibody - Images**



Anti- EPB41L1 Picoband antibody, ABO11871, Western blottingAll lanes: Anti EPB41L1 (ABO11871) at 0.5ug/mlWB: Recombinant Human EPB41L1 Protein 0.5ngPredicted bind size: 50KDObserved bind size: 50KD



Anti- EPB41L1 Picoband antibody, ABO11871, Western blottingAll lanes: Anti EPB41L1 (ABO11871) at 0.5ug/mlLane 1: Rat Brain Tissue Lysate at 50ugLane 2: Mouse Brain Tissue Lysate at 50ugLane 3: A549 Whole Cell Lysate at 40ugPredicted bind size: 98KD Observed bind size: 98KD

### Anti-EPB41L1 Picoband Antibody - Background

Band 4.1-like protein 1 is a protein that in humans is encoded by the EPB41L1 gene. This gene is mapped to 20q11.23. It is found that a heterozygous missense mutation in the EPB41L1 gene causing nonsyndromic intellectual disability. This gene may function to confer stability and plasticity to neuronal membrane via multiple interactions, including the spectrin-actin-based cytoskeleton, integral membrane channels and membrane-associated guanylate kinases. What's more, EPB41L1 is a multifunctional protein that mediates interactions between the erythrocyte cytoskeleton and the overlying plasma membrane.