

**Anti-complement C5a Antibody**  
**Catalog # ABO11879****Specification**

---

**Anti-complement C5a Antibody - Product Information**

Application	WB, IHC
Primary Accession	<a href="#">P08650</a>
Host	Rabbit
Reactivity	Rat
Clonality	Polyclonal
Format	Lyophilized

**Description**

Rabbit IgG polyclonal antibody for Complement C5(C5) detection. Tested with WB, IHC-P in Rat.

**Reconstitution**

Add 0.2ml of distilled water will yield a concentration of 500ug/ml.

**Anti-complement C5a Antibody - Additional Information****Other Names**

Complement C5, C5a anaphylatoxin, C5

**Calculated MW**

8981 MW KDa

**Application Details**

Immunohistochemistry(Paraffin-embedded Section), 0.5-1 µg/ml, Rat, By Heat<br>Western blot, 0.1-0.5 µg/ml, Rat<br>

**Subcellular Localization**

Secreted.

**Protein Name**

Complement C5

**Contents**

Each vial contains 5mg BSA, 0.9mg NaCl, 0.2mg Na<sub>2</sub>HPO<sub>4</sub>, 0.05mg NaN<sub>3</sub>.

**Immunogen**

E.coli-derived rat C5a recombinant protein (Position: D1-R77). Rat C5a shares 62% and 82% amino acid (aa) sequences identity with human and mouse C5a, respectively.

**Purification**

Immunogen affinity purified.

**Cross Reactivity**

No cross reactivity with other proteins

**Storage**

**At -20°C for one year. After r°Constitution,**

at 4°C for one month. It°Can also be aliquotted and stored frozen at -20°C for a longer time.Avoid repeated freezing and thawing.

## Anti-complement C5a Antibody - Protein Information

**Name** C5

### Function

Activation of C5 by a C5 convertase initiates the spontaneous assembly of the late complement components, C5-C9, into the membrane attack complex. C5b has a transient binding site for C6. The C5b-C6 complex is the foundation upon which the lytic complex is assembled.

### Cellular Location

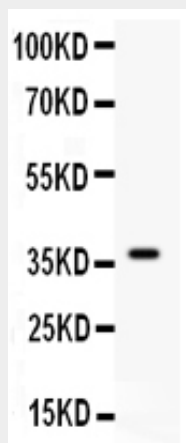
Secreted.

## Anti-complement C5a Antibody - Protocols

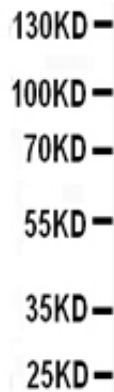
Provided below are standard protocols that you may find useful for product applications.

- [Western Blot](#)
- [Blocking Peptides](#)
- [Dot Blot](#)
- [Immunohistochemistry](#)
- [Immunofluorescence](#)
- [Immunoprecipitation](#)
- [Flow Cytometry](#)
- [Cell Culture](#)

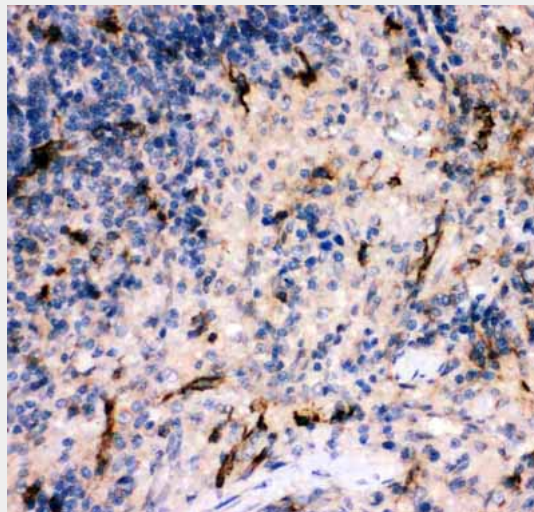
## Anti-complement C5a Antibody - Images



Anti- C5A antibody, ABO11879, Western blottingAll lanes: Anti C5A (ABO11879) at 0.5ug/mlWB: Recombinant Rat C5A Protein 0.5ngPredicted bind size: 37KDObserved bind size: 37KD



Anti- C5A antibody, ABO11879, Western blottingAll lanes: Anti C5A (ABO11879) at 0.5ug/mlWB: Rat Liver Tissue Lysate at 50ugPredicted bind size: 115KDObserved bind size: 115KD



Anti- C5A antibody, ABO11879, IHC(P)IHC(P): Rat Spleen Tissue

### Anti-complement C5a Antibody - Background

C5a is a protein fragment released from complement component C5. This gene is mapped to 9q33.2. The protein encoded by this gene is the fifth component of complement, which plays an important role in inflammatory and cell killing processes. This protein is comprised of alpha and beta polypeptide chains that are linked by a disulfide bridge. An activation peptide, C5a, which is an anaphylatoxin that possesses potent spasmogenic and chemotactic activity, is derived from the alpha polypeptide via cleavage with a convertase. C5a plays a key role in increasing migration and adherence of neutrophils and monocytes to vessel walls. Mutations in this gene cause complement component 5 deficiency, a disease where patients show a propensity for severe recurrent infections. Defects in this gene have also been linked to susceptibility to liver fibrosis and to rheumatoid arthritis.