

Anti-Haptoglobin Picoband Antibody
Catalog # ABO11910**Specification**

Anti-Haptoglobin Picoband Antibody - Product Information

Application	WB, IHC
Primary Accession	P00738
Host	Rabbit
Reactivity	Human, Mouse
Clonality	Polyclonal
Format	Lyophilized

Description

Rabbit IgG polyclonal antibody for Haptoglobin(HP) detection. Tested with WB, IHC-P in Human;Mouse.

Reconstitution

Add 0.2ml of distilled water will yield a concentration of 500ug/ml.

Anti-Haptoglobin Picoband Antibody - Additional Information

Gene ID 3240

Other Names

Haptoglobin, Zonulin, Haptoglobin alpha chain, Haptoglobin beta chain, HP

Calculated MW

45205 MW KDa

Application Details

Immunohistochemistry(Paraffin-embedded Section), 0.5-1 µg/ml, Human, By Heat
Western blot, 0.1-0.5 µg/ml, Human, Mouse

Subcellular Localization

Secreted.

Tissue Specificity

Expressed by the liver and secreted in plasma.

Protein Name

Haptoglobin

Contents

Each vial contains 5mg BSA, 0.9mg NaCl, 0.2mg Na₂HPO₄, 0.05mg NaN₃.

Immunogen

A synthetic peptide corresponding to a sequence in the middle region of human Haptoglobin(128-160aa NNEKQWINKAVGDKLPECEAVCGKPKNPANPVQ), different from the related mouse sequence by ten amino acids, and from the related rat sequence by nine amino acids.

Purification

Immunogen affinity purified.

Cross Reactivity

No cross reactivity with other proteins

Storage

At -20°C for one year. After reconstitution, at 4°C for one month. It can also be aliquotted and stored frozen at -20°C for a longer time. Avoid repeated freezing and thawing.

Sequence Similarities

Belongs to the peptidase S1 family.

Anti-Haptoglobin Picoband Antibody - Protein Information**Name** HP**Function**

As a result of hemolysis, hemoglobin is found to accumulate in the kidney and is secreted in the urine. Haptoglobin captures, and combines with free plasma hemoglobin to allow hepatic recycling of heme iron and to prevent kidney damage. Haptoglobin also acts as an antioxidant, has antibacterial activity, and plays a role in modulating many aspects of the acute phase response. Hemoglobin/haptoglobin complexes are rapidly cleared by the macrophage CD163 scavenger receptor expressed on the surface of liver Kupfer cells through an endocytic lysosomal degradation pathway.

Cellular Location

Secreted.

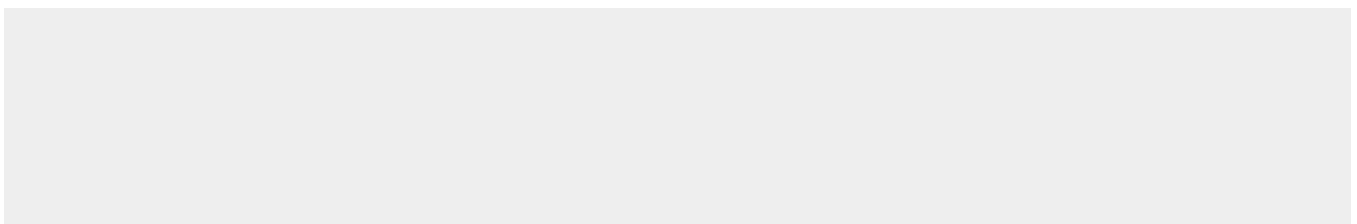
Tissue Location

Expressed by the liver and secreted in plasma.

Anti-Haptoglobin Picoband Antibody - Protocols

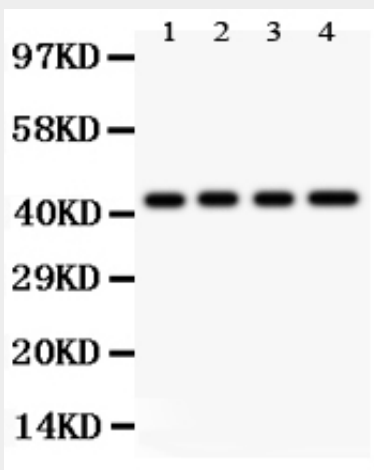
Provided below are standard protocols that you may find useful for product applications.

- [Western Blot](#)
- [Blocking Peptides](#)
- [Dot Blot](#)
- [Immunohistochemistry](#)
- [Immunofluorescence](#)
- [Immunoprecipitation](#)
- [Flow Cytometry](#)
- [Cell Culture](#)

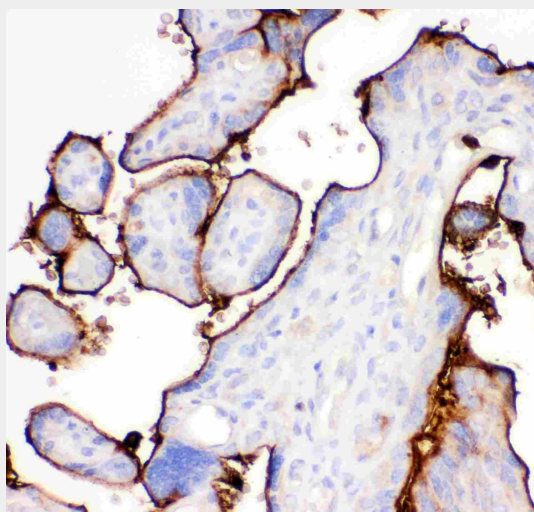
Anti-Haptoglobin Picoband Antibody - Images

100KD —
70KD —
55KD —
35KD —
25KD —
15KD —

Anti- Haptoglobin antibody, ABO11910, Western blotting All lanes: Anti Haptoglobin (ABO11910) at 0.5ug/ml WB: Recombinant Human Haptoglobin Protein 0.5ng Predicted bind size: 38KD Observed bind size: 38KD



Anti- Haptoglobin antibody, ABO11910, Western blotting All lanes: Anti Haptoglobin (ABO11910) at 0.5ug/ml Lane 1: HELA Whole Cell Lysate at 40ug Lane 2: SMMC Whole Cell Lysate at 40ug Lane 3: HEPA Whole Cell Lysate at 40ug Lane 4: HEPG2 Whole Cell Lysate at 40ug Predicted bind size: 45KD Observed bind size: 45KD



Anti- Haptoglobin antibody, ABO11910, IHC(P) IHC(P): Human Placenta Tissue

Anti-Haptoglobin Picoband Antibody - Background

Haptoglobin(HP), is a protein that in humans is encoded by the HP gene. Haptoglobin, a plasma glycoprotein that binds free hemoglobin, has a tetrameric structure of 2 alpha and 2 beta polypeptides that are covalently associated by disulfide bonds. Haptoglobin is homologous to serine proteases of the chymotrypsinogen family. A major function of haptoglobin is to bind hemoglobin(Hb) to form a stable Hp-Hb complex and thereby prevent Hb-induced oxidative tissue damage. Haptoglobin is an unusual secretory protein in that it is proteolytically processed in the endoplasmic reticulum and not in the Golgi. In clinical settings, the haptoglobulin assay is used to screen for and monitor intravascular hemolytic anemia.