

Anti-Hsp27 Picoband Antibody
Catalog # ABO11928**Specification**

Anti-Hsp27 Picoband Antibody - Product Information

Application	WB, IHC-P, IHC-F
Primary Accession	P04792
Host	Rabbit
Reactivity	Human
Clonality	Polyclonal
Format	Lyophilized

Description

Rabbit IgG polyclonal antibody for Heat shock protein beta-1(HSPB1) detection. Tested with WB, IHC-P, IHC-F in Human.

Reconstitution

Add 0.2ml of distilled water will yield a concentration of 500ug/ml.

Anti-Hsp27 Picoband Antibody - Additional Information

Gene ID 3315

Other Names

Heat shock protein beta-1, HspB1, 28 kDa heat shock protein, Estrogen-regulated 24 kDa protein, Heat shock 27 kDa protein, HSP 27, Stress-responsive protein 27, SRP27, HSPB1, HSP27, HSP28

Calculated MW

22783 MW KDa

Application Details

Immunohistochemistry(Frozen Section), 0.5-1 µg/ml, Human,
-
Immunohistochemistry(Paraffin-embedded Section), 0.5-1 µg/ml, Human, By
Heat
Western blot, 0.1-0.5 µg/ml, Human

Subcellular Localization

Cytoplasm. Nucleus. Cytoplasm, cytoskeleton, spindle. Cytoplasmic in interphase cells. Colocalizes with mitotic spindles in mitotic cells. Translocates to the nucleus during heat shock and resides in sub-nuclear structures known as SC35 speckles or nuclear splicing speckles.

Tissue Specificity

Detected in all tissues tested: skeletal muscle, heart, aorta, large intestine, small intestine, stomach, esophagus, bladder, adrenal gland, thyroid, pancreas, testis, adipose tissue, kidney, liver, spleen, cerebral cortex, blood serum and cerebrospinal fluid. Highest levels are found in the heart and in tissues composed of striated and smooth muscle. .

Protein Name

Heat shock protein beta-1

Contents

Each vial contains 5mg BSA, 0.9mg NaCl, 0.2mg Na₂HPO₄, 0.05mg NaN₃.

Immunogen

E.coli-derived human Hsp27 recombinant protein (Position: M1-K205). Human Hsp27 shares 83% amino acid (aa) sequence identity with mouse Hsp27.

Purification

Immunogen affinity purified.

Cross Reactivity

No cross reactivity with other proteins

Storage

At -20°C for one year. After reconstitution, at 4°C for one month. It can also be aliquotted and stored frozen at -20°C for a longer time. Avoid repeated freezing and thawing.

Sequence Similarities

Belongs to the small heat shock protein (HSP20) family.

Anti-Hsp27 Picoband Antibody - Protein Information

Name HSPB1

Synonyms HSP27, HSP28

Function

Small heat shock protein which functions as a molecular chaperone probably maintaining denatured proteins in a folding-competent state (PubMed: [10383393](http://www.uniprot.org/citations/10383393), PubMed: [20178975](http://www.uniprot.org/citations/20178975)). Plays a role in stress resistance and actin organization (PubMed: [19166925](http://www.uniprot.org/citations/19166925)). Through its molecular chaperone activity may regulate numerous biological processes including the phosphorylation and the axonal transport of neurofilament proteins (PubMed: [23728742](http://www.uniprot.org/citations/23728742)).

Cellular Location

Cytoplasm. Nucleus Cytoplasm, cytoskeleton, spindle Note=Cytoplasmic in interphase cells. Colocalizes with mitotic spindles in mitotic cells. Translocates to the nucleus during heat shock and resides in sub-nuclear structures known as SC35 speckles or nuclear splicing speckles.

Tissue Location

Detected in all tissues tested: skeletal muscle, heart, aorta, large intestine, small intestine, stomach, esophagus, bladder, adrenal gland, thyroid, pancreas, testis, adipose tissue, kidney, liver, spleen, cerebral cortex, blood serum and cerebrospinal fluid. Highest levels are found in the heart and in tissues composed of striated and smooth muscle.

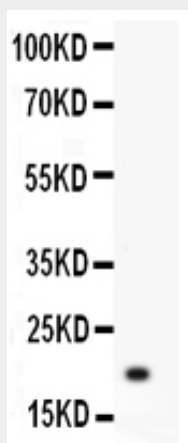
Anti-Hsp27 Picoband Antibody - Protocols

Provided below are standard protocols that you may find useful for product applications.

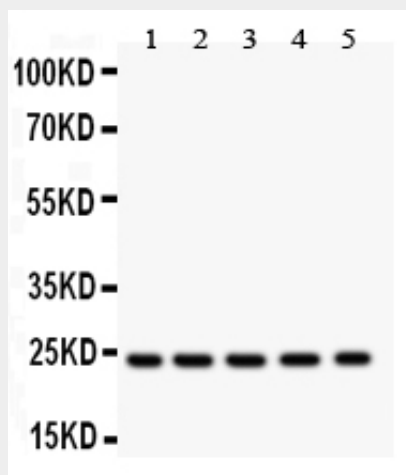
- [Western Blot](#)

- [Blocking Peptides](#)
- [Dot Blot](#)
- [Immunohistochemistry](#)
- [Immunofluorescence](#)
- [Immunoprecipitation](#)
- [Flow Cytometry](#)
- [Cell Culture](#)

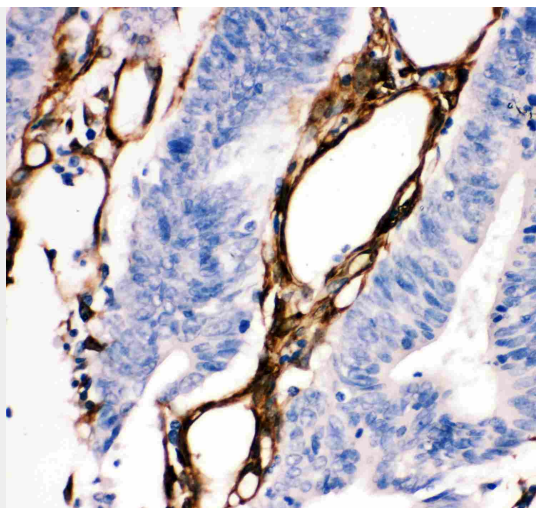
Anti-Hsp27 Picoband Antibody - Images



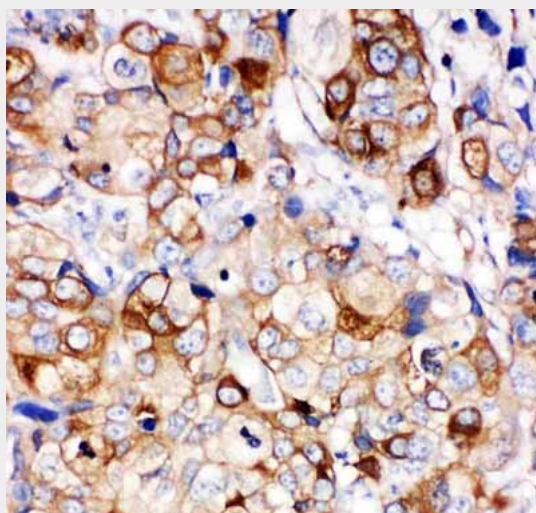
Anti- HSP27 antibody, ABO11928, Western blotting All lanes: Anti HSP27 (ABO11928) at 0.5ug/ml WB: Recombinant Human HSP27 Protein 0.5ng Predicted bind size: 19KD Observed bind size: 19KD



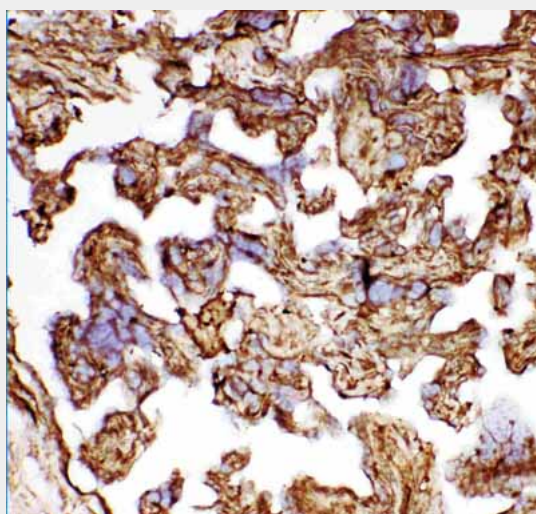
Anti- HSP27 antibody, ABO11928, Western blotting All lanes: Anti HSP27 (ABO11928) at 0.5ug/ml Lane 1: NRK Whole Cell Lysate at 40ug Lane 2: HELA Whole Cell Lysate at 40ug Lane 3: A549 Whole Cell Lysate at 40ug Lane 4: COLO320 Whole Cell Lysate at 40ug Lane 5: HEPG2 Whole Cell Lysate at 40ug Predicted bind size: 23KD Observed bind size: 23KD



Anti- HSP27 antibody, ABO11928, IHC(P)IHC(P): Human Intestinal Cancer Tissue



Anti- HSP27 antibody, ABO11928, IHC(P)IHC(P): Human Mammary Cancer Tissue



Anti- HSP27 antibody, ABO11928, IHC(F)IHC(F): Human Placenta Tissue

Anti-Hsp27 Picoband Antibody - Background

HSPB1(Heat shock 27kDa protein 1), also known as HSP27, is a protein that in humans is encoded by the HSPB1 gene. HSP27 gene is mapped to 7q11.23. The protein encoded by this gene is induced by environmental stress and developmental changes. The encoded protein is involved in stress resistance and actin organization and translocates from the cytoplasm to the nucleus upon stress induction. Defects in this gene are a cause of Charcot-Marie-Tooth disease type 2F (CMT2F) and distal hereditary motor neuropathy (dHMN).