

Anti-Kallikrein 3 Antibody
Catalog # ABO11950**Specification**

Anti-Kallikrein 3 Antibody - Product Information

Application	WB
Primary Accession	P07288
Host	Rabbit
Reactivity	Human, Rat
Clonality	Polyclonal
Format	Lyophilized

Description

Rabbit IgG polyclonal antibody for Prostate-specific antigen(KLK3) detection. Tested with WB in Human;Rat.

Reconstitution

Add 0.2ml of distilled water will yield a concentration of 500ug/ml.

Anti-Kallikrein 3 Antibody - Additional Information

Gene ID 354

Other Names

Prostate-specific antigen, PSA, 3.4.21.77, Gamma-seminoprotein, Semin, Kallikrein-3, P-30 antigen, Semenogelase, KLK3, APS

Calculated MW

28741 MW KDa

Application Details

Western blot, 0.1-0.5 µg/ml, Human, Rat

Subcellular Localization

Secreted.

Protein Name

Prostate-specific antigen

Contents

Each vial contains 5mg BSA, 0.9mg NaCl, 0.2mg Na₂HPO₄, 0.05mg NaN₃.

Immunogen

E.coli-derived human PSA recombinant protein (Position: I25-P261). Human PSA shares 54% amino acid (aa) sequence identity with rat PSA.

Purification

Immunogen affinity purified.

Cross Reactivity

No cross reactivity with other proteins

Storage

At -20°C for one year. After reconstitution, at 4°C for one month. It can also be aliquotted and stored frozen at -20°C for a longer time. Avoid repeated freezing and thawing.

Sequence Similarities

Belongs to the peptidase S1 family. Kallikrein subfamily.

Anti-Kallikrein 3 Antibody - Protein Information

Name KLK3

Synonyms APS

Function

Hydrolyzes semenogelin-1 thus leading to the liquefaction of the seminal coagulum.

Cellular Location

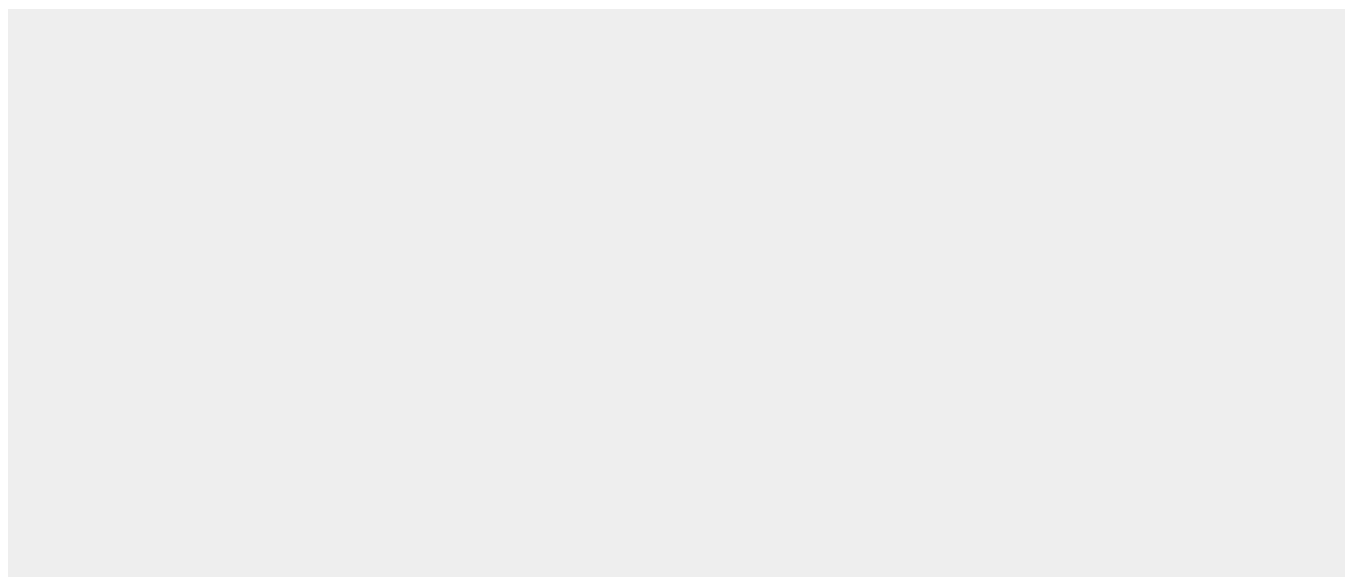
Secreted.

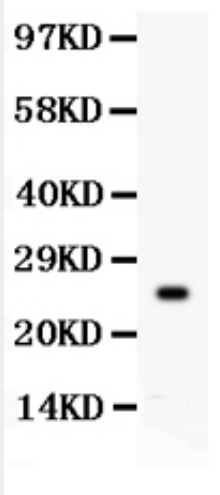
Anti-Kallikrein 3 Antibody - Protocols

Provided below are standard protocols that you may find useful for product applications.

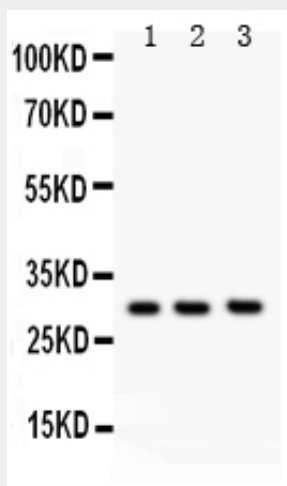
- [Western Blot](#)
- [Blocking Peptides](#)
- [Dot Blot](#)
- [Immunohistochemistry](#)
- [Immunofluorescence](#)
- [Immunoprecipitation](#)
- [Flow Cytometry](#)
- [Cell Culture](#)

Anti-Kallikrein 3 Antibody - Images





Anti- PSA Picoband antibody, ABO11950, Western blottingAll lanes: Anti PSA (ABO11950) at 0.5ug/mlWB: Recombinant Human PSA Protein 0.5ngPredicted bind size: 25KDObserved bind size: 25KD



Anti- PSA Picoband antibody, ABO11950, Western blottingAll lanes: Anti PSA (ABO11950) at 0.5ug/mlLane 1: Rat Brain Tissue Lysate at 50ugLane 2: Rat Kidney Tissue Lysate at 50ugLane 3: Human Placenta Tissue Lysate at 50ugPredicted bind size: 29KDObserved bind size: 29KD

Anti-Kallikrein 3 Antibody - Background

Prostate-specific antigen (PSA), also known as gamma-seminoprotein or kallikrein-3 (KLK3), is a glycoprotein enzyme encoded in humans by the KLK3 gene. KLK3 is a member of the kallikrein-related peptidase family and is secreted by the epithelial cells of the prostate gland. This gene is mapped to 19q13.33. KLK3 is present in small quantities in the serum of men with healthy prostates, but is often elevated in the presence of prostate cancer or other prostate disorders. KLK3 is produced for the ejaculate where it liquifies the semen in the seminal coagulum and allows sperm to swim freely. It is also believed to be instrumental in dissolving the cervical mucous cap, allowing the entry of sperm. It is not a unique indicator of prostate cancer, but may also detect prostatitis or benign prostatic hyperplasia.