

Anti-Semaphorin 3A Picoband Antibody
Catalog # ABO12044**Specification**

Anti-Semaphorin 3A Picoband Antibody - Product Information

Application	WB
Primary Accession	Q14563
Host	Rabbit
Reactivity	Human
Clonality	Polyclonal
Format	Lyophilized

Description

Rabbit IgG polyclonal antibody for Semaphorin-3A(SEMA3A) detection. Tested with WB in Human.

Reconstitution

Add 0.2ml of distilled water will yield a concentration of 500ug/ml.

Anti-Semaphorin 3A Picoband Antibody - Additional Information

Gene ID 10371

Other Names

Semaphorin-3A, Semaphorin III, Sema III, SEMA3A, SEMAD

Calculated MW

88889 MW KDa

Application Details

Western blot, 0.1-0.5 µg/ml, Human

Subcellular Localization

Secreted .

Protein Name

Semaphorin-3A

Contents

Each vial contains 5mg BSA, 0.9mg NaCl, 0.2mg Na₂HPO₄, 0.05mg Na₃.

Immunogen

E.coli-derived human Semaphorin 3A recombinant protein (Position: K550-V771). Human Semaphorin 3A shares 93% and 94% amino acid (aa) sequence identity with mouse and rat Semaphorin 3A, respectively.

Purification

Immunogen affinity purified.

Cross Reactivity

No cross reactivity with other proteins.

Storage

At -20°C for one year. After reconstitution, at 4°C for one month. It can also be aliquotted and stored frozen at -20°C for a longer time. Avoid repeated freezing and thawing.

Sequence Similarities

Belongs to the semaphorin family.

Anti-Semaphorin 3A Picoband Antibody - Protein Information

Name SEMA3A

Synonyms SEMAD

Function

Involved in the development of the olfactory system and in neuronal control of puberty. Induces the collapse and paralysis of neuronal growth cones. Could serve as a ligand that guides specific growth cones by a motility-inhibiting mechanism. Binds to the complex neuropilin-1/plexin-1.

Cellular Location

Secreted.

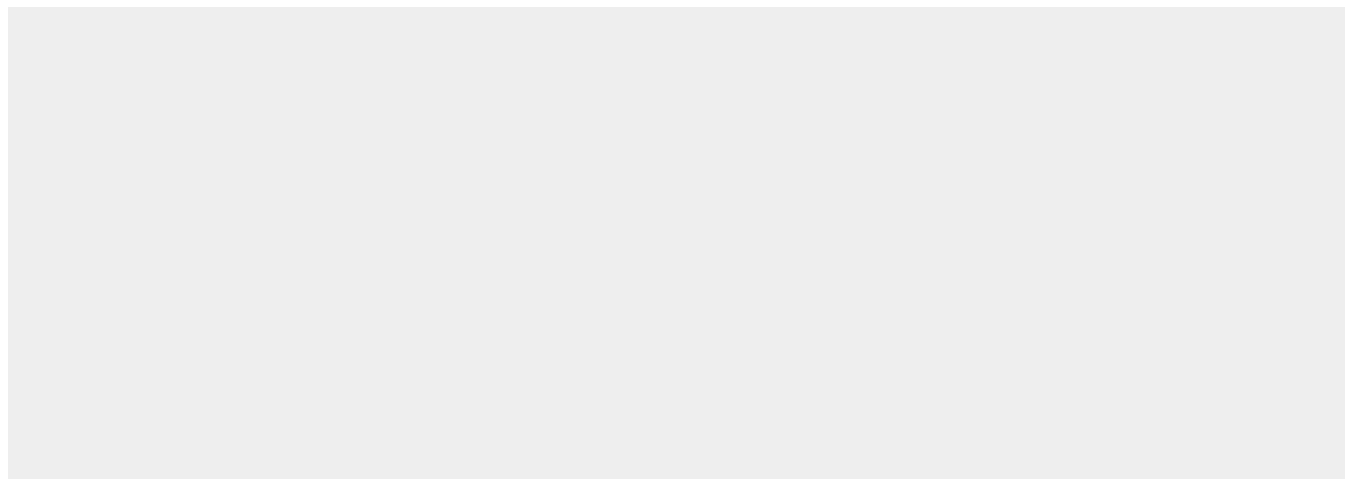
Tissue Location

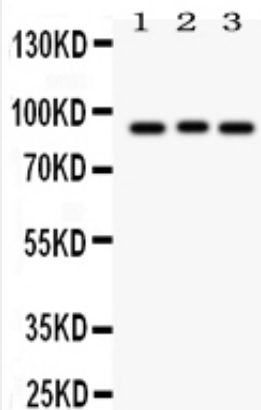
Expressed in the dorsal root ganglia.

Anti-Semaphorin 3A Picoband Antibody - Protocols

Provided below are standard protocols that you may find useful for product applications.

- [Western Blot](#)
- [Blocking Peptides](#)
- [Dot Blot](#)
- [Immunohistochemistry](#)
- [Immunofluorescence](#)
- [Immunoprecipitation](#)
- [Flow Cytometry](#)
- [Cell Culture](#)

Anti-Semaphorin 3A Picoband Antibody - Images



Anti- Semaphorin 3A Picoband antibody, ABO12044, Western blotting All lanes: Anti Semaphorin 3A (ABO12044) at 0.5ug/ml Lane 1: 293T Whole Cell Lysate at 40ug Lane 2: A549 Whole Cell Lysate at 40ug Lane 3: HELA Whole Cell Lysate at 40ug Predicted bind size: 89KD Observed bind size: 89KD

Anti-Semaphorin 3A Picoband Antibody - Background

SEMA3A is also known as COLL1, SEMA1 or SEMAL. This gene is a member of the semaphorin family and encodes a protein with an Ig-like C2-type (immunoglobulin-like) domain, a PSI domain and a Sema domain. This secreted protein can function as either a chemorepulsive agent, inhibiting axonal outgrowth, or as a chemoattractive agent, stimulating the growth of apical dendrites. In both cases, the protein is vital for normal neuronal pattern development. Increased expression of this protein is associated with schizophrenia and is seen in a variety of human tumor cell lines. Also, aberrant release of this protein is associated with the progression of Alzheimer's disease.