

Anti-P-Selectin Antibody
Catalog # ABO12054**Specification**

Anti-P-Selectin Antibody - Product Information

Application	IHC, WB
Primary Accession	P16109
Host	Rabbit
Reactivity	Human
Clonality	Polyclonal
Format	Lyophilized

Description

Rabbit IgG polyclonal antibody for P-selectin(SELP) detection. Tested with WB, IHC-P, ELISA in Human.

Reconstitution

Add 0.2ml of distilled water will yield a concentration of 500ug/ml.

Anti-P-Selectin Antibody - Additional Information

Gene ID 6403

Other Names

P-selectin, CD62 antigen-like family member P, Granule membrane protein 140, GMP-140, Leukocyte-endothelial cell adhesion molecule 3, LECAM3, Platelet activation dependent granule-external membrane protein, PADGEM, CD62P, SELP, GMRP, GRMP

Calculated MW

90834 MW KDa

Application Details

ELISA , 0.1-0.5 µg/ml, Human, -
Immunohistochemistry(Paraffin-embedded Section), 0.5-1 µg/ml, Human, By Heat
Western blot, 0.1-0.5 µg/ml, Human

Subcellular Localization

Membrane; Single-pass type I membrane protein.

Tissue Specificity

Stored in the alpha-granules of platelets and Weibel-Palade bodies of endothelial cells. Upon cell activation by agonists, P-selectin is transported rapidly to the cell surface.

Protein Name

P-selectin

Contents

Each vial contains 5mg BSA, 0.9mg NaCl, 0.2mg Na₂HPO₄, 0.05mg Na₃.

Immunogen

E.coli-derived human CD62P recombinant protein (Position: W42-G271). Human CD62P shares

75.2% and 75.7% amino acid (aa) sequence identity with mouse and rat CD62P, respectively.

Purification

Immunogen affinity purified.

Cross Reactivity

No cross reactivity with other proteins.

Storage

At -20°C for one year. After reconstitution, at 4°C for one month. It can also be aliquotted and stored frozen at -20°C for a longer time. Avoid repeated freezing and thawing.

Sequence Similarities

Belongs to the selectin/LECAM family.

Anti-P-Selectin Antibody - Protein Information

Name SELP

Synonyms GMRP, GRMP

Function

Ca(2+)-dependent receptor for myeloid cells that binds to carbohydrates on neutrophils and monocytes. Mediates the interaction of activated endothelial cells or platelets with leukocytes. The ligand recognized is sialyl-Lewis X. Mediates rapid rolling of leukocyte rolling over vascular surfaces during the initial steps in inflammation through interaction with SELPLG.

Cellular Location

Cell membrane; Single-pass type I membrane protein

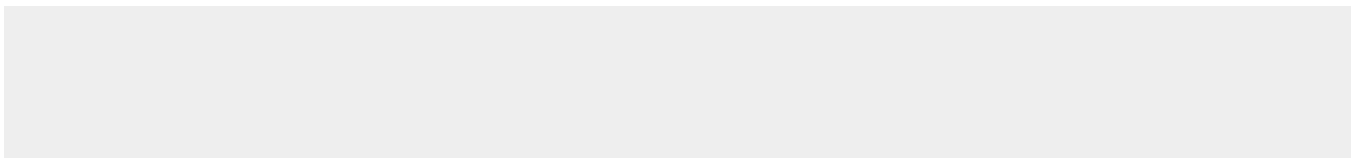
Tissue Location

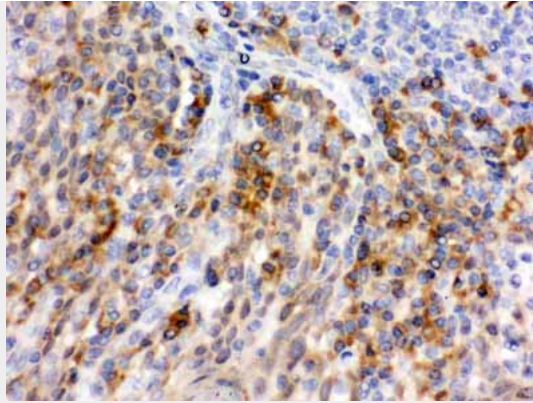
Stored in the alpha-granules of platelets and Weibel-Palade bodies of endothelial cells. Upon cell activation by agonists, P-selectin is transported rapidly to the cell surface

Anti-P-Selectin Antibody - Protocols

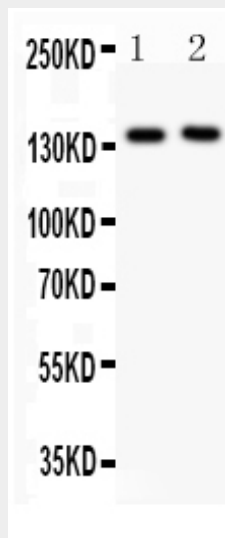
Provided below are standard protocols that you may find useful for product applications.

- [Western Blot](#)
- [Blocking Peptides](#)
- [Dot Blot](#)
- [Immunohistochemistry](#)
- [Immunofluorescence](#)
- [Immunoprecipitation](#)
- [Flow Cytometry](#)
- [Cell Culture](#)

Anti-P-Selectin Antibody - Images



Anti- CD62P Picoband antibody, ABO12054, IHC(P)IHC(P): Human Tonsil Tissue



Anti- CD62P Picoband antibody, ABO12054, Western blottingAll lanes: Anti CD62P (ABO12054) at 0.5ug/mlLane 1: A549 Whole Cell Lysate at 40ugLane 2: K562 Whole Cell Lysate at 40ugPredicted bind size: 91KDObserved bind size: 140KD

Anti-P-Selectin Antibody - Background

CD62P is also known as SELP or P-selectin. This gene encodes a 140 kDa protein that is stored in the alpha-granules of platelets and Weibel-Palade bodies of endothelial cells. This protein redistributes to the plasma membrane during platelet activation and degranulation and mediates the interaction of activated endothelial cells or platelets with leukocytes. The membrane protein is a calcium-dependent receptor that binds to sialylated forms of Lewis blood group carbohydrate antigens on neutrophils and monocytes. Alternative splice variants may occur but are not well documented.