

Anti-HLA A Picoband Antibody
Catalog # ABO12067**Specification**

Anti-HLA A Picoband Antibody - Product Information

Application	WB, IHC
Primary Accession	P01892
Host	Rabbit
Reactivity	Human, Mouse, Rat
Clonality	Polyclonal
Format	Lyophilized

Description

Rabbit IgG polyclonal antibody for HLA class I histocompatibility antigen, A-2 alpha chain(HLA-A) detection. Tested with WB, IHC-P in Human;Mouse;Rat.

Reconstitution

Add 0.2ml of distilled water will yield a concentration of 500ug/ml.

Anti-HLA A Picoband Antibody - Additional Information**Other Names**

HLA class I histocompatibility antigen, A-2 alpha chain, MHC class I antigen A*2, HLA-A, HLAA

Calculated MW

40922 MW KDa

Application Details

Immunohistochemistry(Paraffin-embedded Section), 0.5-1 µg/ml, Human, Rat, By Heat
Western blot, 0.1-0.5 µg/ml, Human, Mouse

Subcellular Localization

Membrane; Single-pass type I membrane protein.

Protein Name

HLA class I histocompatibility antigen, A-2 alpha chain

Contents

Each vial contains 5mg BSA, 0.9mg NaCl, 0.2mg Na₂HPO₄, 0.05mg Na₃.

Immunogen

A synthetic peptide corresponding to a sequence at the N-terminus of human HLA A (82-106aa EYWDGETRKVKAHSQTHRVDLGTLR).

Purification

Immunogen affinity purified.

Cross Reactivity

No cross reactivity with other proteins.

Storage

At -20°C for one year. After reconstitution, at 4°C for one month. It can also be aliquotted and stored frozen at -20°C for a longer time. Avoid repeated freezing and thawing.

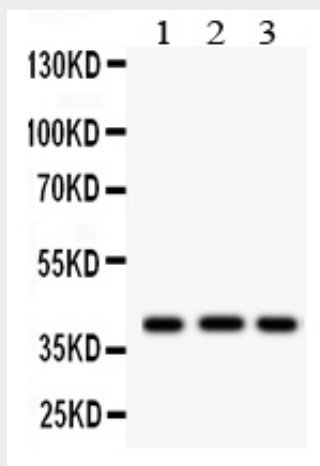
Sequence Similarities

Belongs to the MHC class I family.

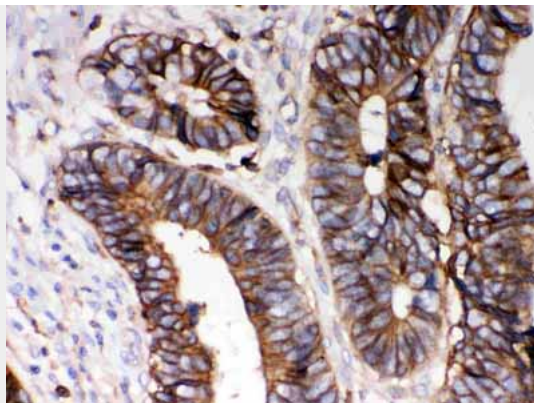
Anti-HLA A Picoband Antibody - Protein Information**Anti-HLA A Picoband Antibody - Protocols**

Provided below are standard protocols that you may find useful for product applications.

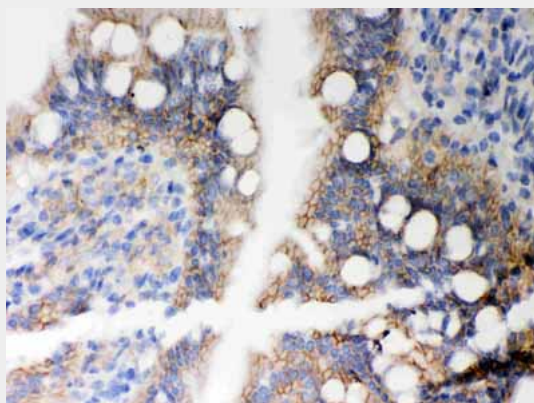
- [Western Blot](#)
- [Blocking Peptides](#)
- [Dot Blot](#)
- [Immunohistochemistry](#)
- [Immunofluorescence](#)
- [Immunoprecipitation](#)
- [Flow Cytometry](#)
- [Cell Culture](#)

Anti-HLA A Picoband Antibody - Images

Anti- HLA-A Picoband antibody, ABO12067, Western blotting All lanes: Anti HLA-A (ABO12067) at 0.5ug/ml
Lane 1: U87 Whole Cell Lysate at 40ug
Lane 2: HEPG2 Whole Cell Lysate at 40ug
Lane 3: Mouse Brain Tissue Lysate at 50ug
Predicted bind size: 41KD
Observed bind size: 41KD



Anti- HLA-A Picoband antibody, ABO12067,IHC(P)IHC(P): Human Intestinal Cancer Tissue



Anti- HLA-A Picoband antibody, ABO12067,IHC(P)IHC(P): Rat Intestine Tissue

Anti-HLA A Picoband Antibody - Background

HLA-A, namely HLA A, is a group of human leukocyte antigens (HLA) that are coded for by the HLA-A locus, which is located at human chromosome 6p21.3. HLA is simply the major histocompatibility complex (MHC) specific to humans. HLA-A is one of three major types of human MHC class I cell surface receptors. The others are HLA-B and HLA-C. And it is critical to the cytotoxic t-cell controlled immune response to viruses and other intracellular pathogens. Because each HLA-A gene has a high affinity for slightly different peptides, certain HLA-As are associated with increased risk, more rapid progression, and/or increased severity of many diseases. For similar reasons, HLA-A matching is essential to successful tissue transplants.