

**Anti-L-Selectin Antibody**  
**Catalog # ABO12080****Specification**

---

**Anti-L-Selectin Antibody - Product Information**

Application	WB, IHC-P, E
Primary Accession	<a href="#">P14151</a>
Host	Rabbit
Reactivity	Human, Mouse, Rat
Clonality	Polyclonal
Format	Lyophilized

**Description**

Rabbit IgG polyclonal antibody for L-selectin(SELL) detection. Tested with WB, IHC-P, ELISA in Human;Mouse;Rat.

**Reconstitution**

Add 0.2ml of distilled water will yield a concentration of 500ug/ml.

**Anti-L-Selectin Antibody - Additional Information**

**Gene ID** 6402

**Other Names**

L-selectin, CD62 antigen-like family member L, Leukocyte adhesion molecule 1, LAM-1, Leukocyte surface antigen Leu-8, Leukocyte-endothelial cell adhesion molecule 1, LECAM1, Lymph node homing receptor, TQ1, gp90-MEL, CD62L, SELL, LNHR, LYAM1

**Calculated MW**

L-selectin;CD62 antigen-like family member L;Leukocyte adhesion molecule 1;LAM-1;Leukocyte surface antigen Leu-8;Leukocyte-endothelial cell adhesion molecule 1;LECAM1;Lymph node homing receptor;TQ1;gp90-MEL;CD62L;SELL;LNHR, LYAM1; KDa

**Application Details**

Immunohistochemistry(Paraffin-embedded Section), 0.5-1 µg/ml, Human, By Heat<br> <br>ELISA , 0.1-0.5 µg/ml, Human, -<br>Western blot, 0.1-0.5 µg/ml, Human, Mouse, Rat <br>

**Subcellular Localization**

42187 MW

**Tissue Specificity**

Cell surface adhesion protein. Mediates the adherence of lymphocytes to endothelial cells of high endothelial venules in peripheral lymph nodes. Promotes initial tethering and rolling of leukocytes in endothelia. .

**Source**

Membrane; Single-pass type I membrane protein.

**Protein Name**

Expressed in B-cell lines and T-lymphocytes. .

**Contents**

Each vial contains 5mg BSA, 0.9mg NaCl, 0.2mg Na<sub>2</sub>HPO<sub>4</sub>, 0.05mg NaN<sub>3</sub>.

**Immunogen**

E. coli-derived human L-selectin recombinant protein (Position: W39-Y372). Human L-selectin shares 77.5 % and 78.7 % amino acid (aa) sequence identity with mouse and rat L-selectin, respectively.

**Purification**

Immunogen affinity purified.

**Cross Reactivity**

No cross reactivity with other proteins.

**Storage**

**At -20°C for one year. After reconstitution, at 4°C for one month. It can also be aliquotted and stored frozen at -20°C for a longer time. Avoid repeated freezing and thawing.**

**Sequence Similarities**

L-selectin

**Anti-L-Selectin Antibody - Protein Information**

**Name** SELL

**Synonyms** LNHR, LYAM1

**Function**

Calcium-dependent lectin that mediates cell adhesion by binding to glycoproteins on neighboring cells (PubMed: [12403782](http://www.uniprot.org/citations/12403782), PubMed: [28011641](http://www.uniprot.org/citations/28011641), PubMed: [28489325](http://www.uniprot.org/citations/28489325)). Mediates the adherence of lymphocytes to endothelial cells of high endothelial venules in peripheral lymph nodes. Promotes initial tethering and rolling of leukocytes in endothelia (PubMed: [12403782](http://www.uniprot.org/citations/12403782), PubMed: [28011641](http://www.uniprot.org/citations/28011641)).

**Cellular Location**

Cell membrane; Single-pass type I membrane protein

**Tissue Location**

Expressed in B-cell lines and T-lymphocytes.

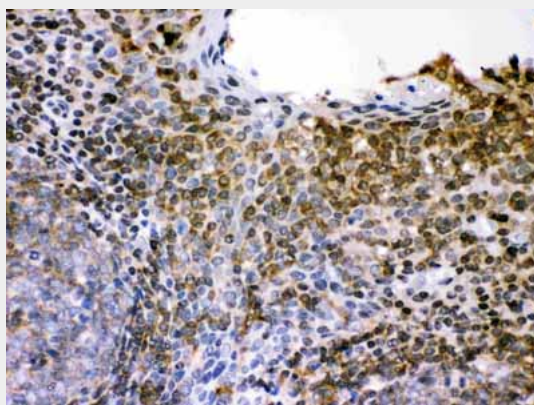
**Anti-L-Selectin Antibody - Protocols**

Provided below are standard protocols that you may find useful for product applications.

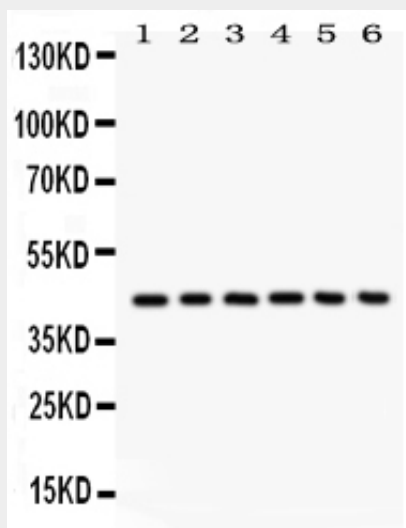
- [Western Blot](#)
- [Blocking Peptides](#)
- [Dot Blot](#)
- [Immunohistochemistry](#)

- [Immunofluorescence](#)
- [Immunoprecipitation](#)
- [Flow Cytometry](#)
- [Cell Culture](#)

### Anti-L-Selectin Antibody - Images



Anti- L-selectin Picoband antibody, ABO12080, IHC(P)IHC(P): Human Tonsil Tissue



Anti- L-selectin Picoband antibody, ABO12080, Western blotting  
All lanes: Anti L-selectin (ABO12080) at 0.5ug/ml  
Lane 1: Human Placenta Tissue Lysate at 50ug  
Lane 2: JURKAT Whole Cell Lysate at 40ug  
Lane 3: CEM Whole Cell Lysate at 40ug  
Lane 4: HL60 Whole Cell Lysate at 40ug  
Lane 5: Rat Spleen Tissue Lysate at 50ug  
Lane 6: Mouse Spleen Tissue Lysate at 50ug  
Predicted bind size: 42KD  
Observed bind size: 42KD

### Anti-L-Selectin Antibody - Background

CD62L, also known as L-selectin, is a cell adhesion molecule found on leukocytes. It belongs to the selectin family of proteins, which recognize sialylated carbohydrate groups. It is cleaved by ADAM17. SELL (L-selectin) is a cell surface component that is a member of a family of adhesion/homing receptors which play important roles in leukocyte-endothelial cell interactions. The molecule is composed of multiple domains: one homologous to lectins, one to epidermal growth factor, and two to the consensus repeat units found in C3/C4 binding proteins. L-selectin acts as a homing receptor" for leukocytes to enter secondary lymphoid tissues via high endothelial venules. Ligands present on endothelial cells will bind to leukocyte expressing L-selectin