

Anti-ABI1 Picoband Antibody
Catalog # ABO12106**Specification**

Anti-ABI1 Picoband Antibody - Product Information

| | |
|-------------------|------------------------|
| Application | WB, IHC-P |
| Primary Accession | Q8IZP0 |
| Host | Rabbit |
| Reactivity | Human, Mouse, Rat |
| Clonality | Polyclonal |
| Format | Lyophilized |

Description

Rabbit IgG polyclonal antibody for Abl interactor 1(ABI1) detection. Tested with WB, IHC-P in Human;Mouse;Rat.

Reconstitution

Add 0.2ml of distilled water will yield a concentration of 500ug/ml.

Anti-ABI1 Picoband Antibody - Additional Information

Gene ID 10006

Other Names

Abl interactor 1, Abelson interactor 1, Abi-1, Abl-binding protein 4, AblBP4, Eps8 SH3 domain-binding protein, Eps8-binding protein, Nap1-binding protein, Nap1BP, Spectrin SH3 domain-binding protein 1, e3B1, ABI1, SSH3BP1

Calculated MW

55081 MW KDa

Application Details

Immunohistochemistry(Paraffin-embedded Section), 0.5-1 µg/ml, Mouse, Rat, Human , By Heat

Western blot, 0.1-0.5 µg/ml, Human, Mouse, Rat

Subcellular Localization

Cytoplasm . Nucleus . Cell projection, lamellipodium . Cell projection, filopodium . Cell projection, growth cone . Cell junction, synapse, postsynaptic cell membrane, postsynaptic density . Cytoplasm, cytoskeleton . Localized to protruding lamellipodia and filopodia tips. Also localized to neuronal growth cones and synaptosomes. May shuttle from the postsynaptic densities to the nucleus (By similarity). .

Tissue Specificity

Widely expressed, with highest expression in brain. .

Protein Name

Abl interactor 1

Contents

Each vial contains 5mg BSA, 0.9mg NaCl, 0.2mg Na2HPO4, 0.05mg NaN3.

Immunogen

A synthetic peptide corresponding to a sequence at the N-terminus of human ABI1 (151-175aa HGVKWLKAKHGNQPARTGTLRTN), identical to the related mouse and rat sequences.

Purification

Immunogen affinity purified.

Cross Reactivity

No cross reactivity with other proteins

Storage

At -20°C for one year. After reconstitution, at 4°C for one month. It can also be aliquotted and stored frozen at -20°C for a longer time. Avoid repeated freezing and thawing.

Sequence Similarities

Belongs to the ABI family.

Anti-ABI1 Picoband Antibody - Protein Information

Name ABI1 ([HGNC:11320](#))

Synonyms SSH3BP1

Function

May act in negative regulation of cell growth and transformation by interacting with nonreceptor tyrosine kinases ABL1 and/or ABL2. May play a role in regulation of EGF-induced Erk pathway activation. Involved in cytoskeletal reorganization and EGFR signaling. Together with EPS8 participates in transduction of signals from Ras to Rac. In vitro, a trimeric complex of ABI1, EPS8 and SOS1 exhibits Rac specific guanine nucleotide exchange factor (GEF) activity and ABI1 seems to act as an adapter in the complex. Regulates ABL1/c-Abl- mediated phosphorylation of ENAH. Recruits WASF1 to lamellipodia and there seems to regulate WASF1 protein level. In brain, seems to regulate the dendritic outgrowth and branching as well as to determine the shape and number of synaptic contacts of developing neurons.

Cellular Location

Cytoplasm. Nucleus. Cell projection, lamellipodium. Cell projection, filopodium. Cell projection, growth cone Postsynaptic density. Cytoplasm, cytoskeleton. Note=Localized to protruding lamellipodia and filopodia tips. Also localized to neuronal growth cones and synaptosomes. May shuttle from the postsynaptic densities to the nucleus (By similarity)

Tissue Location

Widely expressed, with highest expression in brain.

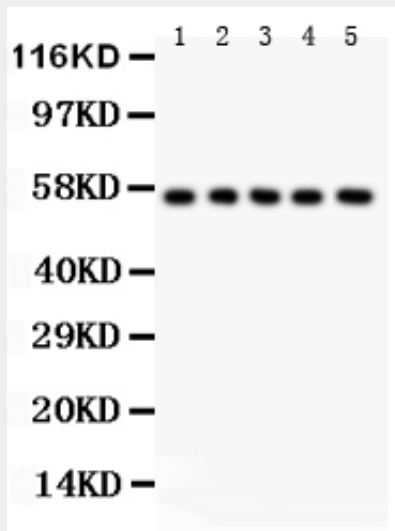
Anti-ABI1 Picoband Antibody - Protocols

Provided below are standard protocols that you may find useful for product applications.

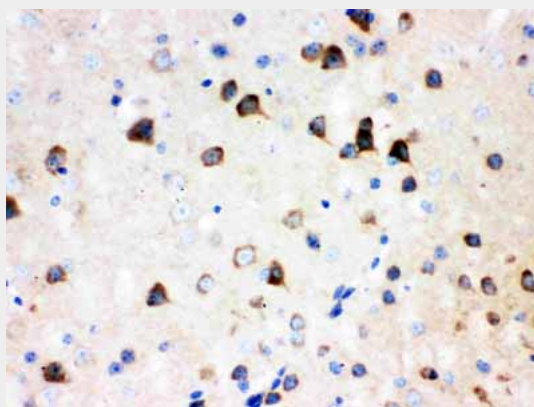
- [Western Blot](#)
- [Blocking Peptides](#)
- [Dot Blot](#)
- [Immunohistochemistry](#)
- [Immunofluorescence](#)

- [Immunoprecipitation](#)
- [Flow Cytometry](#)
- [Cell Culture](#)

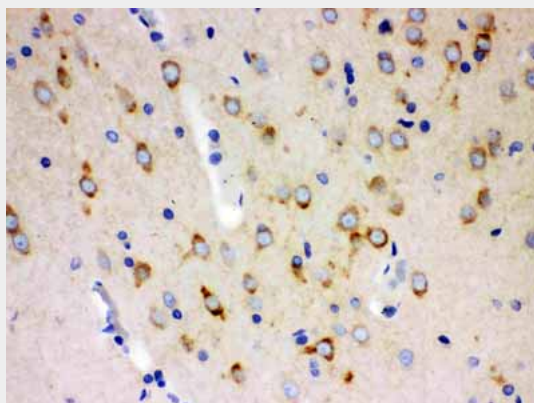
Anti-ABI1 Picoband Antibody - Images



Anti- ABI1 Picoband antibody, ABO12106, Western blotting
All lanes: Anti ABI1 (ABO12106) at 0.5ug/ml
Lane 1: Rat Liver Tissue Lysate at 50ug
Lane 2: Rat Testis Tissue Lysate at 50ug
Lane 3: HELA Whole Cell Lysate at 40ug
Lane 4: RH35 Whole Cell Lysate at 40ug
Lane 5: HEPA Whole Cell Lysate at 40ug
Predicted bind size: 55KDa
Observed bind size: 55KDa



Anti- ABI1 Picoband antibody, ABO12106, IHC(P)
IHC(P): Mouse Brain Tissue



Anti- SSH3BP1 Picoband antibody, ABO12106, IHC(P)IHC(P): Rat Brain Tissue

Anti-ABI1 Picoband Antibody - Background

SSH3BP1 is also known as ABI1. ABI1 is a human homolog of mouse Abl-interactor-1 (Abi1), mapped on 10p11.2. ABI1 participates in the transduction of signals from Ras to Rac by regulating Rac-specific guanine nucleotide exchange factor (GEF) activities. It dramatically promoted ABL1-mediated tyrosine phosphorylation of MENA, but not of other substrates. Abi-1 regulates c-Abl-mediated phosphorylation of Mena by interacting with both proteins. ABI1 plays a role in the leukemogenesis by translocating to MLL.