

Anti-CTBP2 Picoband Antibody
Catalog # ABO12116**Specification**

Anti-CTBP2 Picoband Antibody - Product Information

Application	WB, IHC-P
Primary Accession	P56545
Host	Rabbit
Reactivity	Human, Mouse, Rat
Clonality	Polyclonal
Format	Lyophilized

Description

Rabbit IgG polyclonal antibody for C-terminal-binding protein 2(CTBP2) detection. Tested with WB, IHC-P in Human;Mouse;Rat.

Reconstitution

Add 0.2ml of distilled water will yield a concentration of 500ug/ml.

Anti-CTBP2 Picoband Antibody - Additional Information

Gene ID 1488

Other Names

C-terminal-binding protein 2, CtBP2, CTBP2

Calculated MW

48945 MW KDa

Application Details

Immunohistochemistry(Paraffin-embedded Section), 0.5-1 µg/ml, Human, Mouse, Rat, By Heat
Western blot, 0.1-0.5 µg/ml, Human

Subcellular Localization

Nucleus . Cell junction, synapse .

Tissue Specificity

Ubiquitous. Highest levels in heart, skeletal muscle, and pancreas.

Protein Name

C-terminal-binding protein 2

Contents

Each vial contains 5mg BSA, 0.9mg NaCl, 0.2mg Na₂HPO₄, 0.05mg NaN₃.

Immunogen

E.coli-derived human CTBP2 recombinant protein (Position: H321-Q445). Human CTBP2 shares 99.2% and 98.4% amino acid (aa) sequence identity with mouse and rat CTBP2, respectively.

Purification

Immunogen affinity purified.

Cross Reactivity

No cross reactivity with other proteins

Storage

At -20°C for one year. After reconstitution, at 4°C for one month. It can also be aliquotted and stored frozen at -20°C for a longer time. Avoid repeated freezing and thawing.

Anti-CTBP2 Picoband Antibody - Protein Information

Name CTBP2

Function

Corepressor targeting diverse transcription regulators. Functions in brown adipose tissue (BAT) differentiation (By similarity).

Cellular Location

Nucleus. Synapse.

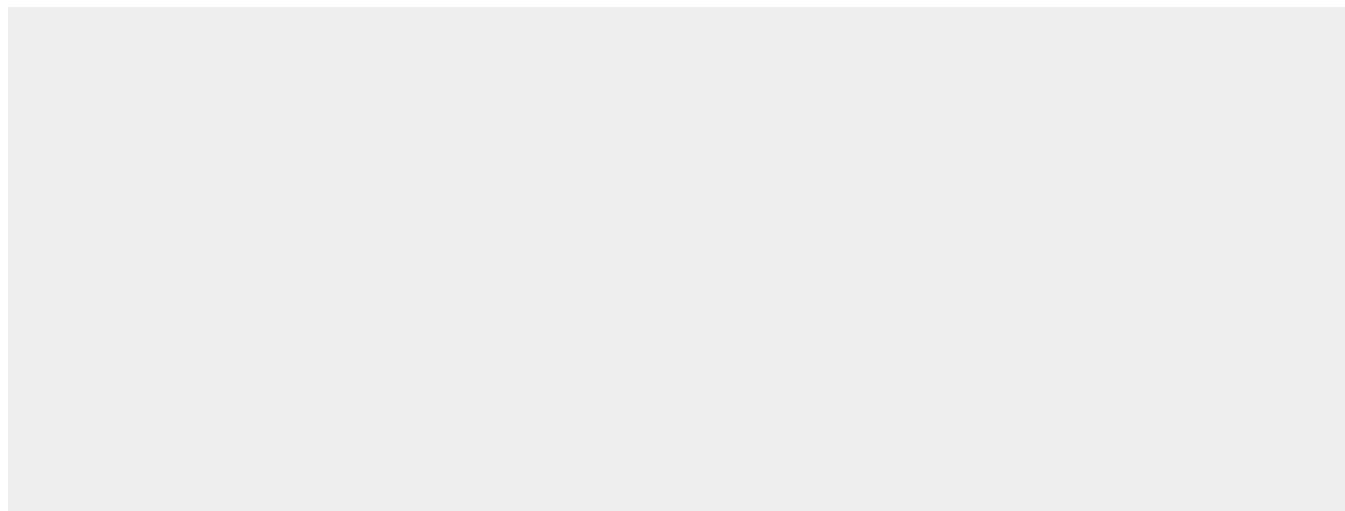
Tissue Location

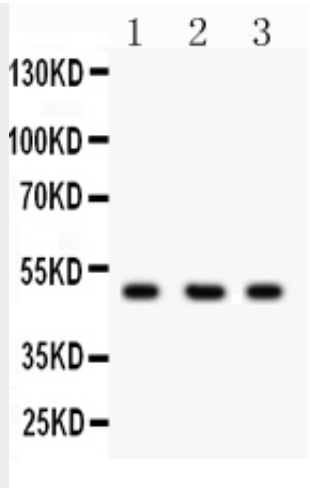
Ubiquitous. Highest levels in heart, skeletal muscle, and pancreas

Anti-CTBP2 Picoband Antibody - Protocols

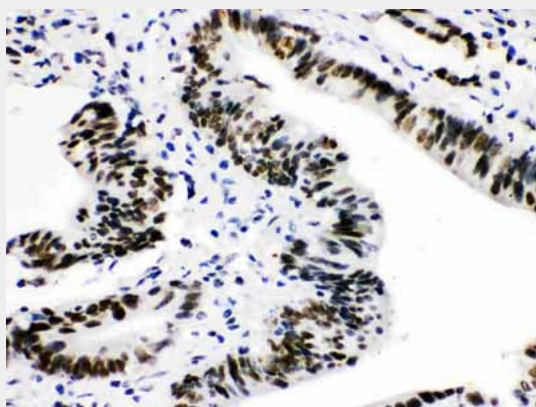
Provided below are standard protocols that you may find useful for product applications.

- [Western Blot](#)
- [Blocking Peptides](#)
- [Dot Blot](#)
- [Immunohistochemistry](#)
- [Immunofluorescence](#)
- [Immunoprecipitation](#)
- [Flow Cytometry](#)
- [Cell Culture](#)

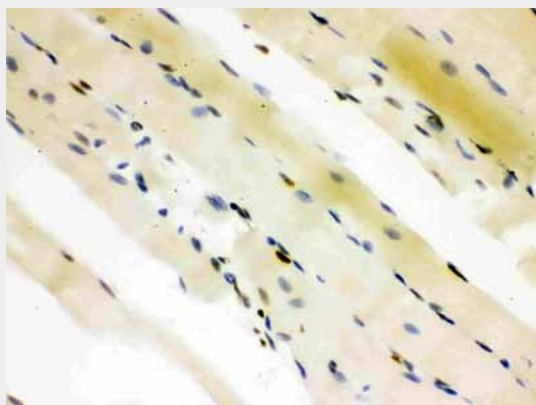
Anti-CTBP2 Picoband Antibody - Images



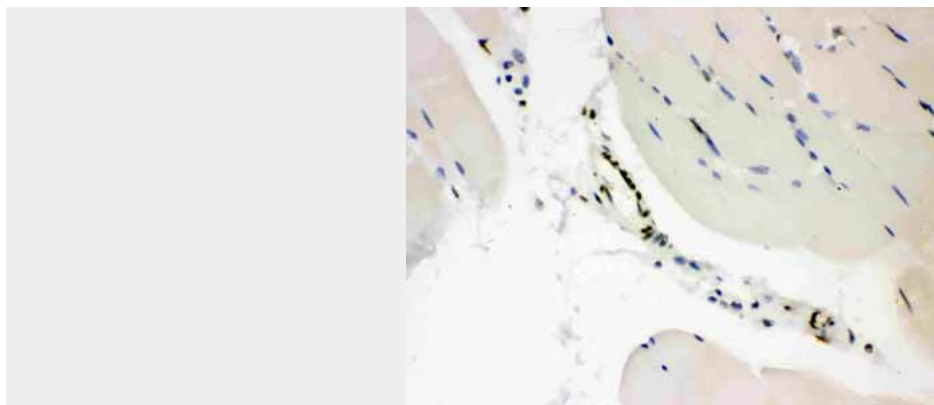
Anti-CTBP2 Picoband antibody, ABO12116, Western blottingAll lanes: Anti CTBP2 (ABO12116) at 0.5ug/mlLane 1: COLO320 Whole Cell Lysate at 40ugLane 2: 293T Whole Cell Lysate at 40ugLane 3: HELA Whole Cell Lysate at 40ugPredicted bind size: 49KDObserved bind size: 49KD



Anti-CTBP2 Picoband antibody, ABO12116, IHC(P)IHC(P): Human Intestinal Cancer Tissue



Anti-CTBP2 Picoband antibody, ABO12116, IHC(P)IHC(P): Rat Skeletal Muscle Tissue



Anti-CTBP2 Picoband antibody, ABO12116, IHC(P)IHC(P): Mouse Skeletal Muscle Tissue

Anti-CTBP2 Picoband Antibody - Background

The E1a region of group C adenoviruses encodes 2 nearly identical proteins that are largely responsible for the oncogenic properties of adenoviruses. The CTBP1 protein binds to the C-terminal half of these E1A proteins. It's predicted that CTBP2 is a 445-amino acid protein and it is 72% identical to CTBP1. The CTBP2 gene is mapped to chromosome 10q26.13. CTBP2 is a mammalian corepressor that targets diverse transcriptional regulators. It bounds the short medial portion of delta-EF1 containing the PLDLSL motif and it enhances transrepression activity of delta-EF1.