

Anti-SLC6A4 Picoband Antibody
Catalog # ABO12128**Specification**

Anti-SLC6A4 Picoband Antibody - Product Information

Application	WB, IHC
Primary Accession	P31645
Host	Rabbit
Reactivity	Human, Rat
Clonality	Polyclonal
Format	Lyophilized

Description

Rabbit IgG polyclonal antibody for Sodium-dependent serotonin transporter (SLC6A4) detection. Tested with WB, IHC-P in Human;Rat.

Reconstitution

Add 0.2ml of distilled water will yield a concentration of 500ug/ml.

Anti-SLC6A4 Picoband Antibody - Additional Information

Gene ID 6532

Other Names

Sodium-dependent serotonin transporter, SERT, 5HT transporter, 5HTT, Solute carrier family 6 member 4, SLC6A4, HTT, SERT

Calculated MW

70325 MW KDa

Application Details

Immunohistochemistry(Paraffin-embedded Section), 0.5-1 µg/ml, Human, Rat, By Heat

Western blot, 0.1-0.5 µg/ml, Human

Subcellular Localization

Cell membrane; Multi-pass membrane protein. Endomembrane system; Multi-pass membrane protein. Endosome membrane; Multi-pass membrane protein. Translocates from intracellular locations to the plasma membrane. Density of transporter molecules on the plasma membrane is itself regulated by serotonin.

Tissue Specificity

Expressed in platelets (at protein level). .

Protein Name

Sodium-dependent serotonin transporter

Contents

Each vial contains 5mg BSA, 0.9mg NaCl, 0.2mg Na₂HPO₄, 0.05mg NaN₃.

Immunogen

A synthetic peptide corresponding to a sequence at the N-terminus of human SLC6A4 (57-85aa DDTRHSIPATTTTLVAELHQGERETWGKK), different from the related mouse and rat sequences by six amino acids.

Purification

Immunogen affinity purified.

Cross Reactivity

No cross reactivity with other proteins

Storage

At -20°C for one year. After reconstitution, at 4°C for one month. It can also be aliquotted and stored frozen at -20°C for a longer time. Avoid repeated freezing and thawing.

Sequence Similarities

Belongs to the sodium:neurotransmitter symporter (SNF) (TC 2.A.22) family. SLC6A4 subfamily.

Anti-SLC6A4 Picoband Antibody - Protein Information

Name SLC6A4

Synonyms HTT, SERT

Function

Serotonin transporter that cotransports serotonin with one Na(+) ion in exchange for one K(+) ion and possibly one proton in an overall electroneutral transport cycle. Transports serotonin across the plasma membrane from the extracellular compartment to the cytosol thus limiting serotonin intercellular signaling (PubMed: 27756841, PubMed: 34851672, PubMed: 21730057, PubMed: 10407194, PubMed: 27049939, PubMed: 12869649). Essential for serotonin homeostasis in the central nervous system. In the developing somatosensory cortex, acts in glutamatergic neurons to control serotonin uptake and its trophic functions accounting for proper spatial organization of cortical neurons and elaboration of sensory circuits. In the mature cortex, acts primarily in brainstem raphe neurons to mediate serotonin uptake from the synaptic cleft back into the pre-synaptic terminal thus terminating serotonin signaling at the synapse (By similarity). Modulates mucosal serotonin levels in the gastrointestinal tract through uptake and clearance of serotonin in enterocytes. Required for enteric neurogenesis and gastrointestinal reflexes (By similarity). Regulates blood serotonin levels by ensuring rapid high affinity uptake of serotonin from plasma to platelets, where it is further stored in dense granules via vesicular monoamine transporters and then released upon stimulation (PubMed: 17506858, PubMed: 18317590). Mechanistically, the transport cycle starts with an outward-open conformation having Na1(+) and Cl(-) sites occupied. The binding of a second extracellular Na2(+) ion and serotonin substrate leads to structural changes to outward-occluded to inward-occluded to inward-open, where the Na2(+) ion and serotonin are released into the cytosol. Binding of intracellular K(+) ion induces conformational transitions to inward-occluded to outward-open and completes the cycle by releasing K(+) possibly together with a proton bound to Asp-98 into the extracellular compartment. Na1(+) and Cl(-) ions remain bound throughout the transport cycle (PubMed: 27756841, PubMed: 34851672).

target="_blank">34851672, PubMed:21730057, PubMed:10407194, PubMed:27049939, PubMed:12869649). Additionally, displays serotonin- induced channel-like conductance for monovalent cations, mainly Na(+) ions. The channel activity is uncoupled from the transport cycle and may contribute to the membrane resting potential or excitability (By similarity).

Cellular Location

Cell membrane; Multi-pass membrane protein. Endomembrane system; Multi-pass membrane protein. Endosome membrane; Multi- pass membrane protein. Synapse {ECO:0000250|UniProtKB:Q60857}. Cell junction, focal adhesion {ECO:0000250|UniProtKB:Q60857}. Cell projection, neuron projection {ECO:0000250|UniProtKB:Q60857}. Note=Could be part of recycling endosomes (PubMed:16870614). Density of transporter molecules on the plasma membrane is itself regulated by STX1A (By similarity). Density of transporter molecules on the plasma membrane is also regulated by serotonin (PubMed:17506858). Density of transporter molecules seems to be modulated by ITGAV:ITGB3 (By similarity) {ECO:0000250|UniProtKB:P31652, ECO:0000250|UniProtKB:Q60857, ECO:0000269|PubMed:16870614, ECO:0000269|PubMed:17506858}

Tissue Location

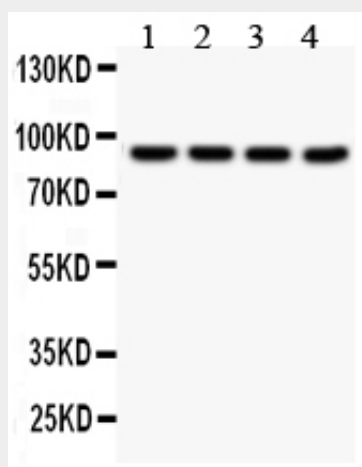
Expressed in platelets (at protein level).

Anti-SLC6A4 Picoband Antibody - Protocols

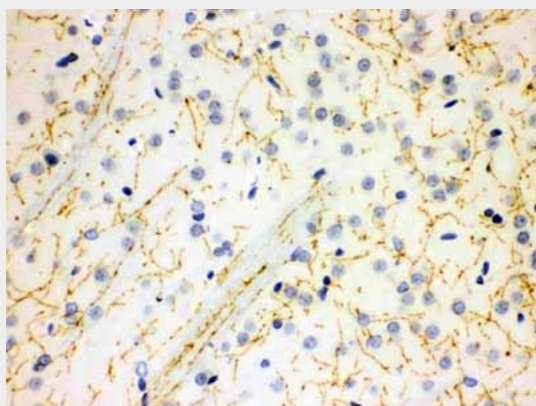
Provided below are standard protocols that you may find useful for product applications.

- [Western Blot](#)
- [Blocking Peptides](#)
- [Dot Blot](#)
- [Immunohistochemistry](#)
- [Immunofluorescence](#)
- [Immunoprecipitation](#)
- [Flow Cytometry](#)
- [Cell Culture](#)

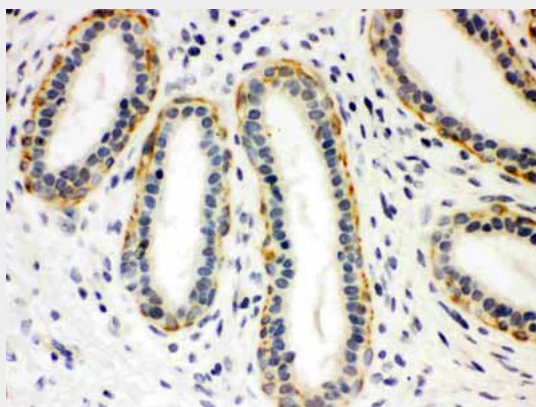
Anti-SLC6A4 Picoband Antibody - Images



Anti- SLC6A4 Picoband antibody, ABO12128, Western blotting All lanes: Anti SLC6A4 (ABO12128) at 0.5ug/ml Lane 1: A549 Whole Cell Lysate at 40ug Lane 2: MM231 Whole Cell Lysate at 40ug Lane 3: HELA Whole Cell Lysate at 40ug Lane 4: 22RV1 Whole Cell Lysate at 40ug Predicted bind size: 70KD Observed bind size: 90KD



Anti- SLC6A4 Picoband antibody, ABO12128, IHC(P) IHC(P): Rat Brain Tissue



Anti- SLC6A4 Picoband antibody, ABO12128, IHC(P) IHC(P): Human Mammary Cancer Tissue

Anti-SLC6A4 Picoband Antibody - Background

SLC6A4 (Solute carrier family 6, member 4), also known as SERT (serotonin transporter), is a monoamine transporter protein. The SLC6A4 gene spans 31 kb and contains 14 exons. This protein integral membrane protein transports the neurotransmitter serotonin from synaptic spaces into presynaptic neurons. This transport of serotonin by the SERT protein terminates the action of serotonin and recycles it in a sodium-dependent manner. This protein is the target of many antidepressant medications, including those of the SSRI class. It is a member of the sodium: neurotransmitter symporter family. A repeat length polymorphism in the promoter of this gene has been shown to affect the rate of serotonin uptake and may play a role in sudden infant death syndrome, aggressive behavior in Alzheimer disease patients, post-traumatic stress disorder and depression-susceptibility in people experiencing emotional trauma.