

**Anti-ATX2 Picoband Antibody**  
**Catalog # ABO12171****Specification**

---

**Anti-ATX2 Picoband Antibody - Product Information**

Application	WB, IHC-P
Primary Accession	<a href="#">Q99700</a>
Host	Rabbit
Reactivity	Human, Mouse, Rat
Clonality	Polyclonal
Format	Lyophilized

**Description**

Rabbit IgG polyclonal antibody for Ataxin-2(ATXN2) detection. Tested with WB, IHC-P in Human;Mouse;Rat.

**Reconstitution**

Add 0.2ml of distilled water will yield a concentration of 500ug/ml.

**Anti-ATX2 Picoband Antibody - Additional Information**

**Gene ID** 6311

**Other Names**

Ataxin-2, Spinocerebellar ataxia type 2 protein, Trinucleotide repeat-containing gene 13 protein, ATXN2, ATX2, SCA2, TNRC13

**Calculated MW**

140283 MW KDa

**Application Details**

Immunohistochemistry(Paraffin-embedded Section), 0.5-1 µg/ml, Human, Mouse, Rat, By Heat  
Western blot, 0.1-0.5 µg/ml, Mouse, Human

**Subcellular Localization**

Cytoplasm .

**Tissue Specificity**

Expressed in the brain, heart, liver, skeletal muscle, pancreas and placenta. Isoform 1 is predominant in the brain and spinal cord. Isoform 4 is more abundant in the cerebellum. In the brain, broadly expressed in the amygdala, caudate nucleus, corpus callosum, hippocampus, hypothalamus, substantia nigra, subthalamic nucleus and thalamus. .

**Protein Name**

Ataxin-2

**Contents**

Each vial contains 5mg BSA, 0.9mg NaCl, 0.2mg Na<sub>2</sub>HPO<sub>4</sub>, 0.05mg Na<sub>3</sub>.

**Immunogen**

A synthetic peptide corresponding to a sequence at the C-terminus of human ATX2 (1283-1313aa QSALQPIPVSTTAHFPYMTHTPSVQAHHQQQL), identical to the related mouse sequence.

**Purification**

Immunogen affinity purified.

**Cross Reactivity**

No cross reactivity with other proteins

**Storage**

**At -20°C for one year. After r°Constitution, at 4°C for one month. It°Can also be aliquotted and stored frozen at -20°C for a longer time.Avoid repeated freezing and thawing.**

**Anti-ATX2 Picoband Antibody - Protein Information**

**Name** ATXN2

**Synonyms** ATX2, SCA2, TNRC13

**Function**

Involved in EGFR trafficking, acting as negative regulator of endocytic EGFR internalization at the plasma membrane.

**Cellular Location**

Cytoplasm.

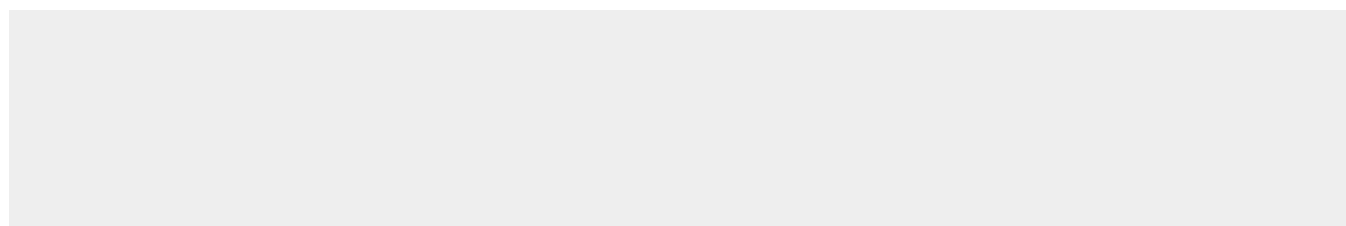
**Tissue Location**

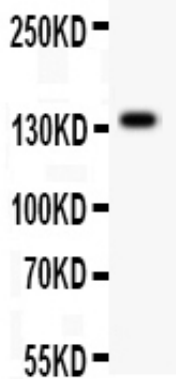
Expressed in the brain, heart, liver, skeletal muscle, pancreas and placenta. Isoform 1 is predominant in the brain and spinal cord. Isoform 4 is more abundant in the cerebellum. In the brain, broadly expressed in the amygdala, caudate nucleus, corpus callosum, hippocampus, hypothalamus, substantia nigra, subthalamic nucleus and thalamus.

**Anti-ATX2 Picoband Antibody - Protocols**

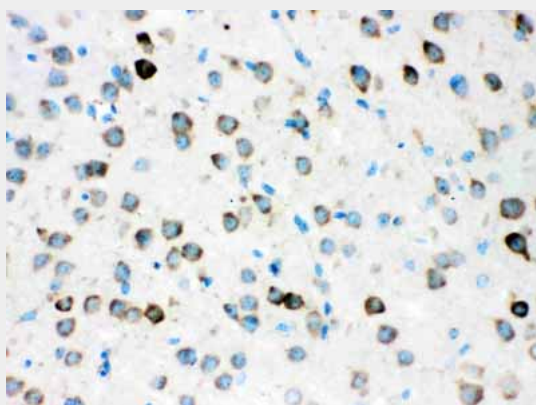
Provided below are standard protocols that you may find useful for product applications.

- [Western Blot](#)
- [Blocking Peptides](#)
- [Dot Blot](#)
- [Immunohistochemistry](#)
- [Immunofluorescence](#)
- [Immunoprecipitation](#)
- [Flow Cytometry](#)
- [Cell Culture](#)

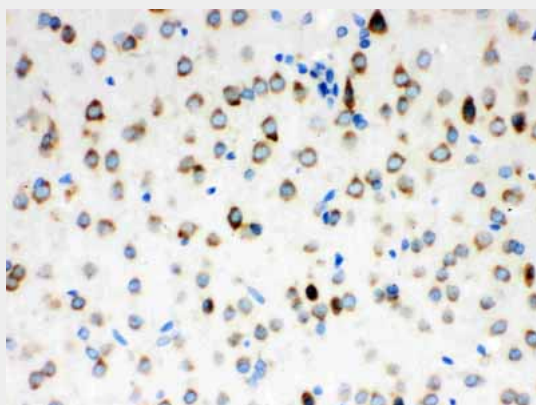
**Anti-ATX2 Picoband Antibody - Images**



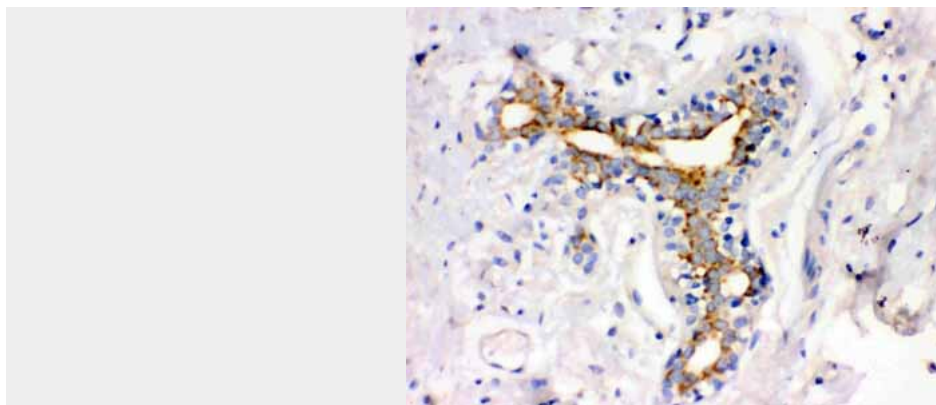
Anti- ATX2 Picoband antibody, ABO12171, Western blotting All lanes: Anti ATX2 (ABO12171) at 0.5ug/ml WB: Mouse Liver Tissue Lysate at 50ug Predicted bind size: 140KD Observed bind size: 140KD



Anti- ATX2 Picoband antibody, ABO12171, IHC(P) IHC(P): Mouse Brain Tissue



Anti- ATX2 Picoband antibody, ABO12171, IHC(P) IHC(P): Rat Brain Tissue



Anti- ATX2 Picoband antibody, ABO12171, IHC(P)IHC(P): Human Mammary Cancer Tissue

#### **Anti-ATX2 Picoband Antibody - Background**

Ataxin-2, the protein encoded by the ATXN2 gene, contains a polyglutamine tract, long expansions (greater than 33 repeats) of which result in spinocerebellar ataxia-2 (SCA2), an autosomal dominant form of olivopontocerebellar atrophy. The gene for spinocerebellar ataxia type 2 (SCA2) has been mapped to 12q24.1. Ataxin-2 associates with L- and T-plastin and that overexpression of ataxin-2 leads to accumulation of T-plastin in mammalian cells.