

Anti-PKLR Picoband Antibody
Catalog # ABO12187**Specification**

Anti-PKLR Picoband Antibody - Product Information

Application	WB, IHC-P
Primary Accession	P30613
Host	Rabbit
Reactivity	Human, Mouse, Rat
Clonality	Polyclonal
Format	Lyophilized

Description

Rabbit IgG polyclonal antibody for Pyruvate kinase PKLR(PKLR) detection. Tested with WB, IHC-P in Human;Mouse;Rat.

Reconstitution

Add 0.2ml of distilled water will yield a concentration of 500ug/ml.

Anti-PKLR Picoband Antibody - Additional Information

Gene ID 5313

Other Names

Pyruvate kinase PKLR, 2.7.1.40, Pyruvate kinase 1, Pyruvate kinase isozymes L/R, R-type/L-type pyruvate kinase, Red cell/liver pyruvate kinase, PKLR, PK1, PKL

Calculated MW

61830 MW KDa

Application Details

Immunohistochemistry(Paraffin-embedded Section), 0.5-1 µg/ml, Human, By Heat

Western blot, 0.1-0.5 µg/ml, Mouse, Rat, Human

Protein Name

Pyruvate kinase PKLR

Contents

Each vial contains 5mg BSA, 0.9mg NaCl, 0.2mg Na₂HPO₄, 0.05mg Na₃.

Immunogen

A synthetic peptide corresponding to a sequence at the C-terminus of human PKLR (522-552aa EAIWADDVDRRVQFGIESGKLRGFLRVGDLV), different from the related mouse sequence by one amino acid, and identical to the rat sequence.

Purification

Immunogen affinity purified.

Cross Reactivity

No cross reactivity with other proteins

Storage

At -20°C for one year. After reconstitution, at 4°C for one month. It can also be aliquotted and stored frozen at -20°C for a longer time. Avoid repeated freezing and thawing.

Sequence Similarities

Belongs to the pyruvate kinase family.

Anti-PKLR Picoband Antibody - Protein Information

Name PKLR

Synonyms PK1, PKL

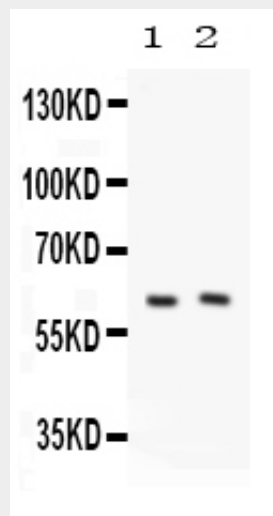
Function

Pyruvate kinase that catalyzes the conversion of phosphoenolpyruvate to pyruvate with the synthesis of ATP, and which plays a key role in glycolysis.

Anti-PKLR Picoband Antibody - Protocols

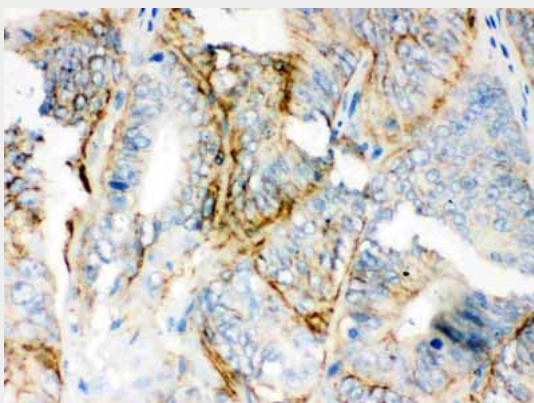
Provided below are standard protocols that you may find useful for product applications.

- [Western Blot](#)
- [Blocking Peptides](#)
- [Dot Blot](#)
- [Immunohistochemistry](#)
- [Immunofluorescence](#)
- [Immunoprecipitation](#)
- [Flow Cytometry](#)
- [Cell Culture](#)

Anti-PKLR Picoband Antibody - Images

Anti-PKLR Picoband antibody, ABO12187, Western blotting All lanes: Anti PKLR (ABO12187) at 0.5ug/ml
Lane 1: Rat Liver Tissue Lysate at 50ug
Lane 2: Mouse Liver Tissue Lysate at 50ug

50ug Predicted bind size: 62KD Observed bind size: 62KD



Anti-PKLR Picoband antibody, ABO12187, IHC(P) IHC(P): Human Intestinal Cancer Tissue

Anti-PKLR Picoband Antibody - Background

Pyruvate kinase isozymes R/L is an enzyme that in humans is encoded by the PKLR gene. It is mapped to 1q21. The protein encoded by this gene is a pyruvate kinase that catalyzes the transphosphorylation of phosphoenolpyruvate into pyruvate and ATP, which is the rate-limiting step of glycolysis. Defects in this enzyme, due to gene mutations or genetic variations, are the common cause of chronic hereditary nonspherocytic hemolytic anemia (CNSHA or HNSHA). Multiple transcript variants encoding different isoforms have been found for this gene.