

Anti-Cdc6 Picoband Antibody
Catalog # ABO12218**Specification**

Anti-Cdc6 Picoband Antibody - Product Information

| | |
|-------------------|------------------------|
| Application | WB, IHC-P |
| Primary Accession | Q99741 |
| Host | Rabbit |
| Reactivity | Human, Rat |
| Clonality | Polyclonal |
| Format | Lyophilized |

Description

Rabbit IgG polyclonal antibody for Cell division control protein 6 homolog(CDC6) detection. Tested with WB, IHC-P in Human;Rat.

Reconstitution

Add 0.2ml of distilled water will yield a concentration of 500ug/ml.

Anti-Cdc6 Picoband Antibody - Additional Information

Gene ID 990

Other Names

Cell division control protein 6 homolog, CDC6-related protein, Cdc18-related protein, HsCdc18, p62(cdc6), HsCDC6, CDC6, CDC18L

Calculated MW

62720 MW KDa

Application Details

Immunohistochemistry(Paraffin-embedded Section), 0.5-1 µg/ml, Human, Rat, By Heat
Western blot, 0.1-0.5 µg/ml, Human, Rat

Subcellular Localization

Nucleus . Cytoplasm . The protein is nuclear in G1 and cytoplasmic in S-phase cells.

Protein Name

Cell division control protein 6 homolog

Contents

Each vial contains 5mg BSA, 0.9mg NaCl, 0.2mg Na2HPO4, 0.05mg NaN3.

Immunogen

E.coli-derived human Cdc6 recombinant protein (Position: V147-A549). Human Cdc6 shares 87.3% amino acid (aa) sequence identity with mouse Cdc6.

Purification

Immunogen affinity purified.

Cross Reactivity

No cross reactivity with other proteins

Storage

At -20°C for one year. After reconstitution, at 4°C for one month. It can also be aliquotted and stored frozen at -20°C for a longer time. Avoid repeated freezing and thawing.

Sequence Similarities

Belongs to the CDC6/cdc18 family.

Anti-Cdc6 Picoband Antibody - Protein Information

Name CDC6

Synonyms CDC18L

Function

Involved in the initiation of DNA replication. Also participates in checkpoint controls that ensure DNA replication is completed before mitosis is initiated.

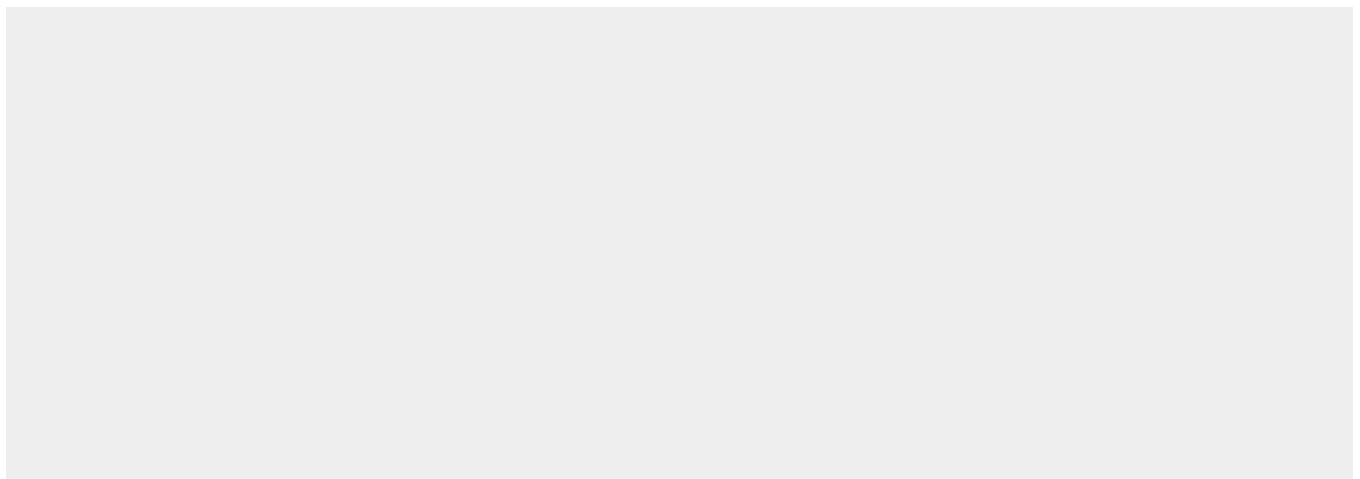
Cellular Location

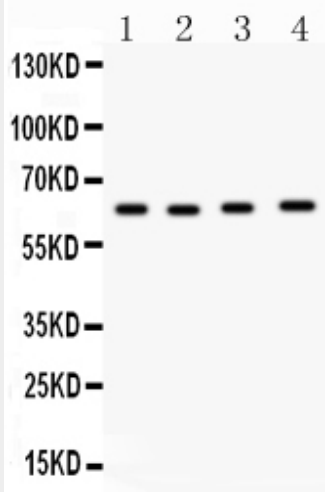
Nucleus. Cytoplasm Note=The protein is nuclear in G1 and cytoplasmic in S-phase cells (PubMed:9566895).

Anti-Cdc6 Picoband Antibody - Protocols

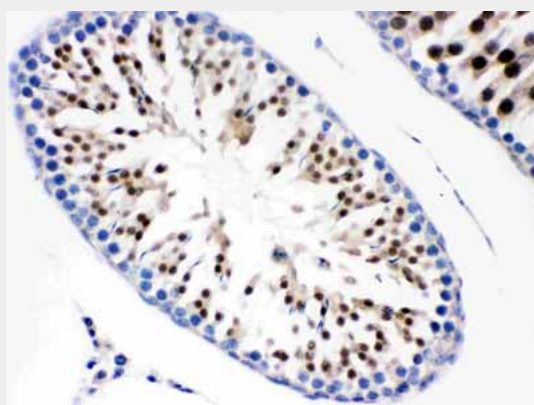
Provided below are standard protocols that you may find useful for product applications.

- [Western Blot](#)
- [Blocking Peptides](#)
- [Dot Blot](#)
- [Immunohistochemistry](#)
- [Immunofluorescence](#)
- [Immunoprecipitation](#)
- [Flow Cytometry](#)
- [Cell Culture](#)

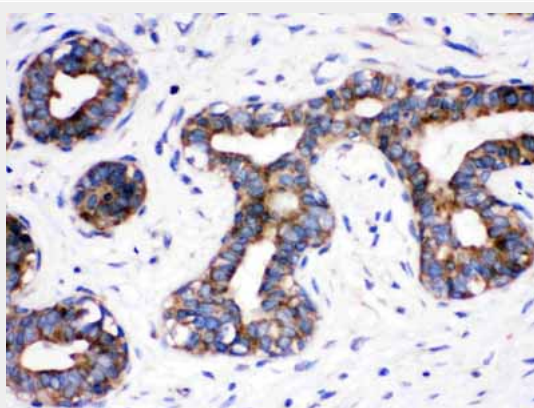
Anti-Cdc6 Picoband Antibody - Images



Anti- Cdc6 Picoband antibody, ABO12218, Western blotting All lanes: Anti Cdc6 (ABO12218) at 0.5ug/ml
Lane 1: Rat Brain Tissue Lysate at 50ug
Lane 2: JURKAT Whole Cell Lysate at 40ug
Lane 3: MM231 Whole Cell Lysate at 40ug
Lane 4: HT1080 Whole Cell Lysate at 40ug
Predicted bind size: 63KD
Observed bind size: 63KD



Anti- Cdc6 Picoband antibody, ABO12218, IHC(P) IHC(P): Rat Testis Tissue



Anti- Cdc6 Picoband antibody, ABO12218, IHC(P) IHC(P): Human Mammary Cancer Tissue

Anti-Cdc6 Picoband Antibody - Background

Cell division control protein 6 homolog, also called CDC18L or CDC6, is a protein that in humans is encoded by the CDC6 gene. By analysis of somatic cell hybrids and by fluorescence in situ hybridization, this gene is mapped to 17q21.2. The protein encoded by this gene is highly similar to

Saccharomyces cerevisiae Cdc6, a protein essential for the initiation of DNA replication. And this protein functions as a regulator at the early steps of DNA replication. It localizes in cell nucleus during cell cycle G1, but translocates to the cytoplasm at the start of S phase. The subcellular translocation of this protein during cell cycle is regulated through its phosphorylation by Cdk. Transcription of this protein was reported to be regulated in response to mitogenic signals through transcriptional control mechanism involving E2F proteins. This gene is involved in the initiation of DNA replication.