

Anti-Fetuin A Antibody
Catalog # ABO12254**Specification**

Anti-Fetuin A Antibody - Product Information

Application	WB, IHC-P, E
Primary Accession	P02765
Host	Rabbit
Reactivity	Human, Rat
Clonality	Polyclonal
Format	Lyophilized

Description

Rabbit IgG polyclonal antibody for Alpha-2-HS-glycoprotein(AHSG) detection. Tested with WB, IHC-P, ELISA in Human;Rat.

Reconstitution

Add 0.2ml of distilled water will yield a concentration of 500ug/ml.

Anti-Fetuin A Antibody - Additional Information

Gene ID 197

Other Names

Alpha-2-HS-glycoprotein, Alpha-2-Z-globulin, Ba-alpha-2-glycoprotein, Fetuin-A, Alpha-2-HS-glycoprotein chain A, Alpha-2-HS-glycoprotein chain B, AHSG, FETUA

Calculated MW

39325 MW KDa

Application Details

Immunohistochemistry(Paraffin-embedded Section), 0.5-1 µg/ml, Human, By Heat

ELISA , 0.1-0.5 µg/ml, Human, -
Western blot, 0.1-0.5 µg/ml, Human, Rat

Subcellular Localization

Secreted.

Tissue Specificity

Synthesized in liver and selectively concentrated in bone matrix. Secreted in plasma. It is also found in dentin in much higher quantities than other plasma proteins.

Protein Name

Alpha-2-HS-glycoprotein

Contents

Each vial contains 5mg BSA, 0.9mg NaCl, 0.2mg Na₂HPO₄, 0.05mg NaN₃.

Immunogen

A synthetic peptide corresponding to a sequence at the N-terminus of human Fetuin A (33-65aa DDPETEEAALVAIDYINQNLPGWKHTLNQIDE), different from the related mouse and rat sequences

by thirteen amino acids.

Purification

Immunogen affinity purified.

Cross Reactivity

No cross reactivity with other proteins

Storage

At -20°C for one year. After reconstitution, at 4°C for one month. It can also be aliquotted and stored frozen at -20°C for a longer time. Avoid repeated freezing and thawing.

Sequence Similarities

Belongs to the fetuin family.

Anti-Fetuin A Antibody - Protein Information

Name AHSG

Synonyms FETUA

Function

Promotes endocytosis, possesses opsonic properties and influences the mineral phase of bone. Shows affinity for calcium and barium ions.

Cellular Location

Secreted.

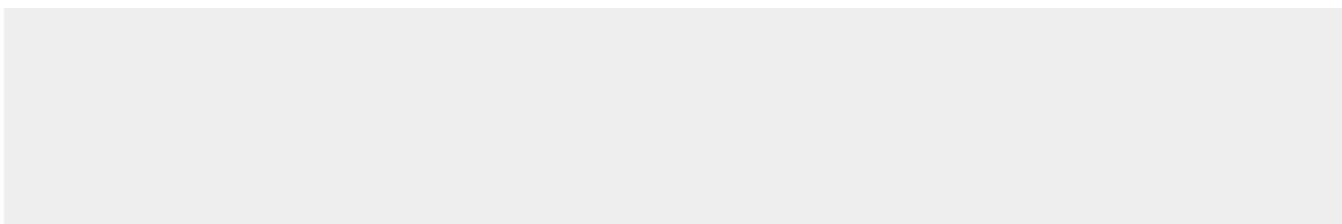
Tissue Location

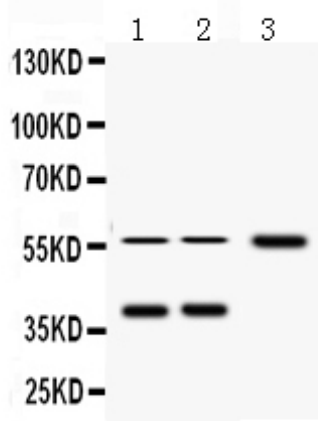
Synthesized in liver and selectively concentrated in bone matrix. Secreted in plasma. It is also found in dentin in much higher quantities than other plasma proteins

Anti-Fetuin A Antibody - Protocols

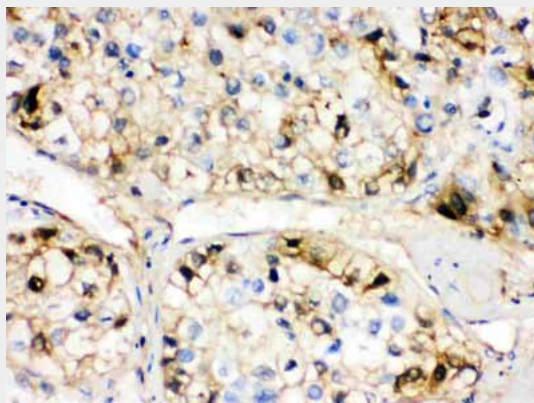
Provided below are standard protocols that you may find useful for product applications.

- [Western Blot](#)
- [Blocking Peptides](#)
- [Dot Blot](#)
- [Immunohistochemistry](#)
- [Immunofluorescence](#)
- [Immunoprecipitation](#)
- [Flow Cytometry](#)
- [Cell Culture](#)

Anti-Fetuin A Antibody - Images



Anti- Fetuin A Picoband antibody, ABO12254, Western blotting All lanes: Anti Fetuin A (ABO12254) at 0.5ug/ml
Lane 1: Rat Brain Tissue Lysate at 50ug
Lane 2: RH35 Whole Cell Lysate at 40ug
Lane 3: MCF-7 Whole Cell Lysate at 40ug
Predicted bind size: 39KD
Observed bind size: 39KD, 58KD



Anti- Fetuin A Picoband antibody, ABO12254, IHC(P)
IHC(P): Human Liver Cancer Tissue

Anti-Fetuin A Antibody - Background

Alpha-2-HS-glycoprotein (AHSG), also known as fetuin-A, is a protein that in humans is encoded by the AHSG gene. Fetuin-A belongs to the fetuin class of plasma binding proteins and is more abundant in fetal than adult blood. Its gene is mapped to 3q27. The protein is commonly present in the cortical plate of the immature cerebral cortex and bone marrow hemopoietic matrix. It is involved in several functions, such as endocytosis, brain development and the formation of bone tissue.