

**Anti-CCL4/MIP-1 beta Antibody**  
**Catalog # ABO12258****Specification**

---

**Anti-CCL4/MIP-1 beta Antibody - Product Information**

Application	WB, E
Primary Accession	<a href="#">P13236</a>
Host	Rabbit
Reactivity	Human
Clonality	Polyclonal
Format	Lyophilized

**Description**

Rabbit IgG polyclonal antibody for C-C motif chemokine 4(CCL4) detection. Tested with WB, ELISA in Human.

**Reconstitution**

Add 0.2ml of distilled water will yield a concentration of 500ug/ml.

**Anti-CCL4/MIP-1 beta Antibody - Additional Information**

**Gene ID** 388372;6351

**Other Names**

C-C motif chemokine 4, G-26 T-lymphocyte-secreted protein, HC21, Lymphocyte activation gene 1 protein, LAG-1, MIP-1-beta(1-69), Macrophage inflammatory protein 1-beta, MIP-1-beta, PAT 744, Protein H400, SIS-gamma, Small-inducible cytokine A4, T-cell activation protein 2, ACT-2, MIP-1-beta(3-69), CCL4, LAG1, MIP1B, SCYA4

**Calculated MW**

10212 MW KDa

**Application Details**

ELISA , 0.1-0.5 µg/ml, Human, -<br>Western blot, 0.1-0.5 µg/ml, Human<br>

**Subcellular Localization**

Secreted.

**Protein Name**

C-C motif chemokine 4

**Contents**

Each vial contains 5mg BSA, 0.9mg NaCl, 0.2mg Na<sub>2</sub>HPO<sub>4</sub>, 0.05mg Na<sub>3</sub>.

**Immunogen**

E. coli-derived human CCL4 recombinant protein (Position: A24-N92). Human CCL4 shares 76.8% and 79.7% amino acid (aa) sequence identity with mouse and rat CCL4, respectively.

**Purification**

Immunogen affinity purified.

**Cross Reactivity**

No cross reactivity with other proteins

**Storage**

**At -20°C for one year. After reconstitution, at 4°C for one month. It can also be aliquotted and stored frozen at -20°C for a longer time. Avoid repeated freezing and thawing.**

**Sequence Similarities**

Belongs to the intercrine beta (chemokine CC) family.

**Anti-CCL4/MIP-1 beta Antibody - Protein Information**

**Name** CCL4

**Synonyms** LAG1, MIP1B, SCYA4

**Function**

Monokine with inflammatory and chemokinetic properties. Binds to CCR5. One of the major HIV-suppressive factors produced by CD8+ T- cells. Recombinant MIP-1-beta induces a dose-dependent inhibition of different strains of HIV-1, HIV-2, and simian immunodeficiency virus (SIV). The processed form MIP-1-beta(3-69) retains the abilities to induce down-modulation of surface expression of the chemokine receptor CCR5 and to inhibit the CCR5-mediated entry of HIV-1 in T-cells. MIP-1- beta(3-69) is also a ligand for CCR1 and CCR2 isoform B.

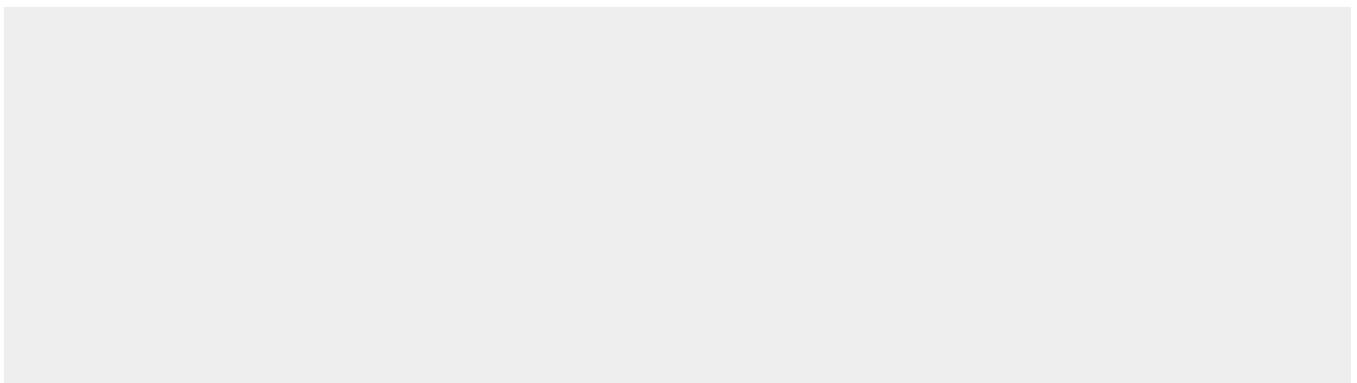
**Cellular Location**

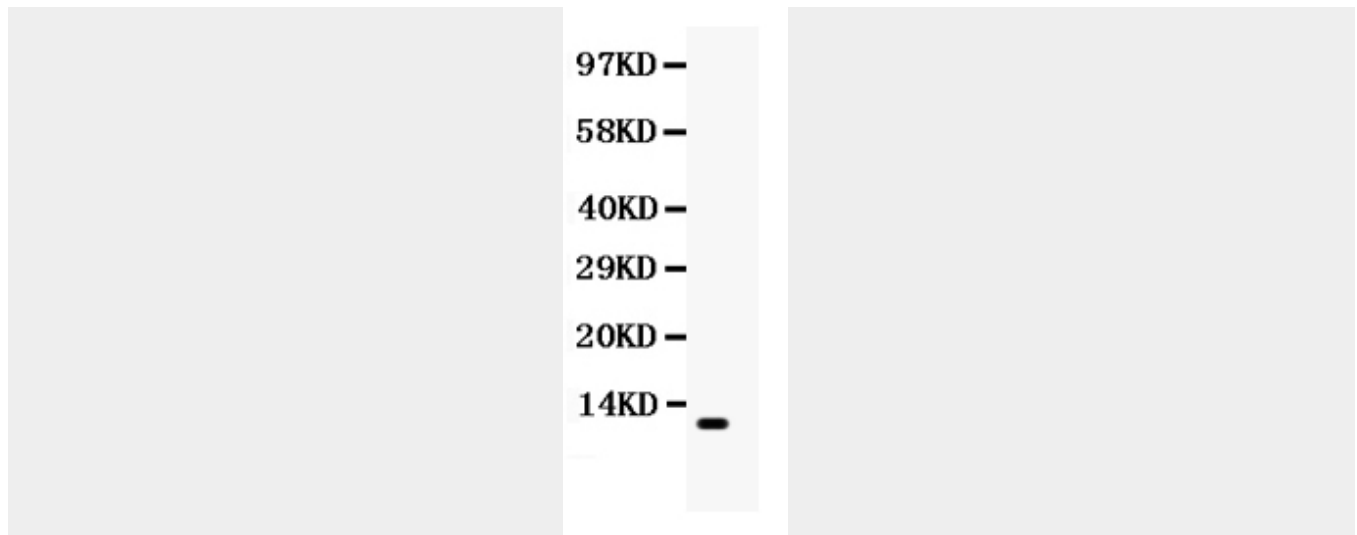
Secreted.

**Anti-CCL4/MIP-1 beta Antibody - Protocols**

Provided below are standard protocols that you may find useful for product applications.

- [Western Blot](#)
- [Blocking Peptides](#)
- [Dot Blot](#)
- [Immunohistochemistry](#)
- [Immunofluorescence](#)
- [Immunoprecipitation](#)
- [Flow Cytometry](#)
- [Cell Culture](#)

**Anti-CCL4/MIP-1 beta Antibody - Images**



Anti- CCL4 Picoband antibody, ABO12258, Western blottingAll lanes: Anti CCL4 (ABO12258) at 0.5ug/mlWB: HELA Whole Cell Lysate at 40ugPredicted bind size: 11KDObserved bind size: 11KD

#### **Anti-CCL4/MIP-1 beta Antibody - Background**

Chemokine(C-C motif) ligand 4, also known as CCL4, is a protein which in human is encoded by the CCL4 gene. By analysis of somatic cell hybrids and by in situ hybridization, the CCL4 gene was assigned to 17q21-q23. It is a CC chemokine with specificity for CCR5 receptors. And it is a chemoattractant for natural killer cells, monocytes and a variety of other immune cells. CCL4 is a major HIV-suppressive factor produced by CD8+ T cells. Performing-low memory CD8+ T cells that normally synthesize CCL4. Based on functional analysis of CCL4, one or more additional beta chemokine receptors that transduce CCL4 signals must also exist. MIP-1alpha and CCL4 have been shown to lack affinity for the erythrocyte surface chemokine receptor/Duffy antigen that binds many alpha as well as beta chemokines(11, 14).