

Anti-IGFBP-1 Antibody
Catalog # ABO12290**Specification**

Anti-IGFBP-1 Antibody - Product Information

Application	WB, E
Primary Accession	P47876
Host	Rabbit
Reactivity	Mouse, Rat
Clonality	Polyclonal
Format	Lyophilized

Description

Rabbit IgG polyclonal antibody for Insulin-like growth factor-binding protein 1(IGFBP1) detection. Tested with WB, ELISA in Mouse;Rat.

Reconstitution

Add 0.2ml of distilled water will yield a concentration of 500ug/ml.

Anti-IGFBP-1 Antibody - Additional Information

Gene ID 16006

Other Names

Insulin-like growth factor-binding protein 1, IBP-1, IGF-binding protein 1, IGFBP-1, Igfbp1, Igfbp-1

Calculated MW

29570 MW KDa

Application Details

ELISA , 0.1-0.5 µg/ml, Mouse, -
Western blot, 0.1-0.5 µg/ml, Mouse, Rat

Subcellular Localization

Secreted.

Protein Name

Insulin-like growth factor-binding protein 1

Contents

Each vial contains 5mg BSA, 0.9mg NaCl, 0.2mg Na₂HPO₄, 0.05mg NaN₃.

Immunogen

A synthetic peptide corresponding to a sequence at the C-terminus of mouse IGFBP-1 (177-207aa REIADLKKWKEPCQRELYKVLRLAAAQKA), different from the related human sequence by eleven amino acids, and from the related rat sequence by one amino acid.

Purification

Immunogen affinity purified.

Cross Reactivity

No cross reactivity with other proteins

Storage

At -20°C for one year. After r°Constitution, at 4°C for one month. It°Can also be aliquotted and stored frozen at -20°C for a longer time.Avoid repeated freezing and thawing.

Sequence Similarities

Contains 1 IGFBP N-terminal domain.

Anti-IGFBP-1 Antibody - Protein Information

Name Igfbp1

Synonyms Igfbp-1

Function

Multifunctional protein that plays a critical role in regulating the availability of IGFs such as IGF1 and IGF2 to their receptors and thereby regulates IGF-mediated cellular processes including cell migration, proliferation, differentiation or apoptosis in a cell-type specific manner. Also plays a positive role in cell migration by interacting with integrin ITGA5:ITGB1 through its RGD motif. Mechanistically, binding to integrins leads to activation of focal adhesion kinase/PTK2 and stimulation of the mitogen-activated protein kinase (MAPK) pathway (By similarity). Regulates cardiomyocyte apoptosis by suppressing HIF-1alpha/HIF1A ubiquitination and subsequent degradation (By similarity).

Cellular Location

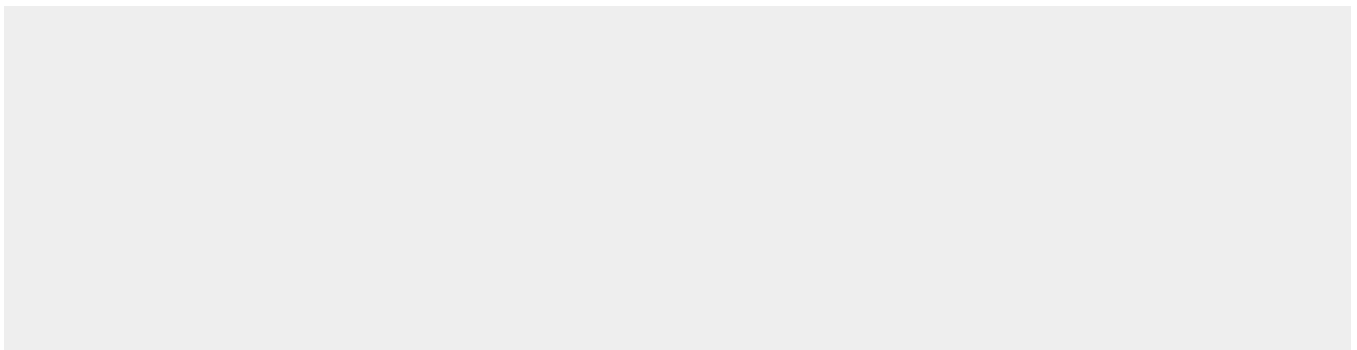
Secreted {ECO:0000250|UniProtKB:P08833}.

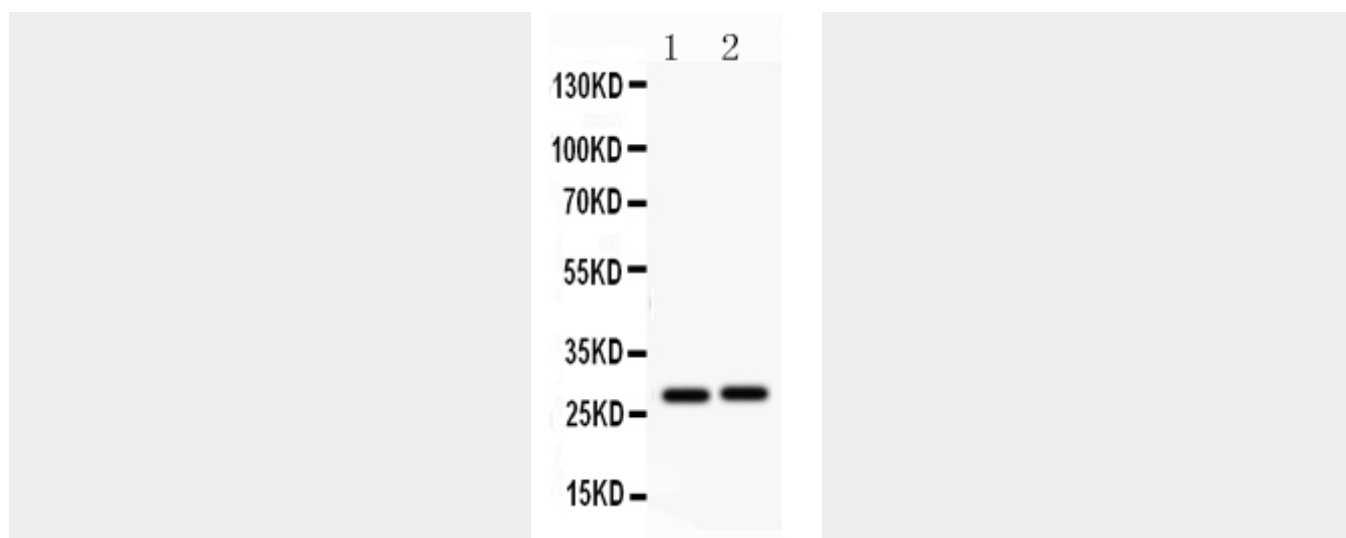
Anti-IGFBP-1 Antibody - Protocols

Provided below are standard protocols that you may find useful for product applications.

- [Western Blot](#)
- [Blocking Peptides](#)
- [Dot Blot](#)
- [Immunohistochemistry](#)
- [Immunofluorescence](#)
- [Immunoprecipitation](#)
- [Flow Cytometry](#)
- [Cell Culture](#)

Anti-IGFBP-1 Antibody - Images





Anti- IGFBP-1 Picoband antibody, ABO12290, Western blotting All lanes: Anti IGFBP-1 (ABO12290) at 0.5ug/ml Lane 1: Rat Kidney Tissue Lysate at 50ug Lane 2: Mouse Kidney Tissue Lysate at 50ug Predicted bind size: 28KD Observed bind size: 28KD

Anti-IGFBP-1 Antibody - Background

IGFBP1, Insulin-like growth factor-binding protein 1, also known as placental protein 12 (PP12), is a protein that in humans is encoded by the IGFBP1 gene. The IGFBP1 gene has 4 exons and spans 5.9 kb. And the IGFBP1 gene is localized to 7p13-p12 by in situ hybridization. This gene is a member of the Insulin-like growth factor-binding protein (IGFBP) family and encodes a protein with an IGFBP domain and a type-I thyroglobulin domain. The protein binds both insulin-like growth factors (IGFs) I and II and circulates in the plasma. Binding of this protein prolongs the half-life of the IGFs and alters their interaction with cell surface receptors. Alternate transcriptional splice variants, encoding different isoforms, have been characterized.