

**Anti-Lumican Picoband Antibody**  
**Catalog # ABO12348****Specification**

---

**Anti-Lumican Picoband Antibody - Product Information**

Application	WB, IHC
Primary Accession	<a href="#">P51885</a>
Host	Rabbit
Reactivity	Mouse
Clonality	Polyclonal
Format	Lyophilized

**Description**

Rabbit IgG polyclonal antibody for Lumican(LUM) detection. Tested with WB, IHC-P, ELISA in Mouse.

**Reconstitution**

Add 0.2ml of distilled water will yield a concentration of 500ug/ml.

**Anti-Lumican Picoband Antibody - Additional Information**

**Gene ID** 17022

**Other Names**

Lumican, Keratan sulfate proteoglycan lumican, KSPG lumican, Lum, Lcn, Ldc

**Calculated MW**

38265 MW KDa

**Application Details**

Immunohistochemistry(Paraffin-embedded Section), 0.5-1 µg/ml, Mouse, By Heat<br> <br>ELISA  
, 0.1-0.5 µg/ml, Mouse, -<br>Western blot, 0.1-0.5 µg/ml, Mouse<br>

**Subcellular Localization**

Secreted, extracellular space, extracellular matrix .

**Tissue Specificity**

Cornea and other tissues.

**Protein Name**

Lumican

**Contents**

Each vial contains 5mg BSA, 0.9mg NaCl, 0.2mg Na<sub>2</sub>HPO<sub>4</sub>, 0.05mg NaN<sub>3</sub>.

**Immunogen**

E. coli-derived mouse Lumican recombinant protein (Position: I68-N338). Mouse Lumican shares 88.9% and 98.2% amino acid (aa) sequence identity with human and rat Lumican, respectively.

**Purification**

Immunogen affinity purified.

**Cross Reactivity**

No cross reactivity with other proteins

**Storage**

**At -20°C for one year. After reconstitution, at 4°C for one month. It can also be aliquotted and stored frozen at -20°C for a longer time. Avoid repeated freezing and thawing.**

**Anti-Lumican Picoband Antibody - Protein Information**

**Name** Lum

**Synonyms** Lcn, Ldc

**Cellular Location**

Secreted, extracellular space, extracellular matrix

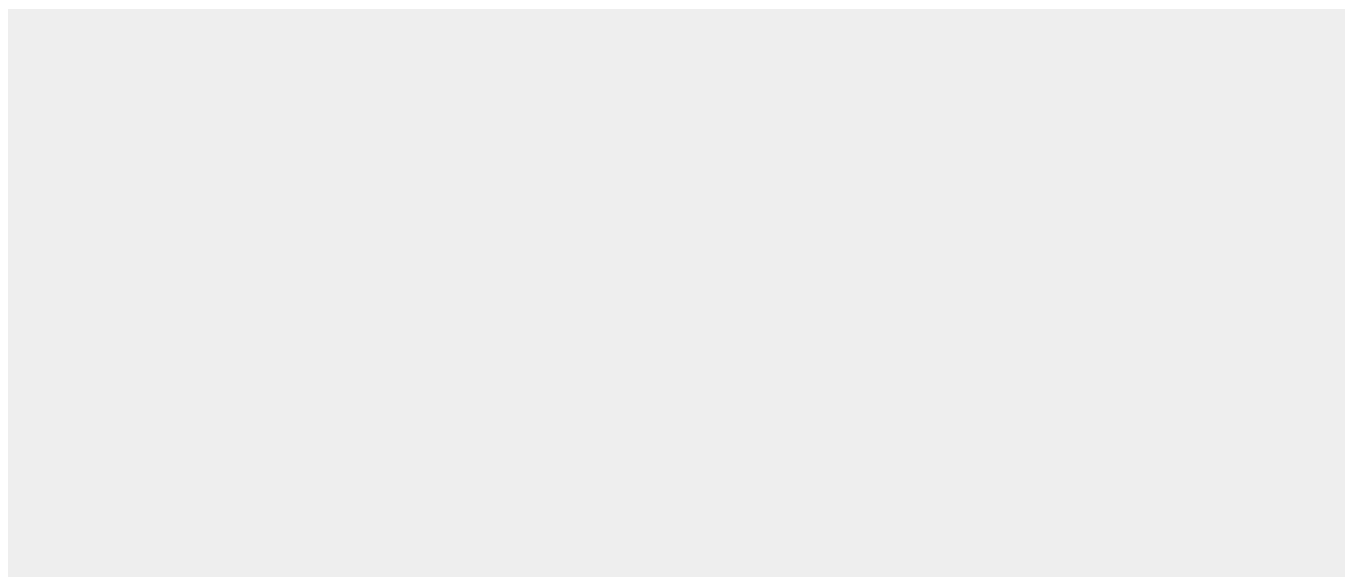
**Tissue Location**

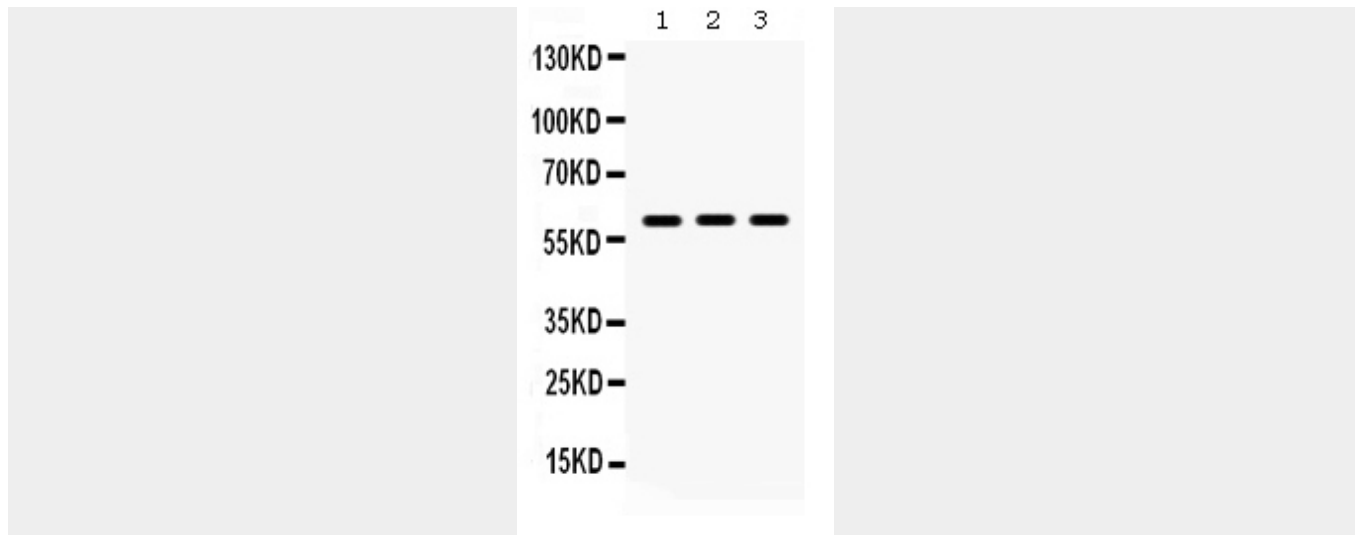
Cornea and other tissues.

**Anti-Lumican Picoband Antibody - Protocols**

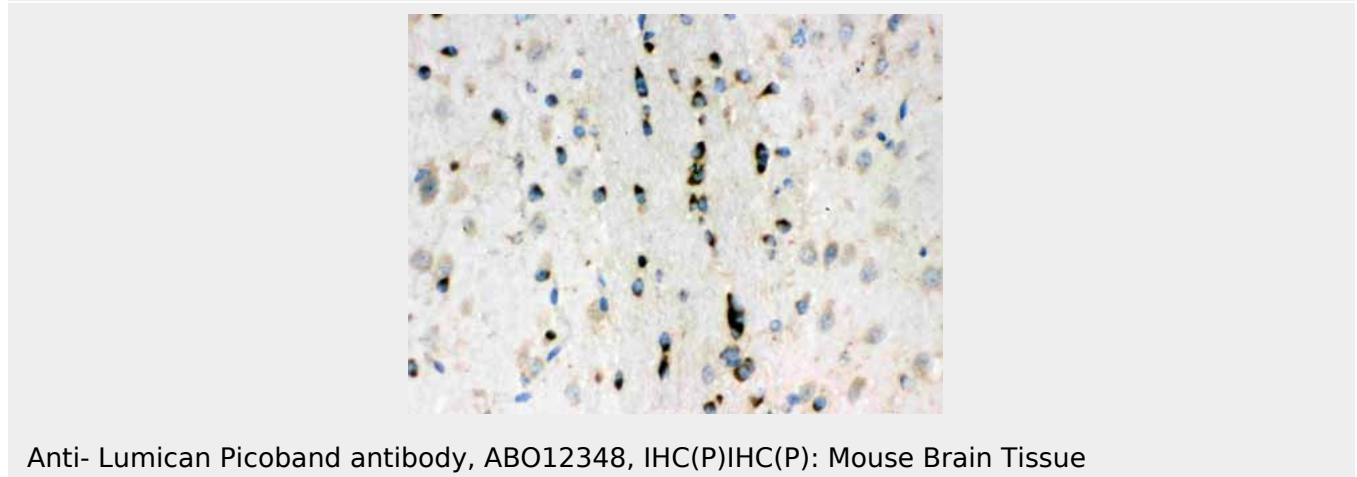
Provided below are standard protocols that you may find useful for product applications.

- [Western Blot](#)
- [Blocking Peptides](#)
- [Dot Blot](#)
- [Immunohistochemistry](#)
- [Immunofluorescence](#)
- [Immunoprecipitation](#)
- [Flow Cytometry](#)
- [Cell Culture](#)

**Anti-Lumican Picoband Antibody - Images**



Anti- Lumican Picoband antibody, ABO12348, Western blotting All lanes: Anti Lumican (ABO12348) at 0.5ug/ml Lane 1: Mouse Testis Tissue Lysate at 50ug Lane 2: Mouse Thymus Tissue Lysate at 50ug Lane 3: NIH3T3 Whole Cell Lysate at 40ug Predicted bind size: 38KD Observed bind size: 60KD



Anti- Lumican Picoband antibody, ABO12348, IHC(P) IHC(P): Mouse Brain Tissue

### Anti-Lumican Picoband Antibody - Background

Lumican, also known as LUM, is an extracellular matrix protein that, in humans, is encoded by the LUM gene on chromosome 12. Lumican is a major keratan sulfate proteoglycan of the cornea but is ubiquitously distributed in most mesenchymal tissues throughout the body. And Lumican is involved in collagen fibril organization and circumferential growth, corneal transparency, and epithelial cell migration and tissue repair. Corneal transparency is possible due to the exact alignment of collagen fibers by lumican (and keratocan) in the intrafibrillar space.