

Anti-Mesothelin Picoband Antibody
Catalog # ABO12357**Specification**

Anti-Mesothelin Picoband Antibody - Product Information

Application	IHC-P
Primary Accession	Q61468
Host	Rabbit
Reactivity	Mouse
Clonality	Polyclonal
Format	Lyophilized

Description

Rabbit IgG polyclonal antibody for Mesothelin(MSLN) detection. Tested with IHC-P in Mouse.

Reconstitution

Add 0.2ml of distilled water will yield a concentration of 500ug/ml.

Anti-Mesothelin Picoband Antibody - Additional Information

Gene ID 56047

Other Names

Mesothelin, Pre-pro-megakaryocyte-potentiating factor, Megakaryocyte-potentiating factor, MPF, Mesothelin, cleaved form, Msln, Mes, Mpf

Calculated MW

69423 MW KDa

Application Details

Immunohistochemistry(Paraffin-embedded Section), 0.5-1 µg/ml, Mouse, By Heat

Subcellular Localization

Cell membrane ; Lipid-anchor, GPI-anchor . Golgi apparatus .

Tissue Specificity

Highly expressed in lung and heart. Expressed at low levels in spleen, liver, kidney and testis. Present in lung (at protein level). .

Protein Name

Mesothelin

Contents

Each vial contains 5mg BSA, 0.9mg NaCl, 0.2mg Na₂HPO₄, 0.05mg NaN₃.

Immunogen

E.coli-derived mouse Mesothelin recombinant protein (Position: K308-L576). Mouse Mesothelin shares 58.4%% and 89.6% amino acid (aa) sequence identity with human and rat Mesothelin, respectively.

Purification

Immunogen affinity purified.

Cross Reactivity

No cross reactivity with other proteins

Storage

At -20°C for one year. After reconstitution, at 4°C for one month. It can also be aliquotted and stored frozen at -20°C for a longer time. Avoid repeated freezing and thawing.

Anti-Mesothelin Picoband Antibody - Protein Information

Name Msln

Synonyms Mes, Mpf

Function

Membrane-anchored forms may play a role in cellular adhesion.

Cellular Location

Cell membrane; Lipid-anchor, GPI- anchor. Golgi apparatus

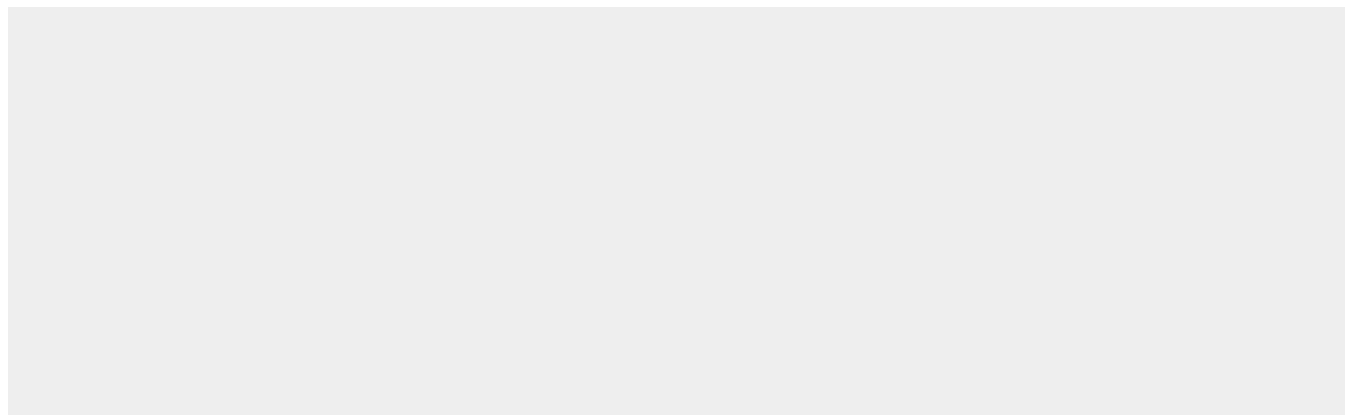
Tissue Location

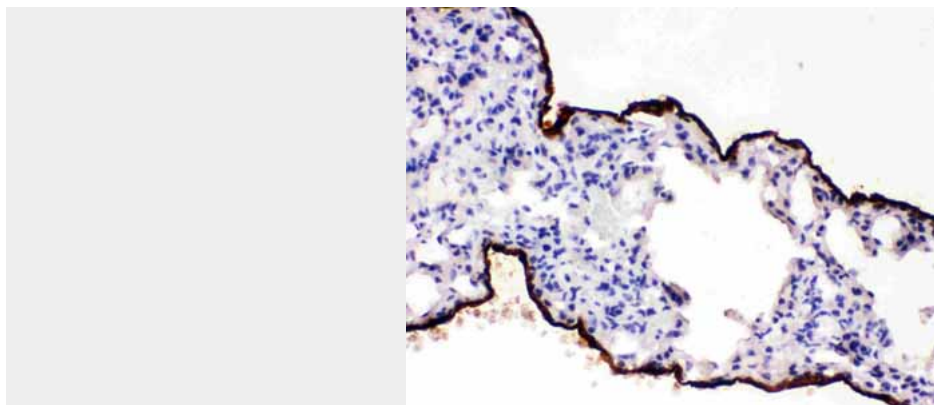
Highly expressed in lung and heart. Expressed at low levels in spleen, liver, kidney and testis. Present in lung (at protein level).

Anti-Mesothelin Picoband Antibody - Protocols

Provided below are standard protocols that you may find useful for product applications.

- [Western Blot](#)
- [Blocking Peptides](#)
- [Dot Blot](#)
- [Immunohistochemistry](#)
- [Immunofluorescence](#)
- [Immunoprecipitation](#)
- [Flow Cytometry](#)
- [Cell Culture](#)

Anti-Mesothelin Picoband Antibody - Images



Anti- Mesothelin Picoband antibody, ABO12357, IHC(P)IHC(P): Mouse Lung Tissue

Anti-Mesothelin Picoband Antibody - Background

Mesothelin, also known as MSLN or MPF, is a protein that in humans is encoded by the MSLN gene. This gene is mapped to 16p13.3. This gene encodes a precursor protein that is cleaved into two products, megakaryocyte potentiating factor and mesothelin. Megakaryocyte potentiation factor functions as a cytokine that can stimulate colony formation in bone marrow megakaryocytes. Mesothelin is a glycosylphosphatidylinositol-anchored cell-surface protein that may function as a cell adhesion protein. This protein is overexpressed in epithelial mesotheliomas, ovarian cancers and in specific squamous cell carcinomas.