

**Anti-GRK6 Picoband Antibody**  
**Catalog # ABO12395****Specification**

---

**Anti-GRK6 Picoband Antibody - Product Information**

Application	WB
Primary Accession	<a href="#">P43250</a>
Host	Rabbit
Reactivity	Human, Rat
Clonality	Polyclonal
Format	Lyophilized

**Description**

Rabbit IgG polyclonal antibody for G protein-coupled receptor kinase 6 (GRK6) detection. Tested with WB in Human; Rat.

**Reconstitution**

Add 0.2ml of distilled water will yield a concentration of 500ug/ml.

**Anti-GRK6 Picoband Antibody - Additional Information**

**Gene ID** 2870

**Other Names**

G protein-coupled receptor kinase 6, 2.7.11.16, G protein-coupled receptor kinase GRK6, GRK6, GPRK6

**Calculated MW**

65991 MW KDa

**Application Details**

Western blot, 0.1-0.5 µg/ml, Human, Rat<br>

**Subcellular Localization**

Membrane; Lipid-anchor.

**Tissue Specificity**

Widely expressed. .

**Protein Name**

G protein-coupled receptor kinase 6

**Contents**

Each vial contains 5mg BSA, 0.9mg NaCl, 0.2mg Na<sub>2</sub>HPO<sub>4</sub>, 0.05mg NaN<sub>3</sub>.

**Immunogen**

A synthetic peptide corresponding to a sequence at the C-terminus of human GRK6 (382-417aa QSPFQQRKKIKREEVERLVKEVP EEYSERFSPQAR), different from the related mouse sequence by four amino acids, and from the related rat sequence by three amino acids.

**Purification**

Immunogen affinity purified.

**Cross Reactivity**

No cross reactivity with other proteins

**Storage**

**At -20°C for one year. After reconstitution, at 4°C for one month. It can also be aliquotted and stored frozen at -20°C for a longer time. Avoid repeated freezing and thawing.**

**Anti-GRK6 Picoband Antibody - Protein Information**

**Name** GRK6

**Synonyms** GPRK6

**Function**

Specifically phosphorylates the activated forms of G protein- coupled receptors. Such receptor phosphorylation initiates beta- arrestin-mediated receptor desensitization, internalization, and signaling events leading to their desensitization. Seems to be involved in the desensitization of D2-like dopamine receptors in striatum and chemokine receptor CXCR4 which is critical for CXCL12-induced cell chemotaxis (By similarity). Phosphorylates rhodopsin (RHO) (in vitro) and a non G-protein-coupled receptor: LRP6 during Wnt signaling (in vitro).

**Cellular Location**

Membrane; Lipid-anchor.

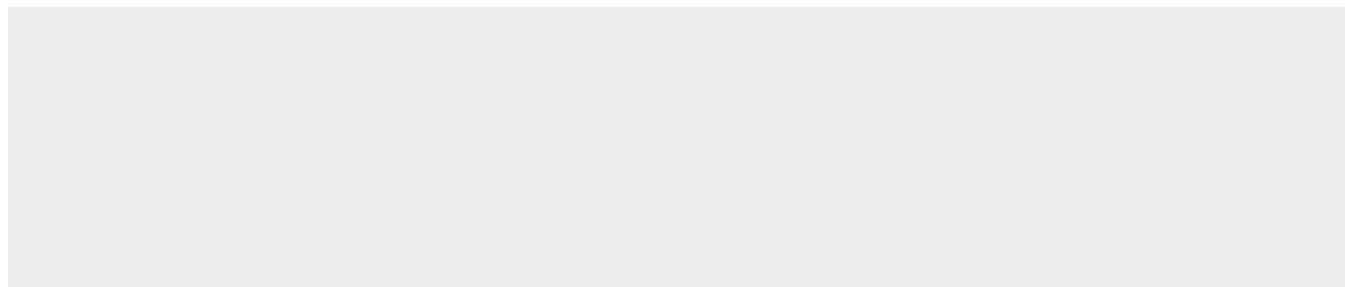
**Tissue Location**

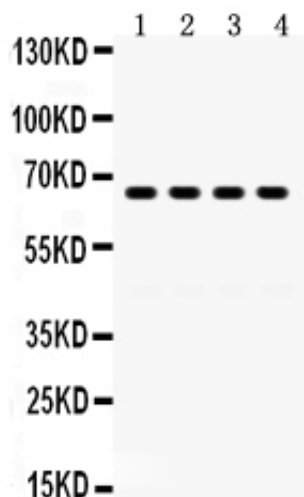
Widely expressed..

**Anti-GRK6 Picoband Antibody - Protocols**

Provided below are standard protocols that you may find useful for product applications.

- [Western Blot](#)
- [Blocking Peptides](#)
- [Dot Blot](#)
- [Immunohistochemistry](#)
- [Immunofluorescence](#)
- [Immunoprecipitation](#)
- [Flow Cytometry](#)
- [Cell Culture](#)

**Anti-GRK6 Picoband Antibody - Images**



Anti- GRK6 Picoband antibody, ABO12395, Western blotting All lanes: Anti GRK6 (ABO12395) at 0.5ug/ml  
Lane 1: Rat Lung Tissue Lysate at 50ug  
Lane 2: HELA Whole Cell Lysate at 40ug  
Lane 3: K562 Whole Cell Lysate at 40ug  
Lane 4: JURKAT Whole Cell Lysate at 40ug  
Predicted bind size: 66KD  
Observed bind size: 66KD

#### Anti-GRK6 Picoband Antibody - Background

G protein-coupled receptor kinase 6 is an enzyme that in humans is encoded by the GRK6 gene. It is mapped to 5q35. This gene encodes a member of the guanine nucleotide-binding protein (G protein)-coupled receptor kinase subfamily of the Ser/Thr protein kinase family. The protein phosphorylates the activated forms of G protein-coupled receptors thus initiating their deactivation. Several transcript variants encoding different isoforms have been described for this gene. Also, GRK6 appears to be involved in responses to morphine.