

**Anti-IGFBP-3 Antibody**  
**Catalog # ABO12396****Specification**

---

**Anti-IGFBP-3 Antibody - Product Information**

Application	WB, IHC-P, E
Primary Accession	<a href="#">P17936</a>
Host	Rabbit
Reactivity	Human, Rat
Clonality	Polyclonal
Format	Lyophilized

**Description**

Rabbit IgG polyclonal antibody for Insulin-like growth factor-binding protein 3(IGFBP3) detection. Tested with WB, IHC-P, ELISA in Human;Rat.

**Reconstitution**

Add 0.2ml of distilled water will yield a concentration of 500ug/ml.

**Anti-IGFBP-3 Antibody - Additional Information**

**Gene ID** 3486

**Other Names**

Insulin-like growth factor-binding protein 3, IBP-3, IGF-binding protein 3, IGFBP-3, IGFBP3, IBP3

**Calculated MW**

31674 MW KDa

**Application Details**

Immunohistochemistry(Paraffin-embedded Section), 0.5-1 µg/ml, Human, By Heat<br> <br>ELISA , 0.1-0.5 µg/ml, Human, -<br>Western blot, 0.1-0.5 µg/ml, Human, Rat<br>

**Subcellular Localization**

Secreted .

**Tissue Specificity**

Expressed by most tissues. Present in plasma.

**Protein Name**

Insulin-like growth factor-binding protein 3

**Contents**

Each vial contains 5mg BSA, 0.9mg NaCl, 0.2mg Na<sub>2</sub>HPO<sub>4</sub>, 0.05mg NaN<sub>3</sub>.

**Immunogen**

A synthetic peptide corresponding to a sequence at the C-terminus of human IGFBP-3 (214-252aa RREMEDTLNHLKFLNVLSPRGVHIPNCDKKGFKKKQCR), identical to the related mouse and rat sequences.

**Purification**

Immunogen affinity purified.

**Cross Reactivity**

No cross reactivity with other proteins

**Storage**

**At -20°C for one year. After reconstitution, at 4°C for one month. It can also be aliquotted and stored frozen at -20°C for a longer time. Avoid repeated freezing and thawing.**

**Anti-IGFBP-3 Antibody - Protein Information**

**Name** IGFBP3

**Synonyms** IBP3

**Function**

Multifunctional protein that plays a critical role in regulating the availability of IGFs such as IGF1 and IGF2 to their receptors and thereby regulates IGF-mediated cellular processes including proliferation, differentiation, and apoptosis in a cell-type specific manner (PubMed: [10874028](http://www.uniprot.org/citations/10874028), PubMed: [19556345](http://www.uniprot.org/citations/19556345)). Also exhibits IGF- independent antiproliferative and apoptotic effects mediated by its receptor TMEM219/IGFBP-3R (PubMed: [20353938](http://www.uniprot.org/citations/20353938)). Inhibits the positive effect of humanin on insulin sensitivity (PubMed: [19623253](http://www.uniprot.org/citations/19623253)). Promotes testicular germ cell apoptosis (PubMed: [19952275](http://www.uniprot.org/citations/19952275)). Acts via LRP-1/alpha2M receptor, also known as TGF-beta type V receptor, to mediate cell growth inhibition independent of IGF1 (PubMed: [9252371](http://www.uniprot.org/citations/9252371)). Mechanistically, induces serine-specific dephosphorylation of IRS1 or IRS2 upon ligation to its receptor, leading to the inhibitory cascade (PubMed: [15371331](http://www.uniprot.org/citations/15371331)). In the nucleus, interacts with transcription factors such as retinoid X receptor-alpha/RXRA to regulate transcriptional signaling and apoptosis (PubMed: [10874028](http://www.uniprot.org/citations/10874028)).

**Cellular Location**

Secreted. Nucleus

**Tissue Location**

Expressed by most tissues. Present in plasma.

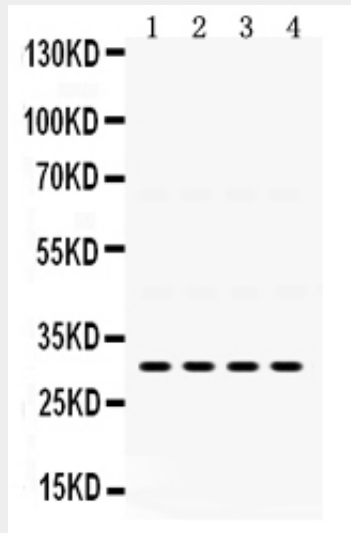
**Anti-IGFBP-3 Antibody - Protocols**

Provided below are standard protocols that you may find useful for product applications.

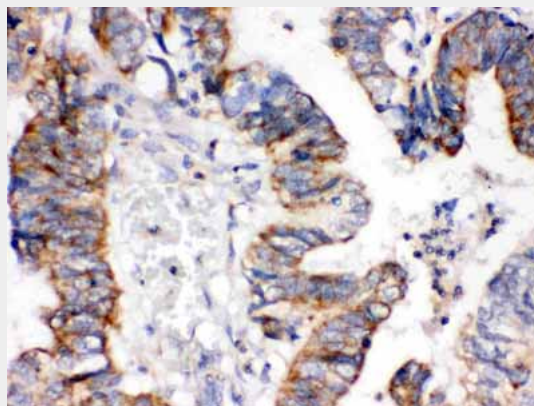
- [Western Blot](#)
- [Blocking Peptides](#)
- [Dot Blot](#)
- [Immunohistochemistry](#)
- [Immunofluorescence](#)

- [Immunoprecipitation](#)
- [Flow Cytometry](#)
- [Cell Culture](#)

### Anti-IGFBP-3 Antibody - Images



Anti- IGFBP-3 Picoband antibody, ABO12396, Western blotting  
All lanes: Anti IGFBP-3 (ABO12396) at 0.5ug/ml  
Lane 1: Rat Kidney Tissue Lysate at 50ug  
Lane 2: Rat Liver Tissue Lysate at 50ug  
Lane 3: SGC Whole Cell Lysate at 40ug  
Lane 4: 22RV1 Whole Cell Lysate at 40ug  
Predicted bind size: 31KD  
Observed bind size: 31KD



Anti- IGFBP-3 Picoband antibody, ABO12396, IHC(P)  
IHC(P): Human Intestinal Cancer Tissue

### Anti-IGFBP-3 Antibody - Background

IGFBP3, Insulin-like growth factor-binding protein 3, is a member of the insulin-like growth factor binding protein (IGFBP) family and encodes a protein with an IGFBP domain and a thyroglobulin type-I domain. IGFBP3 is located on chromosome 7. The protein forms a ternary complex with insulin-like growth factor acid-labile subunit (IGFALS) and either insulin-like growth factor (IGF) I or II. In this form, it circulates in the plasma, prolonging the half-life of IGFs and altering their interaction with cell surface receptors. Alternate transcriptional splice variants, encoding different isoforms, have been characterized.