

**Anti-Involucrin Picoband Antibody**  
**Catalog # ABO12398****Specification**

---

**Anti-Involucrin Picoband Antibody - Product Information**

Application	WB
Primary Accession	<a href="#">P07476</a>
Host	Rabbit
Reactivity	Human
Clonality	Polyclonal
Format	Lyophilized

**Description**

Rabbit IgG polyclonal antibody for Involucrin(IVL) detection. Tested with WB in Human.

**Reconstitution**

Add 0.2ml of distilled water will yield a concentration of 500ug/ml.

**Anti-Involucrin Picoband Antibody - Additional Information**

**Gene ID** 3713

**Other Names**

Involucrin, IVL

**Calculated MW**

68479 MW KDa

**Application Details**

Western blot, 0.1-0.5 µg/ml, Human<br>

**Subcellular Localization**

Cytoplasm. Constituent of the scaffolding of the cornified envelope.

**Tissue Specificity**

Keratinocytes of epidermis and other stratified squamous epithelia.

**Protein Name**

Involucrin

**Contents**

Each vial contains 5mg BSA, 0.9mg NaCl, 0.2mg Na<sub>2</sub>HPO<sub>4</sub>, 0.05mg NaN<sub>3</sub>.

**Immunogen**

A synthetic peptide corresponding to a sequence at the C-terminus of human Involucrin (551-585aa QVQDIQPALPTKGEVLLPVEHQQQKQEVQWPPKHK).

**Purification**

Immunogen affinity purified.

**Cross Reactivity**

No cross reactivity with other proteins

**Storage**

At -20°C for one year. After reconstitution, at 4°C for one month. It can also be aliquotted and stored frozen at -20°C for a longer time. Avoid repeated freezing and thawing.

**Anti-Involucrin Picoband Antibody - Protein Information****Name** IVL**Function**

Part of the insoluble cornified cell envelope (CE) of stratified squamous epithelia.

**Cellular Location**

Cytoplasm. Note=Constituent of the scaffolding of the cornified envelope

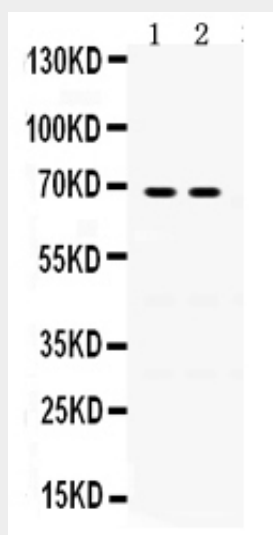
**Tissue Location**

Keratinocytes of epidermis and other stratified squamous epithelia

**Anti-Involucrin Picoband Antibody - Protocols**

Provided below are standard protocols that you may find useful for product applications.

- [Western Blot](#)
- [Blocking Peptides](#)
- [Dot Blot](#)
- [Immunohistochemistry](#)
- [Immunofluorescence](#)
- [Immunoprecipitation](#)
- [Flow Cytometry](#)
- [Cell Culture](#)

**Anti-Involucrin Picoband Antibody - Images**

Anti- Involucrin Picoband antibody, ABO12398, Western blottingAll lanes: Anti Involucrin (ABO12398) at 0.5ug/mlLane 1: A431 Whole Cell Lysate at 40ugLane 2: A549 Whole Cell Lysate at 40ugPredicted bind size: 68KDObserved bind size: 68KD

#### **Anti-Involucrin Picoband Antibody - Background**

Involucrin is a protein component of human skin and in humans is encoded by the IVL gene. It is a highly reactive, soluble, transglutaminase substrate protein present in keratinocytes of epidermis and other stratified squamous epithelia. It first appears in the cell cytosol, but ultimately becomes cross-linked to membrane proteins by transglutaminase thus helping in the formation of an insoluble envelope beneath the plasma membrane functioning as a glutamyl donor during assembly of the cornified envelope. Additionally, Involucrin is synthesised in the stratum spinosum and cross linked in the stratum granulosum by the transglutaminase enzyme that makes it highly stable. Thus it provides structural support to the cell, thereby allowing the cell to resist invasion by micro-organisms.