

**Anti-SDC1/Syndecan-1 Antibody**  
**Catalog # ABO12429****Specification**

---

**Anti-SDC1/Syndecan-1 Antibody - Product Information**

|                   |                        |
|-------------------|------------------------|
| Application       | WB                     |
| Primary Accession | <a href="#">P18827</a> |
| Host              | Rabbit                 |
| Reactivity        | Human                  |
| Clonality         | Polyclonal             |
| Format            | Lyophilized            |

**Description**

Rabbit IgG polyclonal antibody for Syndecan-1(SDC1) detection. Tested with WB in Human.

**Reconstitution**

Add 0.2ml of distilled water will yield a concentration of 500ug/ml.

**Anti-SDC1/Syndecan-1 Antibody - Additional Information**

**Gene ID** 6382

**Other Names**

Syndecan-1, SYND1, CD138, SDC1, SDC

**Calculated MW**

32462 MW KDa

**Application Details**

Western blot, 0.1-0.5 µg/ml, Human<br>

**Subcellular Localization**

Membrane; Single-pass type I membrane protein. Secreted. Shedding of the ectodomain produces a soluble form.

**Protein Name**

Syndecan-1

**Contents**

Each vial contains 5mg BSA, 0.9mg NaCl, 0.2mg Na<sub>2</sub>HPO<sub>4</sub>, 0.05mg NaN<sub>3</sub>.

**Immunogen**

A synthetic peptide corresponding to a sequence at the C-terminus of human Syndecan-1 (218-251aa ENTAVVAVEPDRRNQSPVDQGATGASQGLLDLDRKE), different from the related mouse sequence by six amino acids, and from the related rat sequence by four amino acids.

**Purification**

Immunogen affinity purified.

**Cross Reactivity**

No cross reactivity with other proteins.

Storage

**At -20°C for one year. After reconstitution, at 4°C for one month. It can also be aliquotted and stored frozen at -20°C for a longer time. Avoid repeated freezing and thawing.**

### **Anti-SDC1/Syndecan-1 Antibody - Protein Information**

**Name** SDC1 ([HGNC:10658](#))

**Synonyms** SDC

#### **Function**

Cell surface proteoglycan that contains both heparan sulfate and chondroitin sulfate and that links the cytoskeleton to the interstitial matrix (By similarity). Regulates exosome biogenesis in concert with SDCBP and PDCD6IP (PubMed:<a href="http://www.uniprot.org/citations/22660413" target="\_blank">22660413</a>). Able to induce its own expression in dental mesenchymal cells and also in the neighboring dental epithelial cells via an MSX1-mediated pathway (By similarity).

#### **Cellular Location**

Membrane; Single-pass type I membrane protein. Secreted  
Note=Shedding of the ectodomain produces a soluble form

#### **Tissue Location**

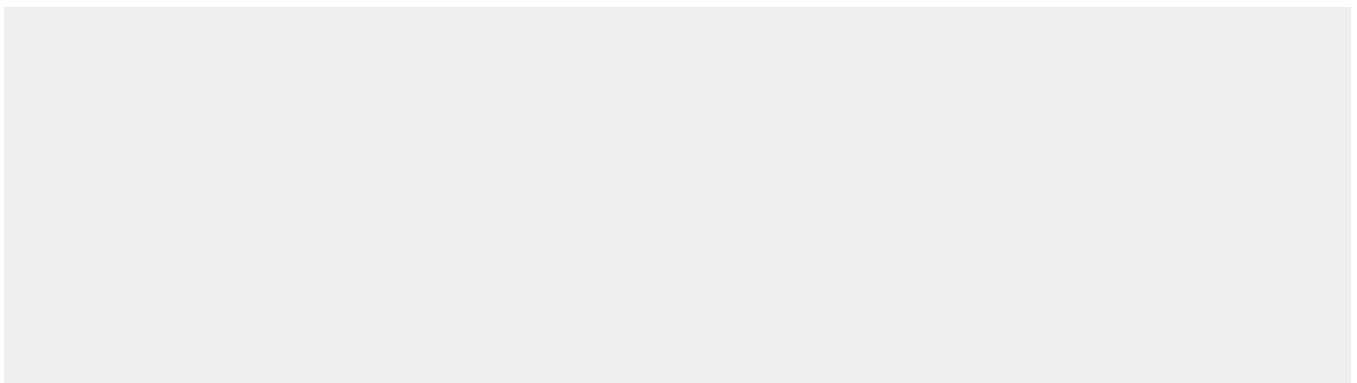
Detected in placenta (at protein level) (PubMed:32337544). Detected in fibroblasts (at protein level) (PubMed:36213313).

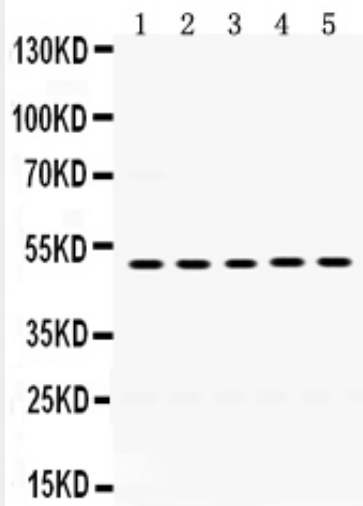
### **Anti-SDC1/Syndecan-1 Antibody - Protocols**

Provided below are standard protocols that you may find useful for product applications.

- [Western Blot](#)
- [Blocking Peptides](#)
- [Dot Blot](#)
- [Immunohistochemistry](#)
- [Immunofluorescence](#)
- [Immunoprecipitation](#)
- [Flow Cytometry](#)
- [Cell Culture](#)

### **Anti-SDC1/Syndecan-1 Antibody - Images**





Anti- Syndecan-1 Picoband antibody, ABO12429, Western blotting All lanes: Anti Syndecan-1 (ABO12429) at 0.5ug/ml Lane 1: HT1080 Whole Cell Lysate at 40ug Lane 2: MCF-7 Whole Cell Lysate at 40ug Lane 3: 293T Whole Cell Lysate at 40ug Lane 4: HEPG2 Whole Cell Lysate at 40ug Lane 5: HELA Whole Cell Lysate at 40ug Predicted bind size: 32KD Observed bind size: 50KD

#### **Anti-SDC1/Syndecan-1 Antibody - Background**

Syndecan 1 is a protein which in humans is encoded by the SDC1 gene. The protein encoded by this gene is a transmembrane (type I) heparan sulfate proteoglycan and is a member of the syndecan proteoglycan family. The syndecans mediate cell binding, cell signaling, and cytoskeletal organization and syndecan receptors are required for internalization of the HIV-1 tat protein. The syndecan-1 protein functions as an integral membrane protein and participates in cell proliferation, cell migration and cell-matrix interactions via its receptor for extracellular matrix proteins. Altered syndecan-1 expression has been detected in several different tumor types. While several transcript variants may exist for this gene, the full-length nature of only two have been described to date. These two represent the major variants of this gene and encode the same protein.