

**Anti-TIMP-2 Antibody**  
**Catalog # ABO12516****Specification**

---

**Anti-TIMP-2 Antibody - Product Information**

Application	WB
Primary Accession	<a href="#">P16035</a>
Host	Rabbit
Reactivity	Human, Mouse, Rat
Clonality	Polyclonal
Format	Lyophilized

**Description**

Rabbit IgG polyclonal antibody for Metalloproteinase inhibitor 2(TIMP2) detection. Tested with WB in Human;Mouse;Rat.

**Reconstitution**

Add 0.2ml of distilled water will yield a concentration of 500ug/ml.

**Anti-TIMP-2 Antibody - Additional Information**

**Gene ID** 7077

**Other Names**

Metalloproteinase inhibitor 2, CSC-21K, Tissue inhibitor of metalloproteinases 2, TIMP-2, TIMP2

**Calculated MW**

24399 MW KDa

**Application Details**

Western blot, 0.1-0.5 µg/ml, Human, Mouse, Rat<br>

**Subcellular Localization**

Secreted.

**Protein Name**

Metalloproteinase inhibitor 2

**Contents**

Each vial contains 5mg BSA, 0.9mg NaCl, 0.2mg Na<sub>2</sub>HPO<sub>4</sub>, 0.05mg NaN<sub>3</sub>.

**Immunogen**

E. coli-derived human TIMP2 recombinant protein (Position: C27-P220). Human TIMP2 shares 98.5% amino acid (aa) sequence identity with both mouse and rat TIMP2.

**Purification**

Immunogen affinity purified.

**Cross Reactivity**

No cross reactivity with other proteins

**Storage**

At -20°C for one year. After reconstitution, at 4°C for one month. It can also be aliquotted and stored frozen at -20°C for a longer time. Avoid repeated freezing and thawing.

**Anti-TIMP-2 Antibody - Protein Information**

**Name** TIMP2

**Function**

Complexes with metalloproteinases (such as collagenases) and irreversibly inactivates them by binding to their catalytic zinc cofactor. Known to act on MMP-1, MMP-2, MMP-3, MMP-7, MMP-8, MMP-9, MMP-10, MMP-13, MMP-14, MMP-15, MMP-16 and MMP-19.

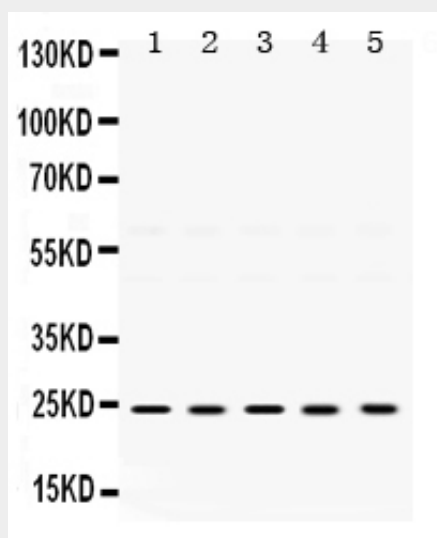
**Cellular Location**

Secreted.

**Anti-TIMP-2 Antibody - Protocols**

Provided below are standard protocols that you may find useful for product applications.

- [Western Blot](#)
- [Blocking Peptides](#)
- [Dot Blot](#)
- [Immunohistochemistry](#)
- [Immunofluorescence](#)
- [Immunoprecipitation](#)
- [Flow Cytometry](#)
- [Cell Culture](#)

**Anti-TIMP-2 Antibody - Images**

Anti- TIMP2 Picoband antibody, ABO12516, Western blotting All lanes: Anti TIMP2 (ABO12516) at 0.5ug/ml  
Lane 1: Rat Spleen Tissue Lysate at 50ug  
Lane 2: Rat Testis Tissue Lysate at 50ug  
Lane 3: Mouse Brain Tissue Lysate at 50ug  
Lane 4: Mouse Thymus Tissue Lysate at 50ug  
Lane 5: HELA

Whole Cell Lysate at 40ug Predicted bind size: 24KD Observed bind size: 24KD

### **Anti-TIMP-2 Antibody - Background**

TIMP metalloproteinase inhibitor 2, a tissue inhibitor of metalloproteinases, also known as TIMP2, is a human gene, thought to be a metastasis suppressor. This gene is a member of the TIMP gene family. The proteins encoded by this gene family are natural inhibitors of the matrix metalloproteinases, a group of peptidases involved in degradation of the extracellular matrix. In addition to an inhibitory role against metalloproteinases, the encoded protein has a unique role among TIMP family members in its ability to directly suppress the proliferation of endothelial cells. As a result, the encoded protein may be critical to the maintenance of tissue homeostasis by suppressing the proliferation of quiescent tissues in response to angiogenic factors, and by inhibiting protease activity in tissues undergoing remodelling of the extracellular matrix.