

Anti-UBE2Q2 Picoband Antibody
Catalog # ABO12525**Specification****Anti-UBE2Q2 Picoband Antibody - Product Information**

Application	WB, IHC-P
Primary Accession	Q8WVN8
Host	Rabbit
Reactivity	Human
Clonality	Polyclonal
Format	Lyophilized

Description

Rabbit IgG polyclonal antibody for Ubiquitin-conjugating enzyme E2 Q2(UBE2Q2) detection. Tested with WB, IHC-P in Human.

Reconstitution

Add 0.2ml of distilled water will yield a concentration of 500ug/ml.

Anti-UBE2Q2 Picoband Antibody - Additional Information

Gene ID 92912

Other Names

Ubiquitin-conjugating enzyme E2 Q2, 2.3.2.23, E2 ubiquitin-conjugating enzyme Q2, Ubiquitin carrier protein Q2, Ubiquitin-protein ligase Q2, UBE2Q2

Calculated MW

42818 MW KDa

Application Details

Immunohistochemistry(Paraffin-embedded Section), 0.5-1 µg/ml, Human, By Heat

Western blot, 0.1-0.5 µg/ml, Human

Subcellular Localization

Cytoplasm .

Tissue Specificity

Detected in hypopharyngeal head and neck squamous cell carcinoma, in tumor masses and invasive epithelium. .

Protein Name

Ubiquitin-conjugating enzyme E2 Q2

Contents

Each vial contains 5mg BSA, 0.9mg NaCl, 0.2mg Na2HPO4, 0.05mg NaN3.

Immunogen

A synthetic peptide corresponding to a sequence at the N-terminus of human UBE2Q2 (83-123aa LERLEDTKNNNLLRQQLKWLICELCSLYNLPHLDVEMLDQ), different from the related mouse sequence

by four amino acids.

Purification

Immunogen affinity purified.

Cross Reactivity

No cross reactivity with other proteins

Storage

At -20°C for one year. After reconstitution, at 4°C for one month. It can also be aliquotted and stored frozen at -20°C for a longer time. Avoid repeated freezing and thawing.

Anti-UBE2Q2 Picoband Antibody - Protein Information

Name UBE2Q2

Function

Accepts ubiquitin from the E1 complex and catalyzes its covalent attachment to other proteins. In vitro catalyzes 'Lys-48'- linked polyubiquitination.

Cellular Location

Cytoplasm.

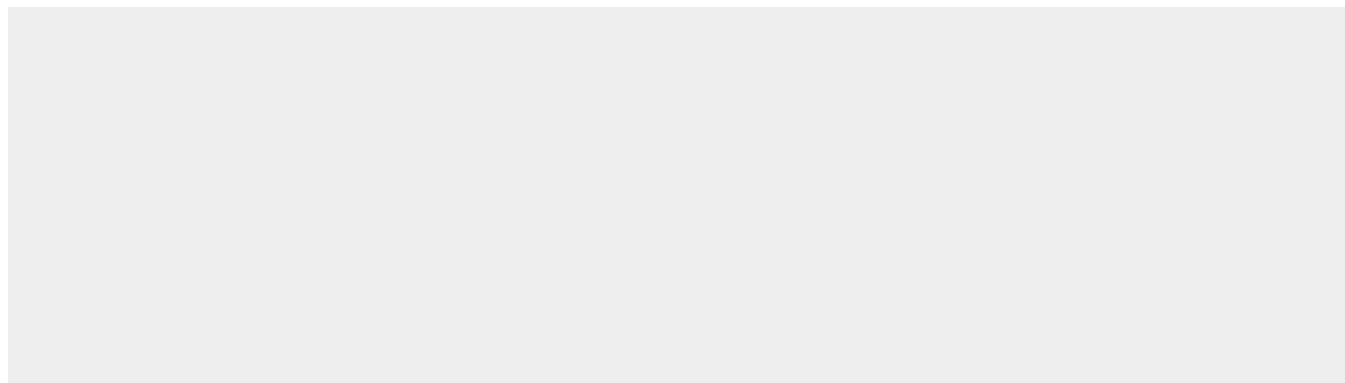
Tissue Location

Detected in hypopharyngeal head and neck squamous cell carcinoma, in tumor masses and invasive epithelium

Anti-UBE2Q2 Picoband Antibody - Protocols

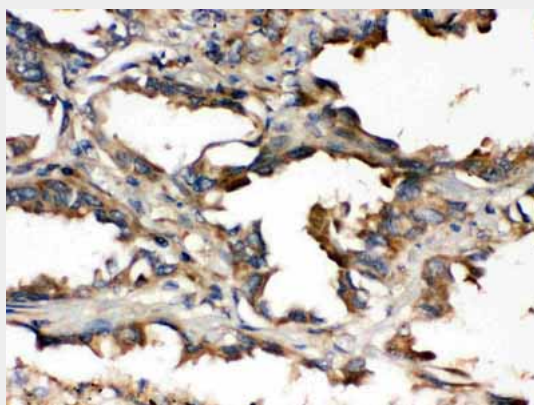
Provided below are standard protocols that you may find useful for product applications.

- [Western Blot](#)
- [Blocking Peptides](#)
- [Dot Blot](#)
- [Immunohistochemistry](#)
- [Immunofluorescence](#)
- [Immunoprecipitation](#)
- [Flow Cytometry](#)
- [Cell Culture](#)

Anti-UBE2Q2 Picoband Antibody - Images



Anti- UBE2Q2 Picoband antibody, ABO12525, Western blotting All lanes: Anti UBE2Q2 (ABO12525) at 0.5ug/ml
Lane 1: HELA Whole Cell Lysate at 40ug
Lane 2: A431 Whole Cell Lysate at 40ug
Lane 3: MCF-7 Whole Cell Lysate at 40ug
Lane 4: SW620 Whole Cell Lysate at 40ug
Predicted bind size: 50KD
Observed bind size: 50KD



Anti- UBE2Q2 Picoband antibody, ABO12525, IHC(P) IHC(P): Human Lung Cancer Tissue

Anti-UBE2Q2 Picoband Antibody - Background

UBE2Q2 is identified as a putative ubiquitin-conjugating enzyme (E2) in a microarray screen for mitotic regulatory proteins. Its gene is mapped to 15q24.2. UBE2Q2 can covalently bind ubiquitin on the active site cysteine within the UBC domain. Inhibition of UBE2Q2 in HeLa cells causes an early mitotic arrest and increases cytotoxicity when the cells are treated with microtubule-inhibiting agents (MIAs). Changes in cell cycle progression and viability are not observed in the absence of MIA treatment, indicating that UBE2Q2 is involved in the response to MIAs rather than performing a more general function in mitosis. Moreover, inhibition of the UBE2Q2 protein causes cells to undergo a prolonged prophase arrest, suggesting that UBE2Q2 normally functions to antagonize an early mitotic checkpoint. Finally, inhibition of UBE2Q2 also sensitizes cells to the cytotoxic effects of MIAs through caspase-mediated apoptosis that is correlated with PARP1 cleavage.