

Anti-APOA1 Antibody
Catalog # ABO12531**Specification**

Anti-APOA1 Antibody - Product Information

Application	WB, IHC
Primary Accession	P04639
Host	Rabbit
Reactivity	Rat
Clonality	Polyclonal
Format	Lyophilized

Description

Rabbit IgG polyclonal antibody for Apolipoprotein A-I (APOA1) detection. Tested with WB, IHC-P in Rat.

Reconstitution

Add 0.2ml of distilled water will yield a concentration of 500ug/ml.

Anti-APOA1 Antibody - Additional Information

Gene ID 25081

Other Names

Apolipoprotein A-I, Apo-AI, ApoA-I, Apolipoprotein A1, Proapolipoprotein A-I, ProapoA-I, APOA1

Calculated MW

30062 MW KDa

Application Details

Immunohistochemistry(Paraffin-embedded Section), 0.5-1 µg/ml, Rat, By Heat

Western blot, 0.1-0.5 µg/ml, Rat

Subcellular Localization

Secreted.

Tissue Specificity

Major protein of plasma HDL, also found in chylomicrons.

Protein Name

Apolipoprotein A-I

Contents

Each vial contains 5mg BSA, 0.9mg NaCl, 0.2mg Na₂HPO₄, 0.05mg NaN₃.

Immunogen

E. coli-derived rat APOA1 recombinant protein (Position: D25-A259). Rat APOA1 shares 61.7% and 68.6% amino acid (aa) sequence identity with human and mouse APOA1, respectively.

Purification

Immunogen affinity purified.

Cross Reactivity

No cross reactivity with other proteins.

Storage

At -20°C for one year. After reconstitution, at 4°C for one month. It can also be aliquotted and stored frozen at -20°C for a longer time. Avoid repeated freezing and thawing.

Anti-APOA1 Antibody - Protein Information

Name ApoA1

Function

Participates in the reverse transport of cholesterol from tissues to the liver for excretion by promoting cholesterol efflux from tissues and by acting as a cofactor for the lecithin cholesterol acyltransferase (LCAT). As part of the SPAP complex, activates spermatozoa motility.

Cellular Location

Secreted.

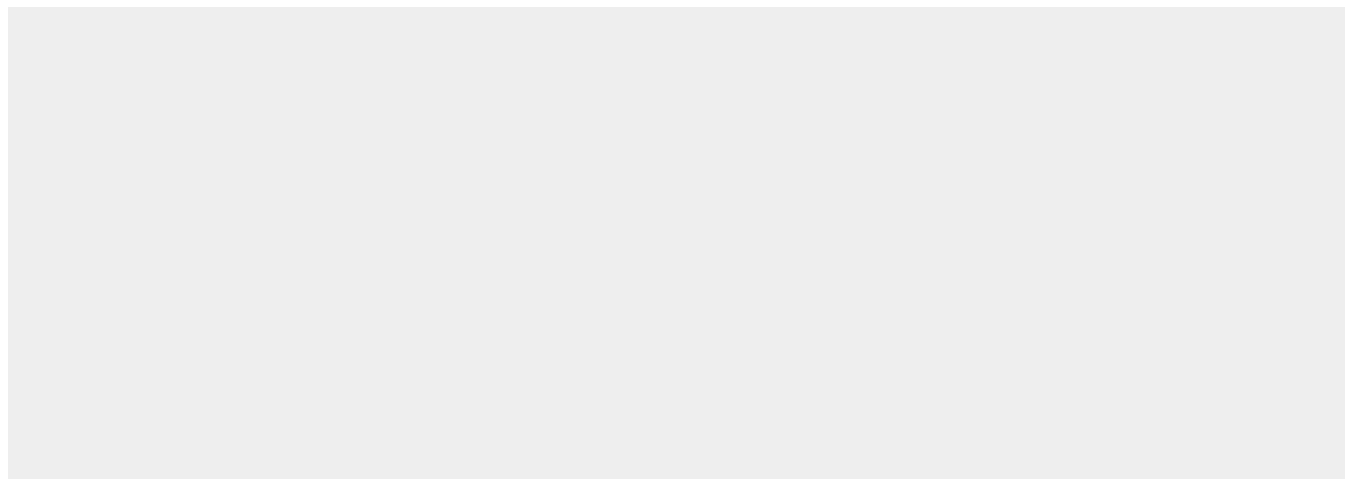
Tissue Location

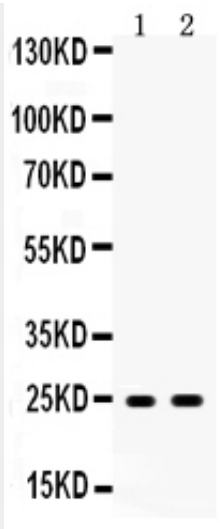
Major protein of plasma HDL, also found in chylomicrons

Anti-APOA1 Antibody - Protocols

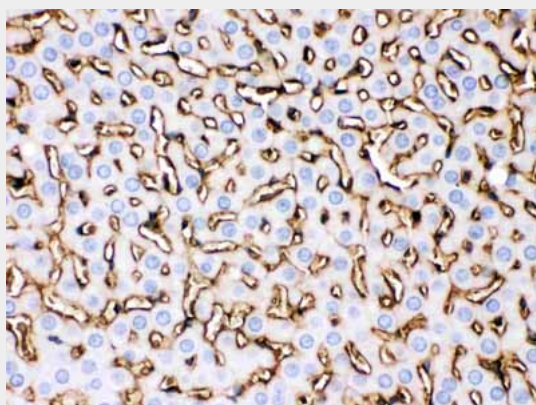
Provided below are standard protocols that you may find useful for product applications.

- [Western Blot](#)
- [Blocking Peptides](#)
- [Dot Blot](#)
- [Immunohistochemistry](#)
- [Immunofluorescence](#)
- [Immunoprecipitation](#)
- [Flow Cytometry](#)
- [Cell Culture](#)

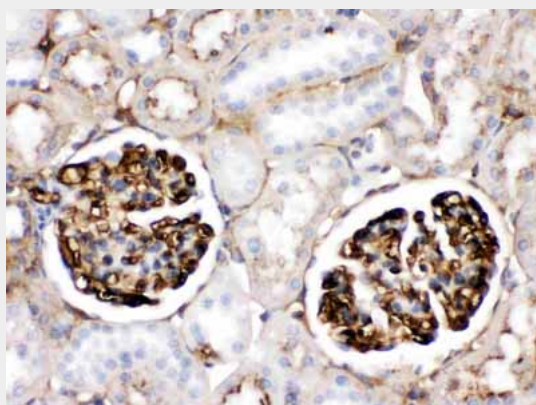
Anti-APOA1 Antibody - Images



Western blot analysis of APOA1 expression in rat liver extract (lane 1) and rat testis extract (lane 2). APOA1 at 24KD was detected using rabbit anti- APOA1 Antigen Affinity purified polyclonal antibody(Catalog # ABO12531) at 0.5 µg/mL. The blot was developed using chemiluminescence (ECL) method .



APOA1 was detected in paraffin-embedded sections of rat liver tissues using rabbit anti- APOA1 Antigen Affinity purified polyclonal antibody (Catalog # ABO12531) at 1 µg/mL. The immunohistochemical section was developed using SABC method .



APOA1 was detected in paraffin-embedded sections of rat kidney tissues using rabbit anti- APOA1 Antigen Affinity purified polyclonal antibody (Catalog # ABO12531) at 1 µg/mL. The immunohistochemical section was developed using SABC method .

Anti-APOA1 Antibody - Background

Apolipoprotein A-1, also known as APOA1, is a human protein with a specific role in lipid metabolism. It binds to lipopolysaccharide or endotoxin, and has a major role in the anti-endotoxin function of HDL. The gene is mapped to 11q23. And it is a single polypeptide chain with 243 amino acid residues of known primary amino acid sequence. The ApoA-I protein promotes cholesterol efflux from tissues to the liver for excretion. It is a cofactor for lecithin cholesterolacyltransferase (LCAT) which is responsible for the formation of most plasma cholesteryl esters. ApoA-I is also isolated as a prostacyclin (PGI₂) stabilizing factor, and thus may have an anticlotting effect. Defects in the gene encoding it are associated with HDL deficiencies, including Tangier disease, and with systemic non-neuropathic amyloidosis. Additionally, ApoA-I overexpression promotes macrophage-specific reverse cholesterol transport.