

Anti-CFD Antibody
Catalog # ABO12536**Specification**

Anti-CFD Antibody - Product Information

Application	WB
Primary Accession	P03953
Host	Rabbit
Reactivity	Mouse
Clonality	Polyclonal
Format	Lyophilized

Description

Rabbit IgG polyclonal antibody for Complement factor D(CFD) detection. Tested with WB in Mouse.

Reconstitution

Add 0.2ml of distilled water will yield a concentration of 500ug/ml.

Anti-CFD Antibody - Additional Information

Gene ID 11537

Other Names

Complement factor D, 3.4.21.46, 28 kDa adipocyte protein, Adipsin, C3 convertase activator, Properdin factor D, Cfd, Adn, Df

Calculated MW

28057 MW KDa

Application Details

Western blot, 0.1-0.5 µg/ml, Mouse

Subcellular Localization

Secreted.

Protein Name

Complement factor D

Contents

Each vial contains 5mg BSA, 0.9mg NaCl, 0.2mg Na₂HPO₄, 0.05mg NaN₃.

Immunogen

E. coli-derived mouse Factor D recombinant protein (Position: Q30-K235). Mouse Factor D shares 66.5% and 87.4% amino acid (aa) sequence identity with human and rat Factor D, respectively.

Purification

Immunogen affinity purified.

Cross Reactivity

No cross reactivity with other proteins.

Storage

At -20°C for one year. After reconstitution, at 4°C for one month. It can also be aliquotted and stored frozen at -20°C for a longer time. Avoid repeated freezing and thawing.

Anti-CFD Antibody - Protein Information

Name Cfd

Synonyms Adn, Df

Function

Factor D cleaves factor B when the latter is complexed with factor C3b, activating the C3bbb complex, which then becomes the C3 convertase of the alternate pathway. Its function is homologous to that of C1s in the classical pathway.

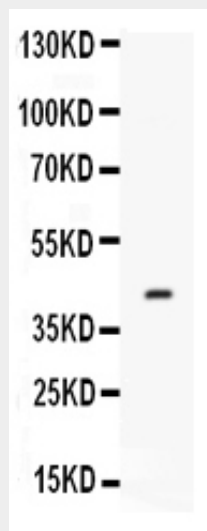
Cellular Location

Secreted.

Anti-CFD Antibody - Protocols

Provided below are standard protocols that you may find useful for product applications.

- [Western Blot](#)
- [Blocking Peptides](#)
- [Dot Blot](#)
- [Immunohistochemistry](#)
- [Immunofluorescence](#)
- [Immunoprecipitation](#)
- [Flow Cytometry](#)
- [Cell Culture](#)

Anti-CFD Antibody - Images

Western blot analysis of Factor D expression in mouse spleen extract (lane 1). Factor D at 43KD

was detected using rabbit anti- Factor D Antigen Affinity purified polyclonal antibody (Catalog # ABO12536) at 0.5 µg/mL. The blot was developed using chemiluminescence (ECL) method .

Anti-CFD Antibody - Background

Factor D is a protein which in humans is encoded by the CFD gene. The protein encoded by this gene is a member of the trypsin family of peptidases. The encoded protein is a component of the alternative complement pathway best known for its role in humoral suppression of infectious agents. It is also a serine protease that is secreted by adipocytes into the bloodstream. And it stimulates glucose transport for triglyceride accumulation in fat cells and inhibits lipolysis. Finally, the encoded protein has a high level of expression in fat, suggesting a role for adipose tissue in immune system biology.