

Anti-EREG Picoband Antibody
Catalog # ABO12550**Specification**

Anti-EREG Picoband Antibody - Product Information

Application	WB
Primary Accession	O14944
Host	Rabbit
Reactivity	Human
Clonality	Polyclonal
Format	Lyophilized

Description

Rabbit IgG polyclonal antibody for Proepiregulin(EREG) detection. Tested with WB in Human.

Reconstitution

Add 0.2ml of distilled water will yield a concentration of 500ug/ml.

Anti-EREG Picoband Antibody - Additional Information

Gene ID 2069

Other Names

Proepiregulin, Epiregulin, EPR, EREG

Calculated MW

19044 MW KDa

Application Details

Western blot, 0.1-0.5 µg/ml, Human

Subcellular Localization

Epiregulin: Secreted, extracellular space .

Tissue Specificity

In normal adults, expressed predominantly in the placenta and peripheral blood leukocytes. High levels were detected in carcinomas of the bladder, lung, kidney and colon. .

Protein Name

Proepiregulin

Contents

Each vial contains 5mg BSA, 0.9mg NaCl, 0.2mg Na₂HPO₄, 0.05mg Na₃.

Immunogen

E. coli-derived human EREG recombinant protein (Position: V60-L108). Human EREG shares 85.7% and 87.8% amino acid (aa) sequence identity with mouse and rat EREG, respectively.

Purification

Immunogen affinity purified.

Cross Reactivity

No cross reactivity with other proteins.

Storage

At -20°C for one year. After reconstitution, at 4°C for one month. It can also be aliquotted and stored frozen at -20°C for a longer time. Avoid repeated freezing and thawing.

Anti-EREG Picoband Antibody - Protein Information**Name** EREG**Function**

Ligand of the EGF receptor/EGFR and ERBB4. Stimulates EGFR and ERBB4 tyrosine phosphorylation (PubMed: [9419975](http://www.uniprot.org/citations/9419975)). Contributes to inflammation, wound healing, tissue repair, and oocyte maturation by regulating angiogenesis and vascular remodeling and by stimulating cell proliferation (PubMed: [24631357](http://www.uniprot.org/citations/24631357)).

Cellular Location

[Epiregulin]: Secreted, extracellular space

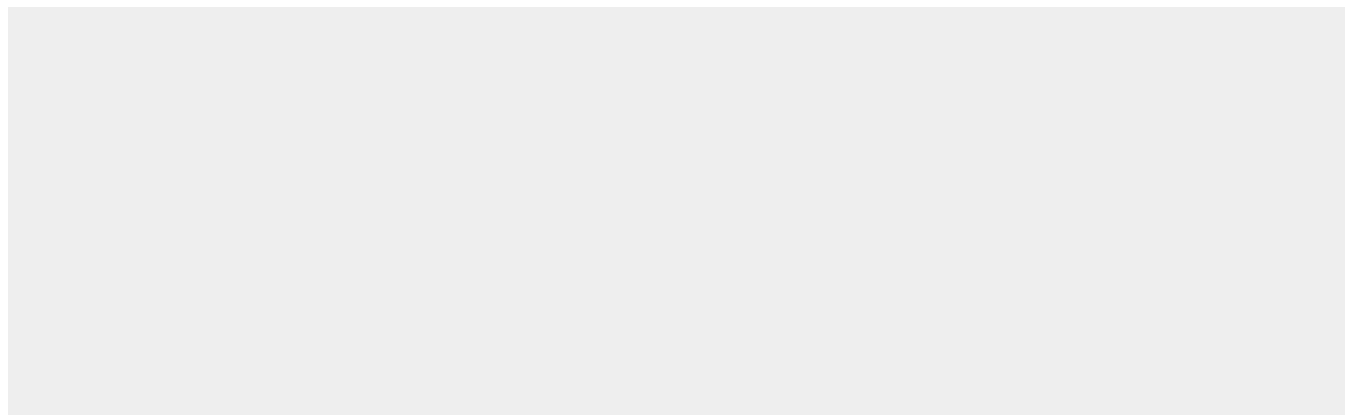
Tissue Location

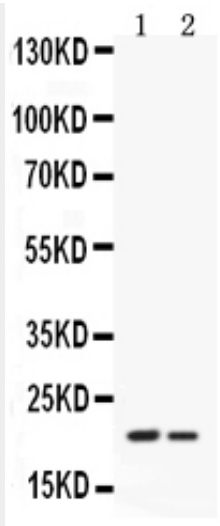
In normal adults, expressed predominantly in the placenta and peripheral blood leukocytes. High levels were detected in carcinomas of the bladder, lung, kidney and colon

Anti-EREG Picoband Antibody - Protocols

Provided below are standard protocols that you may find useful for product applications.

- [Western Blot](#)
- [Blocking Peptides](#)
- [Dot Blot](#)
- [Immunohistochemistry](#)
- [Immunofluorescence](#)
- [Immunoprecipitation](#)
- [Flow Cytometry](#)
- [Cell Culture](#)

Anti-EREG Picoband Antibody - Images



Western blot analysis of EREG expression in human placenta extract (lane 1) and HEPG2 whole cell lysates (lane 2). EREG at 20KD was detected using rabbit anti- EREG Antigen Affinity purified polyclonal antibody (Catalog # ABO12550) at 0.5 µg/mL. The blot was developed using chemiluminescence (ECL) method .

Anti-EREG Picoband Antibody - Background

Epiregulin (EPR) is a protein that in humans is encoded by the EREG gene. It is mapped to 4q13.3. This gene encodes a secreted peptide hormone and member of the epidermal growth factor (EGF) family of proteins. The encoded protein is a ligand of the epidermal growth factor receptor (EGFR) and the structurally related erb-b2 receptor tyrosine kinase 4 (ERBB4). Also, it may be involved in a wide range of biological processes including inflammation, wound healing, oocyte maturation, and cell proliferation. Additionally, the encoded protein may promote the progression of cancers of various human tissues.