

Anti-CAP1 Picoband Antibody
Catalog # ABO12608**Specification**

Anti-CAP1 Picoband Antibody - Product Information

Application	WB
Primary Accession	Q01518
Host	Rabbit
Reactivity	Human, Mouse, Rat
Clonality	Polyclonal
Format	Lyophilized

Description

Rabbit IgG polyclonal antibody for Adenylyl cyclase-associated protein 1(CAP1) detection. Tested with WB in Human;Mouse;Rat.

Reconstitution

Add 0.2ml of distilled water will yield a concentration of 500ug/ml.

Anti-CAP1 Picoband Antibody - Additional Information

Gene ID 10487

Other Names

Adenylyl cyclase-associated protein 1, CAP 1, CAP1, CAP

Calculated MW

51901 MW KDa

Application Details

Western blot, 0.1-0.5 µg/ml, Human, Mouse, Rat

Subcellular Localization

Cell membrane ; Peripheral membrane protein .

Protein Name

Adenylyl cyclase-associated protein 1

Contents

Each vial contains 5mg BSA, 0.9mg NaCl, 0.2mg Na₂HPO₄, 0.05mg NaN₃.

Immunogen

E. coli-derived human CAP1 recombinant protein (Position: A2-R123). Human CAP1 shares 92.6% and 93.4% amino acid (aa) sequence identity with mouse and rat CAP1, respectively.

Purification

Immunogen affinity purified.

Cross Reactivity

No cross reactivity with other proteins

Storage

At -20°C for one year. After reconstitution, at 4°C for one month. It can also be aliquotted and stored frozen at -20°C for a longer time. Avoid repeated freezing and thawing.

Anti-CAP1 Picoband Antibody - Protein Information

Name CAP1

Synonyms CAP

Function

Directly regulates filament dynamics and has been implicated in a number of complex developmental and morphological processes, including mRNA localization and the establishment of cell polarity.

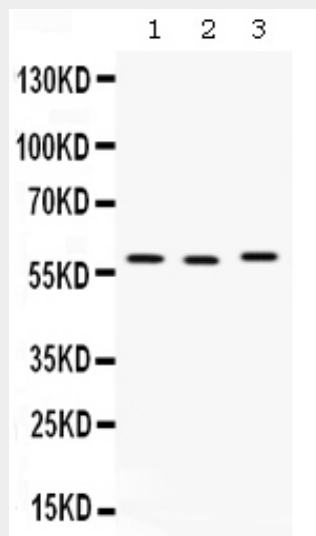
Cellular Location

Cell membrane; Peripheral membrane protein

Anti-CAP1 Picoband Antibody - Protocols

Provided below are standard protocols that you may find useful for product applications.

- [Western Blot](#)
- [Blocking Peptides](#)
- [Dot Blot](#)
- [Immunohistochemistry](#)
- [Immunofluorescence](#)
- [Immunoprecipitation](#)
- [Flow Cytometry](#)
- [Cell Culture](#)

Anti-CAP1 Picoband Antibody - Images

Western blot analysis of CAP1 expression in rat thymus extract (lane 1), rat spleen extract (lane

2) and SMMC7721 whole cell lysates (lane 3). CAP1 at 60KD was detected using rabbit anti-CAP1 Antigen Affinity purified polyclonal antibody (Catalog # ABO12608) at 0.5 µg/mL. The blot was developed using chemiluminescence (ECL) method .

Anti-CAP1 Picoband Antibody - Background

Adenylyl cyclase-associated protein 1 is an enzyme that in humans is encoded by the CAP1 gene. This gene is mapped to 1p34.2. The protein encoded by this gene is related to the *S. cerevisiae* CAP protein, which is involved in the cyclic AMP pathway. And the human protein is able to interact with other molecules of the same protein, as well as with CAP2 and actin. Alternatively spliced transcript variants have been identified.