

**Anti-CDCP1 Picoband Antibody**  
**Catalog # ABO12618****Specification**

---

**Anti-CDCP1 Picoband Antibody - Product Information**

Application	WB, IHC
Primary Accession	<a href="#">Q9H5V8</a>
Host	Rabbit
Reactivity	Human, Mouse, Rat
Clonality	Polyclonal
Format	Lyophilized

**Description**

Rabbit IgG polyclonal antibody for CUB domain-containing protein 1(CDCP1) detection. Tested with WB, IHC-P in Human;Mouse;Rat.

**Reconstitution**

Add 0.2ml of distilled water will yield a concentration of 500ug/ml.

**Anti-CDCP1 Picoband Antibody - Additional Information**

**Gene ID** 64866

**Other Names**

CUB domain-containing protein 1, Membrane glycoprotein gp140, Subtractive immunization M plus HEp3-associated 135 kDa protein, SIMA135, Transmembrane and associated with src kinases, CD318, CDCP1, TRASK

**Calculated MW**

92932 MW KDa

**Application Details**

Immunohistochemistry(Paraffin-embedded Section), 0.5-1 µg/ml, Human, Mouse, Rat, By Heat  
Western blot, 0.1-0.5 µg/ml, Human

**Subcellular Localization**

Isoform 1: Cell membrane ; Single-pass membrane protein . Shedding may also lead to a soluble peptide.

**Tissue Specificity**

Highly expressed in mitotic cells with low expression during interphase. Detected at highest levels in skeletal muscle and colon with lower levels in kidney, small intestine, placenta and lung. Up-regulated in a number of human tumor cell lines, as well as in colorectal cancer, breast carcinoma and lung cancer. Also expressed in cells with phenotypes reminiscent of mesenchymal stem cells and neural stem cells. .

**Protein Name**

CUB domain-containing protein 1

**Contents**

Each vial contains 5mg BSA, 0.9mg NaCl, 0.2mg Na<sub>2</sub>HPO<sub>4</sub>, 0.05mg NaN<sub>3</sub>.

**Immunogen**

E. coli-derived human CDCP1 recombinant protein (Position: R582-T667). Human CDCP1 shares 84.5% amino acid (aa) sequence identity with mouse CDCP1.

**Purification**

Immunogen affinity purified.

**Cross Reactivity**

No cross reactivity with other proteins

**Storage**

**At -20°C for one year. After reconstitution, at 4°C for one month. It can also be aliquotted and stored frozen at -20°C for a longer time. Avoid repeated freezing and thawing.**

**Anti-CDCP1 Picoband Antibody - Protein Information**

**Name** CDCP1

**Synonyms** TRASK

**Function**

May be involved in cell adhesion and cell matrix association. May play a role in the regulation of anchorage versus migration or proliferation versus differentiation via its phosphorylation. May be a novel marker for leukemia diagnosis and for immature hematopoietic stem cell subsets. Belongs to the tetraspanin web involved in tumor progression and metastasis.

**Cellular Location**

[Isoform 1]: Cell membrane; Single-pass membrane protein. Note=Shedding may also lead to a soluble peptide

**Tissue Location**

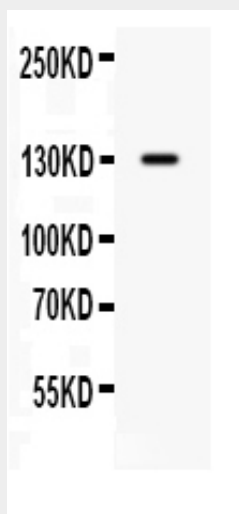
Highly expressed in mitotic cells with low expression during interphase. Detected at highest levels in skeletal muscle and colon with lower levels in kidney, small intestine, placenta and lung. Up-regulated in a number of human tumor cell lines, as well as in colorectal cancer, breast carcinoma and lung cancer. Also expressed in cells with phenotypes reminiscent of mesenchymal stem cells and neural stem cells.

**Anti-CDCP1 Picoband Antibody - Protocols**

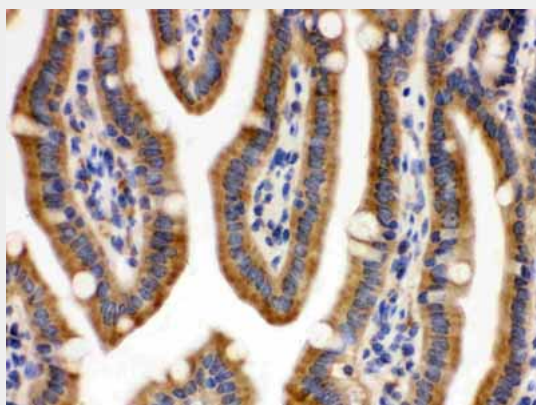
Provided below are standard protocols that you may find useful for product applications.

- [Western Blot](#)
- [Blocking Peptides](#)
- [Dot Blot](#)
- [Immunohistochemistry](#)
- [Immunofluorescence](#)
- [Immunoprecipitation](#)
- [Flow Cytometry](#)
- [Cell Culture](#)

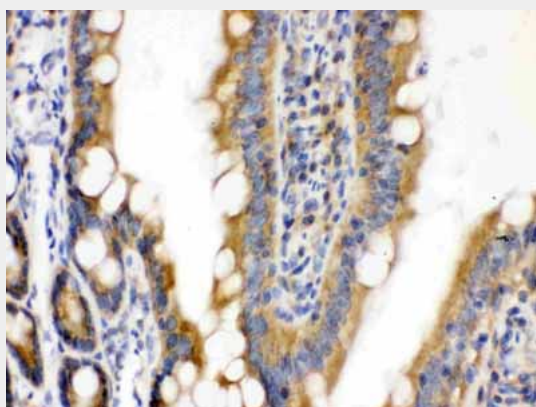
**Anti-CDCP1 Picoband Antibody - Images**



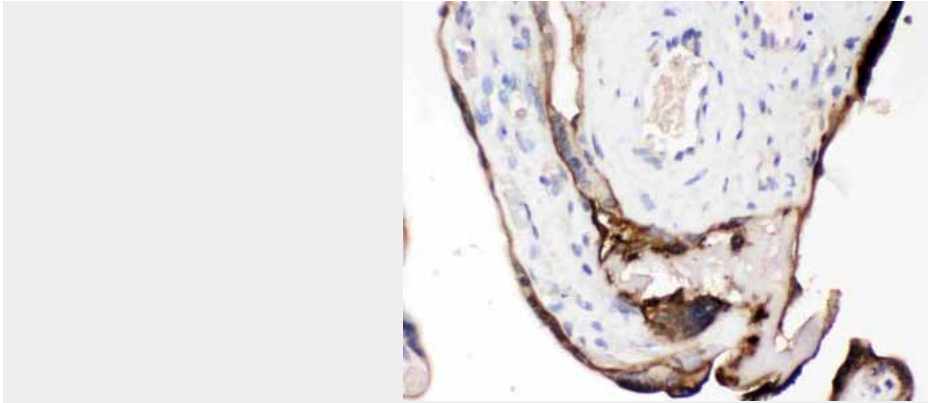
Western blot analysis of CDCP1 expression in SW620 whole cell lysates (lane 1). CDCP1 at 130KD was detected using rabbit anti-CDCP1 Antigen Affinity purified polyclonal antibody (Catalog # ABO12618) at 0.5 µg/mL. The blot was developed using chemiluminescence (ECL) method .



CDCP1 was detected in paraffin-embedded sections of mouse intestine tissues using rabbit anti-CDCP1 Antigen Affinity purified polyclonal antibody (Catalog # ABO12618) at 1 µg/mL. The immunohistochemical section was developed using SABC method .



CDCP1 was detected in paraffin-embedded sections of rat intestine tissues using rabbit anti-CDCP1 Antigen Affinity purified polyclonal antibody (Catalog # ABO12618) at 1 µg/mL. The immunohistochemical section was developed using SABC method .



CDCP1 was detected in paraffin-embedded sections of human placenta tissues using rabbit anti-CDCP1 Antigen Affinity purified polyclonal antibody (Catalog # ABO12618) at 1  $\mu$ g/mL. The immunohistochemical section was developed using SABC method .

#### **Anti-CDCP1 Picoband Antibody - Background**

CUB domain-containing protein 1 (CDCP1) is a protein that in humans is encoded by the CDCP1 gene. It has also been designated as CD318 (cluster of differentiation 318) and Trask (Transmembrane and associated with src kinases). CDCP1/Trask is a 140 kD transmembrane glycoprotein with a large extracellular domain (ECD) containing two CUB domains, and a smaller intracellular domain (ICD) containing five tyrosines. The tyrosine phosphorylation of Trask is tightly regulated and reciprocally linked with the state of cell adhesion. The tyrosine phosphorylation of CDCP1 in cultured cells occurs when cells are induced to detach by trypsin or EDTA, or seen spontaneously during mitotic detachment. The overexpression of CDCP1 leads to the loss of cell adhesion and a detached phenotype. CDCP1 is widely expressed in human epithelial tissues, but its phosphorylation is only seen in mitotically detached or shedding cells, consistent with its role in the negative regulation of cell adhesion.