

**Anti-Calcitonin Picoband Antibody**  
**Catalog # ABO12622****Specification**

---

**Anti-Calcitonin Picoband Antibody - Product Information**

Application	IHC
Primary Accession	<a href="#">Q99JA0</a>
Host	Rabbit
Reactivity	Mouse, Rat
Clonality	Polyclonal
Format	Lyophilized

**Description**

Rabbit IgG polyclonal antibody for Calcitonin gene-related peptide 1(CALCA) detection. Tested with IHC-P in Mouse;Rat.

**Reconstitution**

Add 0.2ml of distilled water will yield a concentration of 500ug/ml.

**Anti-Calcitonin Picoband Antibody - Additional Information**

**Gene ID** 12310

**Other Names**

Calcitonin gene-related peptide 1, Alpha-type CGRP, Calcitonin gene-related peptide I, CGRP-I, Calca, Calc

**Calculated MW**

14065 MW KDa

**Application Details**

Immunohistochemistry(Paraffin-embedded Section), 0.5-1 µg/ml, Mouse, Rat, By Heat<br> <br>

**Subcellular Localization**

Secreted.

**Tissue Specificity**

Detected in nerve cells of cerebrum, hippocampus and pons/midbrain in newborns, and only in nerve cells of pons/midbrain in adult. .

**Protein Name**

Calcitonin gene-related peptide 1

**Contents**

Each vial contains 4mg Trehalose, 0.9mg NaCl, 0.2mg Na2HPO4, 0.05mg NaN3.

**Immunogen**

A synthetic peptide corresponding to a sequence at the C-terminus of mouse Calcitonin (83-119aa SCNTATCVTHRLAGLLSRSGGVVKDNFVPTNVGSEAF), different from the related human sequence by four amino acids, and identical to the related rat sequence.

**Purification**

Immunogen affinity purified.

**Cross Reactivity**

No cross reactivity with other proteins

**Storage**

**At -20°C for one year. After reconstitution, at 4°C for one month. It can also be aliquotted and stored frozen at -20°C for a longer time. Avoid repeated freezing and thawing.**

**Anti-Calcitonin Picoband Antibody - Protein Information**

**Name** Calca

**Synonyms** Calc

**Function**

CGRP induces vasodilation. It dilates a variety of vessels including the coronary, cerebral and systemic vasculature. Its abundance in the CNS also points toward a neurotransmitter or neuromodulator role. It also elevates platelet cAMP (By similarity).

**Cellular Location**

Secreted.

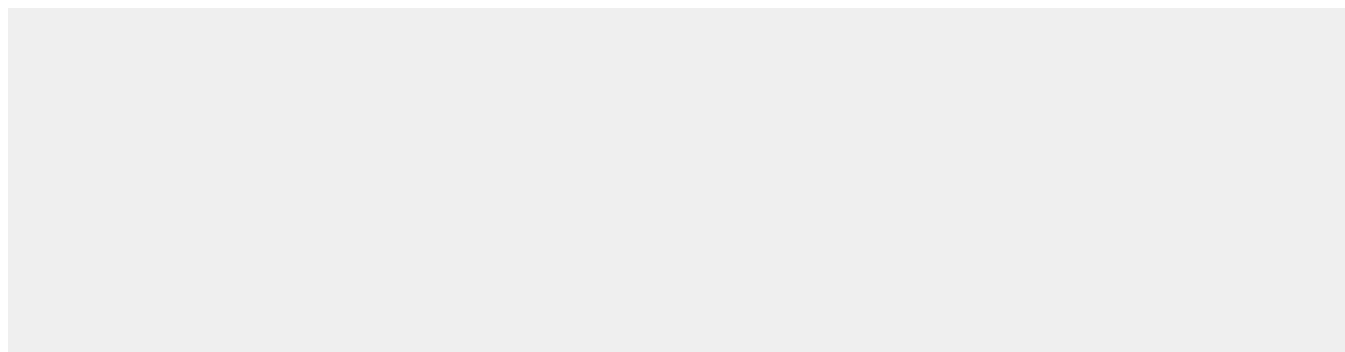
**Tissue Location**

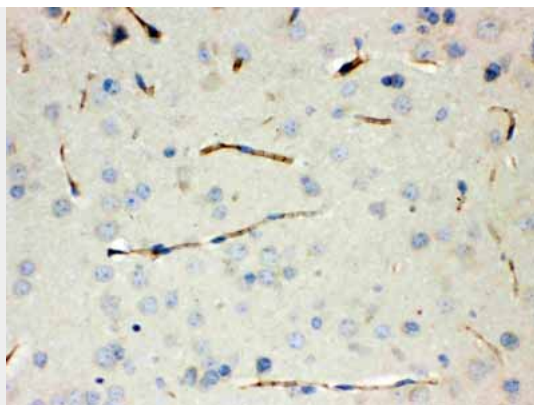
Detected in nerve cells of cerebrum, hippocampus and pons/midbrain in newborns, and only in nerve cells of pons/midbrain in adult.

**Anti-Calcitonin Picoband Antibody - Protocols**

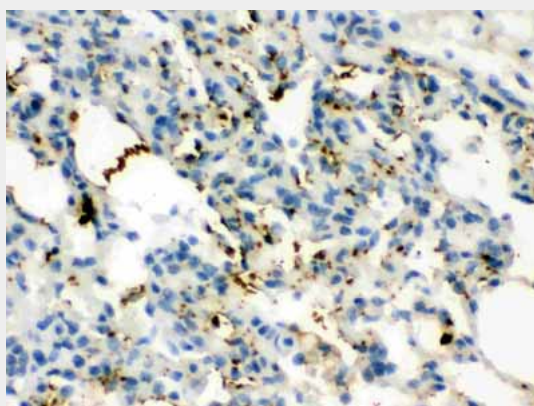
Provided below are standard protocols that you may find useful for product applications.

- [Western Blot](#)
- [Blocking Peptides](#)
- [Dot Blot](#)
- [Immunohistochemistry](#)
- [Immunofluorescence](#)
- [Immunoprecipitation](#)
- [Flow Cytometry](#)
- [Cell Culture](#)

**Anti-Calcitonin Picoband Antibody - Images**



Calcitonin was detected in paraffin-embedded sections of mouse lung tissues using rabbit anti-Calcitonin Antigen Affinity purified polyclonal antibody (Catalog # ABO12622) at 1 µg/mL. The immunohistochemical section was developed using SABC method .



Calcitonin was detected in paraffin-embedded sections of rat lung tissues using rabbit anti-Calcitonin Antigen Affinity purified polyclonal antibody (Catalog # ABO12622) at 1 µg/mL. The immunohistochemical section was developed using SABC method .

#### **Anti-Calcitonin Picoband Antibody - Background**

Calcitonin, also known as CALCA, is a peptide hormone synthesized by the parafollicular cells of the thyroid. It is mapped to 11p15.2. Calcitonin belongs to the calcitonin-like protein family. Calcitonin is involved in calcium regulation and acts to regulate phosphorus metabolism. Calcitonin gene-related peptide functions as a vasodilator and as an antimicrobial peptide while katalcalcin is a calcium-lowering peptide. Multiple transcript variants encoding different isoforms have been found for this gene.