

Anti-Elafin/PI3 Picoband Antibody
Catalog # ABO12642**Specification**

Anti-Elafin/PI3 Picoband Antibody - Product Information

Application	WB, IHC-P, E
Primary Accession	P19957
Host	Rabbit
Reactivity	Human
Clonality	Polyclonal
Format	Lyophilized

Description

Rabbit IgG polyclonal antibody for Elafin(PI3) detection. Tested with WB, IHC-P, ELISA in Human.

Reconstitution

Add 0.2ml of distilled water will yield a concentration of 500ug/ml.

Anti-Elafin/PI3 Picoband Antibody - Additional Information

Gene ID 5266

Other Names

Elafin, Elastase-specific inhibitor, ESI, Peptidase inhibitor 3, PI-3, Protease inhibitor WAP3, Skin-derived antileukoproteinase, SKALP, WAP four-disulfide core domain protein 14, PI3, WAP3, WFDC14

Calculated MW

12270 MW KDa

Application Details

Immunohistochemistry(Paraffin-embedded Section), 0.5-1 µg/ml, Human, By Heat

ELISA , 0.1-0.5 µg/ml, Human, -
Western blot, 0.1-0.5 µg/ml, Human

Subcellular Localization

Secreted.

Protein Name

Elafin

Contents

Each vial contains 5mg BSA, 0.9mg NaCl, 0.2mg Na₂HPO₄, 0.05mg NaN₃.

Immunogen

E. coli-derived human Elafin/Skalp recombinant protein (Position: A61-Q117).

Purification

Immunogen affinity purified.

Cross Reactivity

No cross reactivity with other proteins

Storage

At -20°C for one year. After reconstitution, at 4°C for one month. It can also be aliquotted and stored frozen at -20°C for a longer time. Avoid repeated freezing and thawing.

Anti-Elafin/PI3 Picoband Antibody - Protein Information

Name PI3

Synonyms WAP3, WFDC14

Function

Neutrophil and pancreatic elastase-specific inhibitor of skin. It may prevent elastase-mediated tissue proteolysis. Has been shown to inhibit the alpha-4-beta-2/CHRNA2-CHRNA2 nicotinic acetylcholine receptor and to produce a weak inhibition on Kv11.1/KCNH2/ERG1 and on the transient receptor potential cation channel subfamily V member 1 (TRPV1) (PubMed: [29483648](http://www.uniprot.org/citations/29483648)).

Cellular Location

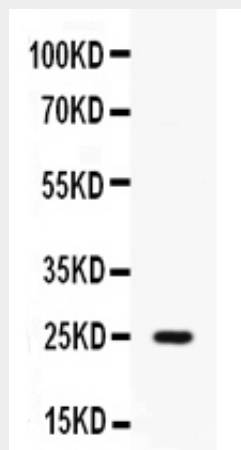
Secreted.

Anti-Elafin/PI3 Picoband Antibody - Protocols

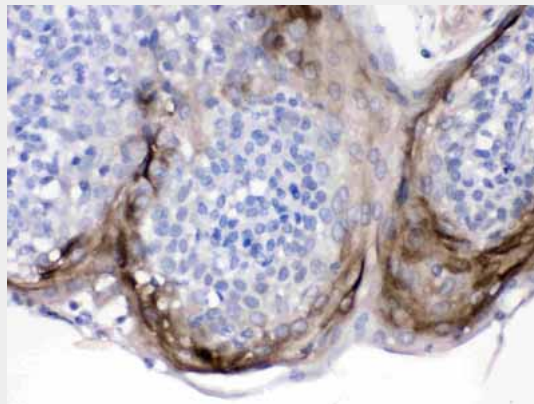
Provided below are standard protocols that you may find useful for product applications.

- [Western Blot](#)
- [Blocking Peptides](#)
- [Dot Blot](#)
- [Immunohistochemistry](#)
- [Immunofluorescence](#)
- [Immunoprecipitation](#)
- [Flow Cytometry](#)
- [Cell Culture](#)

Anti-Elafin/PI3 Picoband Antibody - Images



Western blot analysis of Elafin/Skalp expression in human placenta extract (lane 1). Elafin/Skalp at 25KD was detected using rabbit anti- Elafin/Skalp Antigen Affinity purified polyclonal antibody (Catalog # ABO12642) at 0.5 µg/mL. The blot was developed using chemiluminescence (ECL) method .



Elafin/Skalp was detected in paraffin-embedded sections of human tonsil tissues using rabbit anti-Elafin/Skalp Antigen Affinity purified polyclonal antibody (Catalog # ABO12642) at 1 µg/mL. The immunohistochemical section was developed using SABC method .

Anti-Elafin/PI3 Picoband Antibody - Background

Elafin, also known as peptidase inhibitor 3 or skin-derived antileukoprotease (SKALP), is a protein that in humans is encoded by the PI3 gene. This gene encodes an elastase-specific inhibitor that functions as an antimicrobial peptide against Gram-positive and Gram-negative bacteria, and fungal pathogens. The protein contains a WAP-type four-disulfide core (WFDC) domain, and is thus a member of the WFDC domain family. Most WFDC gene members are localized to chromosome 20q12-q13 in two clusters: centromeric and telomeric. And this gene belongs to the centromeric cluster. Expression of this gene is upregulated by bacterial lipopolysaccharides and cytokines.