

**Anti-Talin 2 Picoband Antibody**  
**Catalog # ABO12646****Specification**

---

**Anti-Talin 2 Picoband Antibody - Product Information**

Application	WB, IHC
Primary Accession	<a href="#">Q9Y4G6</a>
Host	Rabbit
Reactivity	Human, Mouse, Rat
Clonality	Polyclonal
Format	Lyophilized

**Description**

Rabbit IgG polyclonal antibody for Talin-2(TLN2) detection. Tested with WB, IHC-P in Human;Mouse;Rat.

**Reconstitution**

Add 0.2ml of distilled water will yield a concentration of 500ug/ml.

**Anti-Talin 2 Picoband Antibody - Additional Information**

**Gene ID** 83660

**Other Names**

Talin-2, TLN2, KIAA0320

**Calculated MW**

271613 MW KDa

**Application Details**

Immunohistochemistry(Paraffin-embedded Section), 0.5-1 µg/ml, Human, Mouse, Rat, By Heat  
Western blot, 0.1-0.5 µg/ml, Human, Mouse, Rat

**Subcellular Localization**

Cell junction, focal adhesion. Cell junction, synapse. Cell membrane; Peripheral membrane protein; Cytoplasmic side. Cytoplasm, cytoskeleton. Focal adhesion plaques and synapses.

**Protein Name**

Talin-2

**Contents**

Each vial contains 5mg BSA, 0.9mg NaCl, 0.2mg Na<sub>2</sub>HPO<sub>4</sub>, 0.05mg Na<sub>3</sub>.

**Immunogen**

A synthetic peptide corresponding to a sequence in the middle region of human Talin 2 (1787-1822aa NPKAQH<sub>2</sub>DAITEAAQLMKEAVDDIMVTLNEAA<sub>2</sub>SEV).

**Purification**

Immunogen affinity purified.

**Cross Reactivity**

No cross reactivity with other proteins

**Storage**

**At -20°C for one year. After r°Constitution, at 4°C for one month. It°Can also be aliquotted and stored frozen at -20°C for a longer time.Avoid repeated freezing and thawing.**

**Anti-Talin 2 Picoband Antibody - Protein Information**

**Name** TLN2

**Synonyms** KIAA0320

**Function**

As a major component of focal adhesion plaques that links integrin to the actin cytoskeleton, may play an important role in cell adhesion. Recruits PIP5K1C to focal adhesion plaques and strongly activates its kinase activity (By similarity).

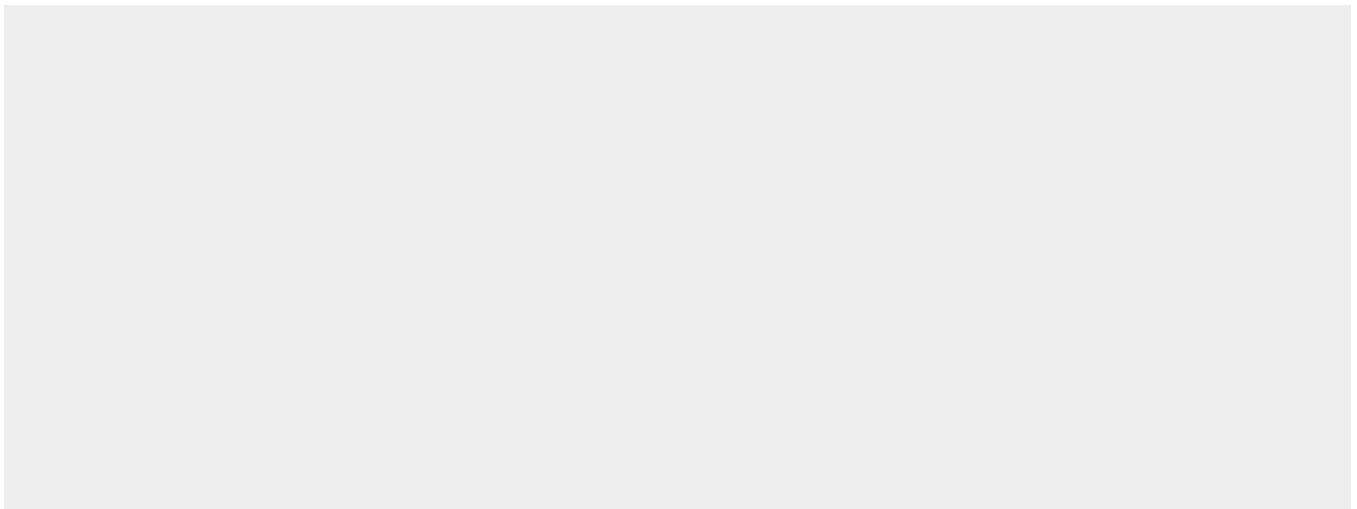
**Cellular Location**

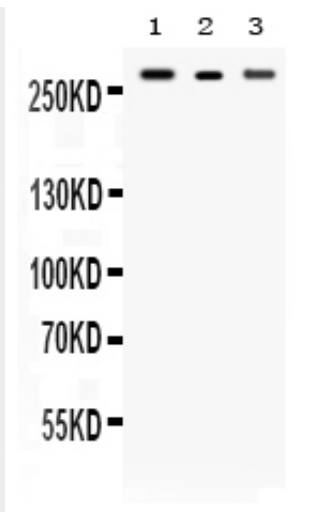
Cytoplasm. Cell junction, focal adhesion. Synapse. Cell membrane; Peripheral membrane protein; Cytoplasmic side. Cytoplasm, cytoskeleton. Note=Focal adhesion plaques and synapses (PubMed:12422219).

**Anti-Talin 2 Picoband Antibody - Protocols**

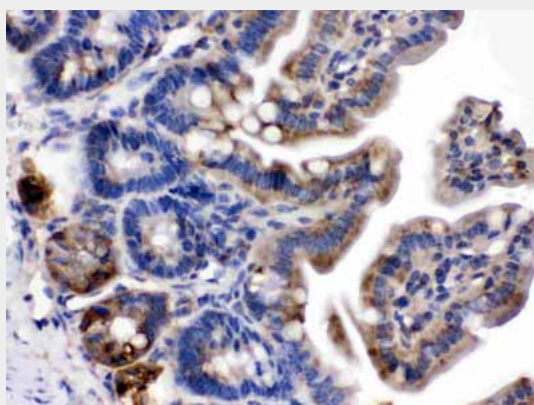
Provided below are standard protocols that you may find useful for product applications.

- [Western Blot](#)
- [Blocking Peptides](#)
- [Dot Blot](#)
- [Immunohistochemistry](#)
- [Immunofluorescence](#)
- [Immunoprecipitation](#)
- [Flow Cytometry](#)
- [Cell Culture](#)

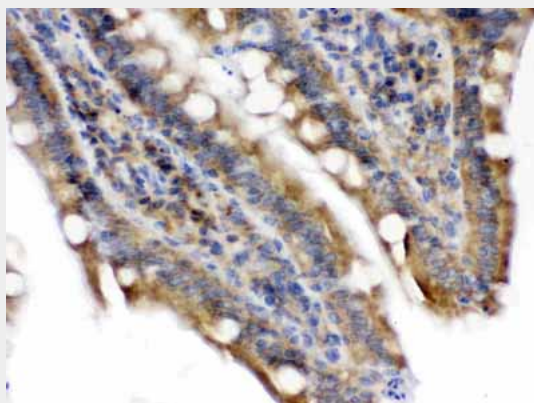
**Anti-Talin 2 Picoband Antibody - Images**



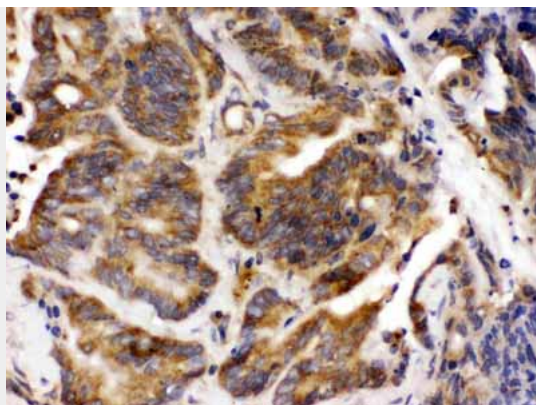
Western blot analysis of Talin 2 expression in rat brain extract (lane 1), mouse cardiac muscle extract (lane 2) and SMMC7721 whole cell lysates (lane 3). Talin 2 at 271KD was detected using rabbit anti-Talin 2 Antigen Affinity purified polyclonal antibody (Catalog # ABO12646) at 0.5  $\mu$ g/mL. The blot was developed using chemiluminescence (ECL) method .



Talin 2 was detected in paraffin-embedded sections of mouse intestine tissues using rabbit anti-Talin 2 Antigen Affinity purified polyclonal antibody (Catalog # ABO12646) at 1  $\mu$ g/mL. The immunohistochemical section was developed using SABC method .



Talin 2 was detected in paraffin-embedded sections of rat intestine tissues using rabbit anti-Talin 2 Antigen Affinity purified polyclonal antibody (Catalog # ABO12646) at 1  $\mu$ g/mL. The immunohistochemical section was developed using SABC method .



Talin 2 was detected in paraffin-embedded sections of human intestinal cancer tissues using rabbit anti- Talin 2 Antigen Affinity purified polyclonal antibody (Catalog # ABO12646) at 1  $\mu$ g/mL. The immunohistochemical section was developed using SABC method .

#### **Anti-Talin 2 Picoband Antibody - Background**

Talin 2 is a protein in humans that is encoded by the TLN2 gene. It belongs to the talin protein family. This gene encodes a protein related to talin 1, a cytoskeletal protein that plays a significant role in the assembly of actin filaments and in spreading and migration of various cell types, including fibroblasts and osteoclasts. Talin-2 is expressed at high levels in cardiac muscle and functions to provide linkages between the extracellular matrix and actin cytoskeleton at costamere structures to transduce force laterally.